



Rabbit anti SARS-CoV2(N) polyclonal antibody

Alternative Name(s): nan

Order Information

- **Description:** SARS-CoV2(N1)
- **Catalogue:** 630-940
- **Lot:** See label
- **Size:** 100ug/200ul
- **Host:** Rabbit
- **Clone:** nan
- **Application:** IHC(P)
- **Reactivity:** Hu, Ms, Rt,

ANTIGEN PREPARATION

A synthetic peptide derived from C-terminus of SARS-COV-2 N (nucleocapsid) protein

BACKGROUND

The SARS-CoV-2 nucleocapsid (N) is a 45 kDa protein, one of the major structural proteins of the virus. It binds directly to viral RNA and provides stability. N-protein is involved in the transcription and viral RNA replication, packaging of the encapsidated genome into helical ribonucleocapsid, and interference with cell cycle processes of host cells. This most abundant protein of coronavirus is composed of two structural domains and a linker region. N-protein contains two independent RNA binding domains, the N-terminal RNA binding domain and a C-terminal domain, which can interact with the viral RNA to form the ribonucleoprotein. The linker region binds to the M protein. The N-protein is a highly immunogenic phosphoprotein and is extremely conserved. This protein is a repressor of RNA interference and an antagonist of interferon.

PURIFICATION

The Rabbit IgG is purified by Epitope Affinity Purification

FORMULATION

This affinity purified antibody is supplied in sterile Phosphatebuffered saline (pH7.2) containing antibody stabilizer

SPECIFICITY

This antibody recognizes SARS-CoV2(N1) N protein.

STORAGE

The antibodies are stable for 24 months from date of receipt when stored at -20°C to -70°C . The antibodies can be stored at 2°C - 8°C for three month without detectable loss of activity. Avoid repeated freezing-thawing cycles.

APPLICATIONS/SUGGESTED WORKING DILUTIONS*

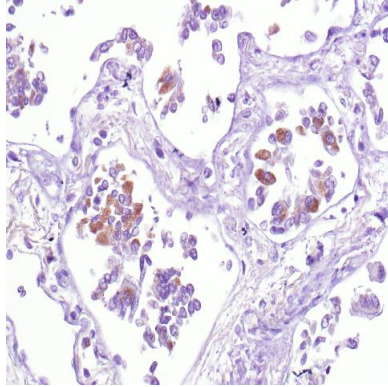
- Western Blot: 0.1-1 $\mu\text{g/ml}$
- ELISA: 0.01-0.1 $\mu\text{g/ml}$
- Immunoprecipitation: 2-5 $\mu\text{g/ml}$
- IHC: 2-10 $\mu\text{g/ml}$
- Flow cytometry: Not tested
- Molecular Weight: 114.0
- Positive Control: Kidney Tissue
- Cellular Location: Cell Membrane

*Optimal dilutions should be determined by researchers for the specific applications.

FOR RESEARCH USE ONLY.

AbboMax, Inc 2528 Qume Drive, Suite 8, San Jose, California 95131, USA
1 408-573-1898 (Tel). 1 408-573-1858 (Fax). www.abbomax.com info@abbomax.com

DATA ATTACHMENTS



Immunohistochemistry: Human infected lung tissue (FFPE) stained with Rabbit anti-Sars-Cov2 (N protein)(Cat# 630-940) at 1:200 for 10 min @ RT. Staining of formalin-fixed tissue requires boiling tissue sections in 10 mM Citrate Buffer, pH 6.0 for 10 min followed by cooling at RT for 20 min. The infected bronchial ciliated epithelial cells are positive.

REFERENCES

FOR RESEARCH USE ONLY.