



## Rabbit anti L1CAM(pS1152) Polyclonal Antibody

Alternative Name(s): L1 cell adhesion molecule; CD171

### Order Information

- **Description:** L1CAM(pS1152)
- **Catalogue:** 630-210
- **Lot:** See label
- **Size:** 100ug/200ul
- **Host:** Rabbit
- **Clone:** nan
- **Application:** IHC(P), WB
- **Reactivity:** Hu, Rt, Ms, Bv, Ck, Dg

### ANTIGEN PREPARATION

A synthetic peptide containing the epitope GKY-pS\*-VKEK at the phosphorylation site Serine 1152. This sequence is identical to human, mouse, and rat.

### BACKGROUND

L1 cell adhesion molecule (L1CAM) glycoprotein protein belongs to the immunoglobulin supergene family of cell adhesion molecules (CAM). It consists of several immunoglobulin-like domains and fibronectin-like repeats (type III), is linked via a single transmembrane sequence to a conserved cytoplasmic domain. This cell adhesion molecule plays an important role in nervous system development, including neuronal migration and differentiation. Mutations in the gene cause X-linked neurological syndromes known as CRASH (corpus callosum hypoplasia, retardation, aphasia, spastic paraplegia and hydrocephalus). Phosphorylation of L1CAM is involved in nervous system function.

### PURIFICATION

The Rabbit IgG is purified by site-modified Epitope Affinity Purification.

### FORMULATION

This affinity purified antibody is supplied in sterile Tris-buffered saline (pH7.2) containing antibody stabilizer

### SPECIFICITY

This antibody recognizes human L1CAM(pS1152) protein with a phosphorylation site pSer1152. It cross reacts to human, mice and rat.

### STORAGE

The antibodies are stable for 24 months from date of receipt when stored at -20oC to -70oC. The antibodies can be stored at 2oC-8oC for three month without detectable loss of activity. Avoid repeated freezing-thawing cycles.

### APPLICATIONS/SUGGESTED WORKING DILUTIONS\*

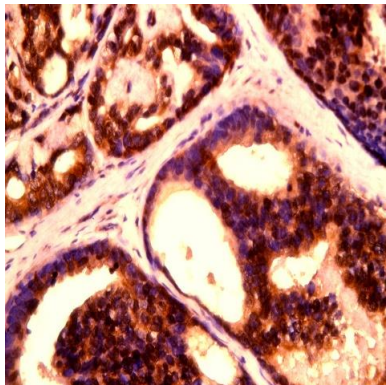
- Western Blot: 0.1-1 µg/ml
- ELISA: 0.01-0.1 µg/ml
- Immunoprecipitation: 2-5 µg/ml
- IHC: 2-10 µg/ml
- Flow cytometry: Not tested
- Molecular Weight: 220.0
- Positive Control: Kidney Tissue
- Cellular Location: Cell Membrane

\*Optimal dilutions should be determined by researchers for the specific applications.

### FOR RESEARCH USE ONLY.

AbboMax, Inc 2528 Qume Drive, Suite 8, San Jose, California 95131, USA  
1 408-573-1898 (Tel). 1 408-573-1858 (Fax). [www.abbomax.com](http://www.abbomax.com) [info@abbomax.com](mailto:info@abbomax.com)

## DATA ATTACHMENTS



Immunohistochemistry: Mouse kidney tissue (FFPE) stained with Rabbit anti-L1CAM (pS1152) (Cat# 630-210) at 1:200 for 10 min @ RT. Staining of formalin-fixed tissue requires boiling tissue sections in 10 mM Citrate Buffer, pH 6.0 for 10 min followed by cooling at RT for 20 min.

## REFERENCES

### FOR RESEARCH USE ONLY.

AbboMax, Inc 2528 Qume Drive, Suite 8, San Jose, California 95131, USA  
1 408-573-1898 (Tel). 1 408-573-1858 (Fax). [www.abbomax.com](http://www.abbomax.com) [info@abbomax.com](mailto:info@abbomax.com)