



Rabbit anti c-Fos(pThr232) Polyclonal Antibody

Alternative Name(s): p55; c-FOS; AP-1

Order Information

- **Description:** c-Fos(pThr232)
- **Catalogue:** 620-760
- **Lot:** See label
- **Size:** 100ug/200ul
- **Host:** Rabbit
- **Clone:** nan
- **Application:** IHC(P), WB
- **Reactivity:** Hu, Ms, Rt

ANTIGEN PREPARATION

A synthetic peptide corresponding to --EAS T* PES-- of c-Fos protein at the phosphorylation site at Thr 232. This sequence is identical in human, mouse, rat.

BACKGROUND

The c-Fos proto-oncogene, an 55 kDa nuclear phosphor-protein, belongs to a family of transcription factors. It consists of 4 members: Fos, FosB, FosL1, and FosL2. These genes encode leucine zipper proteins that can dimerize with proteins of the JUN family, thereby forming the transcription factor complex AP1. As such, the Fos proteins have been implicated as regulators of cell proliferation, differentiation, and transformation. In some cases, expression of the Fos gene has also been associated with apoptotic cell death. The phosphorylation of c-Fos at Threonine 232 was critical in regulating cell proliferation and differentiation.

PURIFICATION

The Rabbit IgG is purified by site-modified Epitope Affinity Purification.

FORMULATION

This affinity purified antibody is supplied in sterile Tris-buffered saline (pH7.2) containing antibody stabilizer

SPECIFICITY

This antibody recognizes c-Fos(pThr232) with a phosphorylation site Threonine 232 of human c-Fos protein. It does not recognize the non-phosphorylated c-Fos or other phosphorylation sites.

STORAGE

The antibodies are stable for 24 months from date of receipt when stored at -20oC to -70oC. The antibodies can be stored at 2oC-8oC for three month without detectable loss of activity. Avoid repeated freezing-thawing cycles.

APPLICATIONS/SUGGESTED WORKING DILUTIONS*

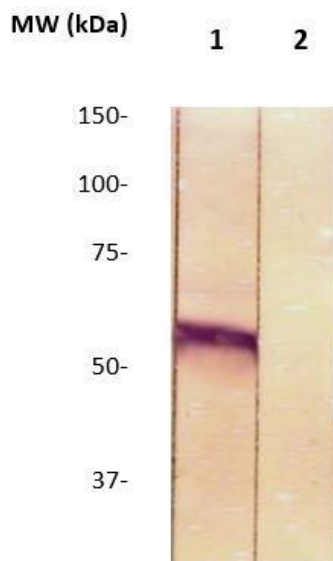
- Western Blot: 0.1-1 µg/ml
- ELISA: 0.01-0.1 µg/ml
- Immunoprecipitation: 2-5 µg/ml
- IHC: 2-10 µg/ml
- Flow cytometry: Not tested
- Molecular Weight: 55.0
- Positive Control: Kidney Tissue
- Cellular Location: Cell Membrane

*Optimal dilutions should be determined by researchers for the specific applications.

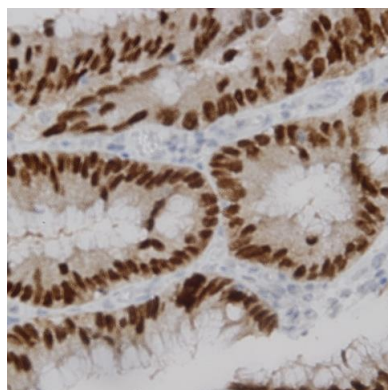
FOR RESEARCH USE ONLY.

AbboMax, Inc 2528 Qume Drive, Suite 8, San Jose, California 95131, USA
1 408-573-1898 (Tel). 1 408-573-1858 (Fax). www.abbomax.com info@abbomax.com

DATA ATTACHMENTS



Western Blot: Cell lysate from A431 (lane1) was resolved onto 10% SDS-PAGE and transferred onto NC Membrane, then probed by Anti-c-Fos (pT232) antibody, (Cat# 620-760) at 1:500. An immune-reactive band around 55-kDa is observed. The lane two was immuno-preabsorbed by immunizing peptide.



Immunohistochemistry: Human colon carcinoma (FFPE) stained with Rabbit anti-c-Fos (pT232) (Cat# 620-760) at 1:200 for 10 min @ RT. Staining of formalin-fixed tissue requires boiling tissue sections in 10 mM Citrate Buffer, pH 6.0 for 10 min followed by cooling at RT for 20 min.

REFERENCES

Wang,Z.Q., Ovitt,C., Grigoriadis,A.E., Mohle-Steinlein,U., Ruther,U. and Wagner,E.F. Bone and haematopoietic defects in mice lacking c-fos. Nature 360 (6406), 741-745 (1992).

FOR RESEARCH USE ONLY.

AbboMax, Inc 2528 Qume Drive, Suite 8, San Jose, California 95131, USA
1 408-573-1898 (Tel). 1 408-573-1858 (Fax). www.abbomax.com info@abbomax.com