



Rabbit anti PLAC1(Hu) Polyclonal Antibody

Alternative Name(s): placenta-specific 1

Order Information

- **Description:** PLAC1(Hu)
- **Catalogue:** 620-390
- **Lot:** See label
- **Size:** 100ug/200ul
- **Host:** Rabbit
- **Clone:** nan
- **Application:** IHC(P), WB
- **Reactivity:** Hu

ANTIGEN PREPARATION

A synthetic peptide corresponding to the internal sequence of human Placenta-specific 1 protein (180-200aa and 160- 180aa). This sequence is derived from human origin.

BACKGROUND

The PLAC1, a placenta-specific gene, which encodes a putative cell surface protein, is highly expressed in placenta, testis, cancer cell lines and lung tumors. PLAC1 is exclusively expressed by cells of trophoblastic lineage in the mouse, and maps to a region of the X-chromosome known to be important in placenta growth. PLAC1 is also expressed in human hepatocellular cancer tissues as well as in several other types of cancer tissues and/or tumor cell lines. PLAC1 represents a new class of tumor associated antigen with restricted expression in placenta and cancer tissues, that may serve as a target for cancer vaccination.

PURIFICATION

The Rabbit IgG is purified by Epitope Affinity Purification

FORMULATION

This affinity purified antibody is supplied in sterile Phosphatebuffered saline (pH7.2) containing antibody stabilizer

SPECIFICITY

This antibody recognizes ~22 kDa of PLAC1 protein. It cross-reacts to human, not the other species.

STORAGE

The antibodies are stable for 24 months from date of receipt when stored at -20oC to -70oC. The antibodies can be stored at 2oC-8oC for three month without detectable loss of activity. Avoid repeated freezing-thawing cycles.

APPLICATIONS/SUGGESTED WORKING DILUTIONS*

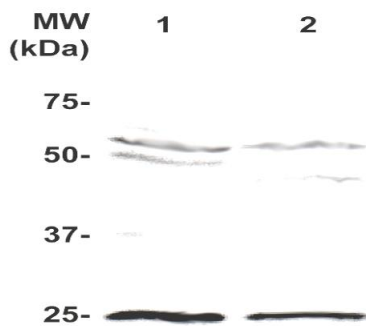
- Western Blot: 0.1-1 µg/ml
- ELISA: 0.01-0.1 µg/ml
- Immunoprecipitation: 2-5 µg/ml
- IHC: 2-10 µg/ml
- Flow cytometry: Not tested
- Molecular Weight: 36.0
- Positive Control: Kidney Tissue
- Cellular Location: Cell Membrane

*Optimal dilutions should be determined by researchers for the specific applications.

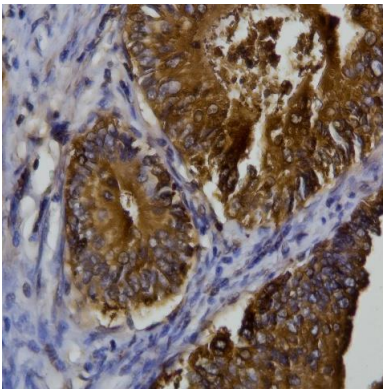
FOR RESEARCH USE ONLY.

AbboMax, Inc 2528 Qume Drive, Suite 8, San Jose, California 95131, USA
1 408-573-1898 (Tel). 1 408-573-1858 (Fax). www.abbomax.com info@abbomax.com

DATA ATTACHMENTS



Western Blot: The cell lysate derived HepG2 (lane 1) and MCF-7 (Lane 2) were separated in 12% SDS-PAGE, transferred onto NC membrane, and immunoblotted by Rabbit anti PLAC1 (Cat#620-390) at 1:500. An immunoreactive major band was observed at ~22 kDa.



Immunohistochemistry: Human Colon Carcinoma tissue (FFPE) stained with Rabbit Anti-PLAC1 antibody (Cat# 620-390) at 1:200 for 10 min @ RT. Staining of formalin-fixed tissue requires boiling tissue sections in 10 mM Citrate Buffer, pH 6.0 for 10 min followed by cooling at RT for 20 min.

REFERENCES

FOR RESEARCH USE ONLY.