



Mouse anti CD23 Monoclonal Antibody

Alternative Name(s): nan

Order Information

- **Description:** CD23
- **Catalogue:** 605-290
- **Lot:** See label
- **Size:** 100ug/200ul
- **Host:** Mouse
- **Clone:** EBVCS-5
- **Application:** IHC(P), FC
- **Reactivity:** Hu

ANTIGEN PREPARATION

A recombinant protein of human CD23

BACKGROUND

CD23 protein is a B-cell specific antigen, and a low-affinity receptor for IgE. It has essential roles in B cell growth and differentiation, and the regulation of IgE production. This protein also exists as a soluble secreted form, then functioning as a potent mitogenic growth factor. It is involved in allergy and resistance to parasites. There are two forms of CD23: CD23a and CD23b. CD23a is constitutively expressed on B cells and follicular dendritic cells (FDC), but not on dendritic cells. The CD23b isoform has been found on enterocytes in the intestine and recently also on lung epithelial cells. Flow cytometric analysis of CD23 expression in CD5-positive B-cells is a widely applied method in the differential diagnosis of chronic lymphocytic leukaemia (CLL) and mantle cell lymphoma (MCL).

PURIFICATION

The mouse IgG is purified by Protein A-Affinity Chromatography according to Isotyping

FORMULATION

This affinity purified antibody is supplied in sterile Phosphatebuffered saline (pH7.2) containing antibody stabilizer

SPECIFICITY

This antibody recognizes human CD23 protein. The other species are not tested.

STORAGE

The antibodies are stable for 24 months from date of receipt when stored at -20°C to -70°C . The antibodies can be stored at 2°C - 8°C for three month without detectable loss of activity. Avoid repeated freezing-thawing cycles.

APPLICATIONS/SUGGESTED WORKING DILUTIONS*

- Western Blot: 0.1-1 $\mu\text{g}/\text{ml}$
- ELISA: 0.01-0.1 $\mu\text{g}/\text{ml}$
- Immunoprecipitation: 2-5 $\mu\text{g}/\text{ml}$
- IHC: 2-10 $\mu\text{g}/\text{ml}$
- Flow cytometry: 0.5-5 $\mu\text{g}/10^6$ cells
- Molecular Weight: 8.0
- Positive Control: Kidney Tissue
- Cellular Location: Cell Membrane

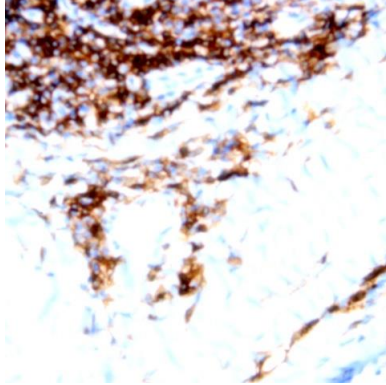
*Optimal dilutions should be determined by researchers for the specific applications.

FOR RESEARCH USE ONLY.

AbboMax, Inc 2528 Qume Drive, Suite 8, San Jose, California 95131, USA
1 408-573-1898 (Tel). 1 408-573-1858 (Fax). www.abbomax.com info@abbomax.com



DATA ATTACHMENTS



Immunohistochemistry: Human lymph node (FFPE) stained with Mouse anti-CD23 (Cat# 605-290) at 1:200 for 10 min @ RT. Staining of formalin-fixed tissue requires boiling tissue sections in 10 mM Citrate Buffer, pH 6.0 for 10 min followed by cooling at RT for 20 min.

REFERENCES

FOR RESEARCH USE ONLY.

AbboMax, Inc 2528 Qume Drive, Suite 8, San Jose, California 95131, USA
1 408-573-1898 (Tel). 1 408-573-1858 (Fax). www.abbomax.com info@abbomax.com