



Mouse anti CD15 Monoclonal Antibody

Alternative Name(s): Blood Group Antigen Lewis X (LeX); CD15; SSEA-1; ELFT; FCT3A; FUT-IV; SSEA-1

Order Information

- **Description:** CD15/SSEA-1
- **Catalogue:** 604-590
- **Lot:** See label
- **Size:** 100ug/200ul
- **Host:** Mouse
- **Clone:** MMA
- **Application:** IHC(P), FC
- **Reactivity:** Hu

ANTIGEN PREPARATION

A recombinant protein of human CD15

BACKGROUND

SSEA-1/CD15 is a stage-specific embryonic antigen 1 which presents on myelomonocytic cells and Lacto-Nfucopentose III (also known as hapten X). It is present on greater than 90% of granulocytes including neutrophils and eosinophils, and to a lesser degree, on monocytes. CD15 is expressed in Reed-Sternberg cells of Hodgkin's disease (of the nodular sclerosis, mixed cellularity and lymphocyte-depleted subtypes). This antibody recognizes myeloid cells, mainly granulocytes but not on B cells, T cells, monocytes, erythrocytes or platelets. Positive staining for CD15 combined with a negative reaction for lymphocytic markers may provide support for Hodgkin's disease. Fifty percent or more of adenocarcinomas have been described as showing significant cytoplasmic positivity for CD15. It does not detect most mesotheliomas

PURIFICATION

The mouse IgG is purified by Protein A-Affinity Chromatography according to Isotyping

FORMULATION

This affinity purified antibody is supplied in sterile Phosphatebuffered saline (pH7.2) containing antibody stabilizer

SPECIFICITY

This antibody recognizes human CD15/SSEA-1 protein. The other species are not tested.

STORAGE

The antibodies are stable for 24 months from date of receipt when stored at -20oC to -70oC. The antibodies can be stored at 2oC-8oC for three month without detectable loss of activity. Avoid repeated freezing-thawing cycles.

APPLICATIONS/SUGGESTED WORKING DILUTIONS*

- Western Blot: 0.1-1 µg/ml
- ELISA: 0.01-0.1 µg/ml
- Immunoprecipitation: 2-5 µg/ml
- IHC: 2-10 µg/ml
- Flow cytometry: 0.5-5 µg/106 cells
- Molecular Weight: 33-43
- Positive Control: Kidney Tissue
- Cellular Location: Cell Membrane

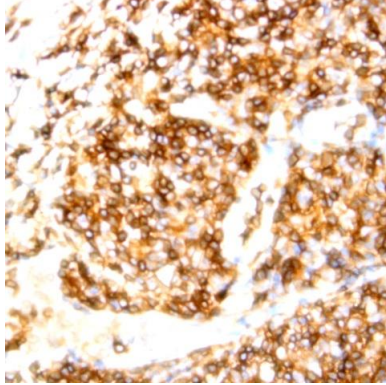
*Optimal dilutions should be determined by researchers for the specific applications.

FOR RESEARCH USE ONLY.

AbboMax, Inc 2528 Qume Drive, Suite 8, San Jose, California 95131, USA
1 408-573-1898 (Tel). 1 408-573-1858 (Fax). www.abbomax.com info@abbomax.com



DATA ATTACHMENTS



Immunohistochemistry: Human Tonsil (FFPE) stained with Mouse anti-CD15 (Cat# 604-590) at 1:200 for 10 min @ RT. Staining of formalin-fixed tissue requires boiling tissue sections in 10 mM Citrate Buffer, pH 6.0 for 10 min followed by cooling at RT for 20 min.

REFERENCES

Wu W, et al. 2017. Sci Rep. 7:44481

FOR RESEARCH USE ONLY.

AbboMax, Inc 2528 Qume Drive, Suite 8, San Jose, California 95131, USA
1 408-573-1898 (Tel). 1 408-573-1858 (Fax). www.abbomax.com info@abbomax.com