



## Rabbit anti CCR1 Polyclonal Antibody

**Alternative Name(s):** CD191, Chemokine (C-C motif) receptor 1; CKR1; CKR-1; HM145; CMKBR1; MIP1aR; SCYAR1

### Order Information

- **Description:** CCR1
- **Catalogue:** 602-440
- **Lot:** See label
- **Size:** 100ug/200ul
- **Host:** Rabbit
- **Clone:** nan
- **Application:** IHC(P), WB
- **Reactivity:** Hu

### **ANTIGEN PREPARATION**

A synthetic peptide of human CCR1

### **BACKGROUND**

CCR1, also known CD191, is a 41 kD belonging to of the beta chemokine receptor family, which is predicted to be a seven transmembrane protein similar to G protein-coupled receptors. The ligands of this receptor include macrophage inflammatory protein 1 alpha (MIP-1 alpha), regulated on activation normal T expressed and secreted protein (RANTES), monocyte chemoattractant protein 3 (MCP-3), and myeloid progenitor inhibitory factor-1 (MPIF-1). Chemokines and their receptors mediated signal transduction are critical for the recruitment of effector immune cells to the site of inflammation. CCR1 is also expressed by a subset of T cells and eosinophils. CCR1 positive cells can migrate in response to a CCL3 and CCL5 gradient. CCR1 knock-out studies suggest that this molecule plays an important role in inflammation and susceptibility to viruses and parasites.

### **PURIFICATION**

The Rabbit IgG is purified by Epitope Affinity Purification

### **FORMULATION**

This affinity purified antibody is supplied in sterile Phosphatebuffered saline (pH7.2) containing antibody stabilizer

### **SPECIFICITY**

This antibody recognizes human CCR1 protein. The other species are not tested.

### **STORAGE**

The antibodies are stable for 24 months from date of receipt when stored at  $-20^{\circ}\text{C}$  to  $-70^{\circ}\text{C}$ . The antibodies can be stored at  $2^{\circ}\text{C}$ - $8^{\circ}\text{C}$  for three month without detectable loss of activity. Avoid repeated freezing-thawing cycles.

### **APPLICATIONS/SUGGESTED WORKING DILUTIONS\***

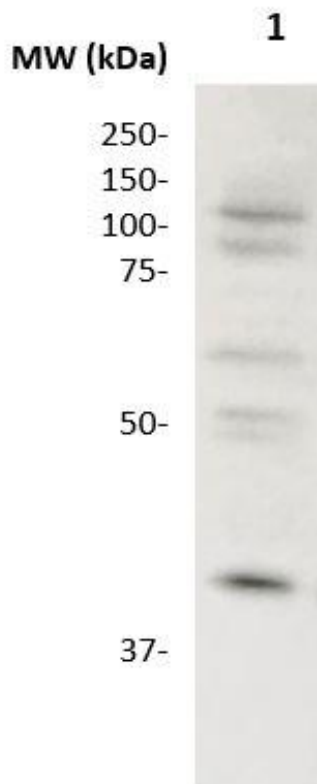
- Western Blot: 0.1-1  $\mu\text{g/ml}$
- ELISA: 0.01-0.1  $\mu\text{g/ml}$
- Immunoprecipitation: 2-5  $\mu\text{g/ml}$
- IHC: 2-10  $\mu\text{g/ml}$
- Flow cytometry: Not tested
- Molecular Weight: 41.0
- Positive Control: Kidney Tissue
- Cellular Location: Cell Membrane

\*Optimal dilutions should be determined by researchers for the specific applications.

### **FOR RESEARCH USE ONLY.**

AbboMax, Inc 2528 Qume Drive, Suite 8, San Jose, California 95131, USA  
1 408-573-1898 (Tel). 1 408-573-1858 (Fax). [www.abbomax.com](http://www.abbomax.com) [info@abbomax.com](mailto:info@abbomax.com)

**DATA ATTACHMENTS**



Western Blot: The whole lysate derived from K562 (20 ug/lane) immunoblotted by Rabbit anti – CCR1 (Cat# 602-440) at 1:500. Observed a major immunoreactive band at molecular weight ~41 kDa.

**REFERENCES**

**FOR RESEARCH USE ONLY.**