



Rabbit anti CDC2 Polyclonal Antibody

Alternative Name(s): Cyclin-Dependent Kinase 1; CDK1

Order Information

- **Description:** CDC2
- **Catalogue:** 602-180
- **Lot:** See label
- **Size:** 100ug/200ul
- **Host:** Rabbit
- **Clone:** nan
- **Application:** IHC(P), WB
- **Reactivity:** Hu, Ck, Bv

ANTIGEN PREPARATION

A synthetic peptide corresponding to the C-terminus of CDC2 protein from human, rat and mouse origins.

BACKGROUND

Cyclins and cyclin-dependent kinases (CDKs) control cell cycle progression by phosphorylating regulatory proteins. These cyclin-related proteins appear to affect cell structure and function independent of the cell cycle. Cyclins and CDKs have a role in the development and maintenance of cell- and tissue-restricted properties of differentiated cells. CDC2 (Cell Division Cycle 2), also known as CDK1 (Cyclin Dependent kinase 1), is a member of the CDK family of serine/threonine kinases. It is a highly conserved serine protein kinase that plays a key role in regulation of the cell cycle. The phosphorylation of CDC2 at Y15 and T14 during the G2 phase of the cell cycle inhibits CDC2 activity, while the dephosphorylation of Y15 and T14 by CDC25 phosphatase during the late G2 restores its activity.

PURIFICATION

The Rabbit IgG is purified by Epitope Affinity Purification

FORMULATION

This affinity purified antibody is supplied in sterile Phosphatebuffered saline (pH7.2) containing antibody stabilizer

SPECIFICITY

This antibody recognizes human, rat and mouse CDC2 protein. The other species are not tested.

STORAGE

The antibodies are stable for 24 months from date of receipt when stored at -20°C to -70°C . The antibodies can be stored at 2°C - 8°C for three month without detectable loss of activity. Avoid repeated freezing-thawing cycles.

APPLICATIONS/SUGGESTED WORKING DILUTIONS*

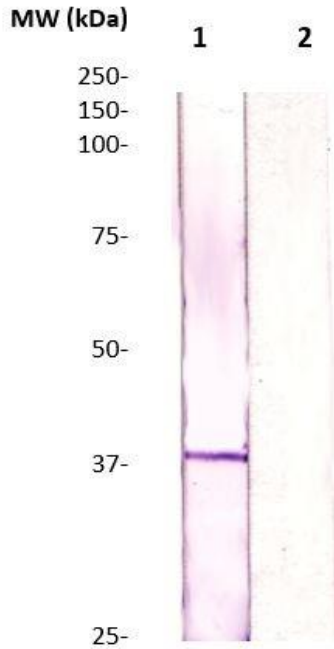
- Western Blot: 0.1-1 $\mu\text{g/ml}$
- ELISA: 0.01-0.1 $\mu\text{g/ml}$
- Immunoprecipitation: 2-5 $\mu\text{g/ml}$
- IHC: 2-10 $\mu\text{g/ml}$
- Flow cytometry: Not tested
- Molecular Weight: 32.0
- Positive Control: Kidney Tissue
- Cellular Location: Cell Membrane

*Optimal dilutions should be determined by researchers for the specific applications.

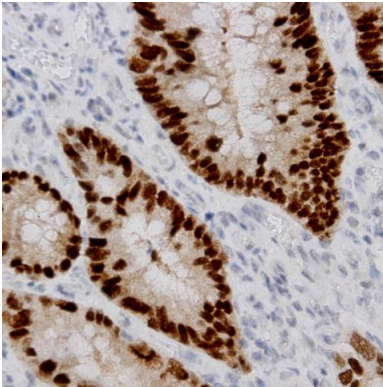
FOR RESEARCH USE ONLY.

AbboMax, Inc 2528 Qume Drive, Suite 8, San Jose, California 95131, USA
1 408-573-1898 (Tel). 1 408-573-1858 (Fax). www.abbomax.com info@abbomax.com

DATA ATTACHMENTS



Western Blot: The A431 cell lysate resolved onto 12% SDS-PAGE, transferred onto NC membrane, and followed by an immunoblotting with Rabbit anti CDC2 (CT) (Cat#602-180) antibody (Lane 1) at 1:500, or with a pre-incubation of immunizing peptide (lane 2). Observed a major immunoreactive band at molecular weight ~38 kDa.



Immunohistochemistry: Human Breast carcinoma (FFPE) stained with Rabbit anti-CDC2 (CT) (Cat# 602-180) at 1:200 for 10 min @ RT. Staining of formalin-fixed tissue requires boiling tissue sections in 10 mM Citrate Buffer, pH 6.0 for 10 min followed by cooling at RT for 20 min.

REFERENCES

FOR RESEARCH USE ONLY.