



## Rabbit anti CD136 (RON) (pY1238/1239) Polyclonal Antibody

Alternative Name(s): Macrophage stimulating 1 receptor; CD136; RON

### Order Information

- **Description:** CD136 (RON) (pY1238/1239)
- **Catalogue:** 601-900
- **Lot:** See label
- **Size:** 100ug/200ul
- **Host:** Rabbit
- **Clone:** nan
- **Application:** IHC(P), WB
- **Reactivity:** Hu

### **ANTIGEN PREPARATION**

A synthetic peptide containing the epitope -EPYYS- with a dually phosphorylation sites Y1238/9 of the human CD136.

### **BACKGROUND**

CD136, a transmembrane receptor tyrosine kinase, also known as Macrophage stimulating 1 receptor (MST1R) and RON (Recepteur d'origine nantais), is a member of the MET proto-oncogene family (63% homology), and is the receptor for macrophage-stimulating protein (MSP), a multifunctional cytokine that regulates cell adhesion, motility, growth, and survival. Binding of MSP to CD136 stimulates tyrosine phosphorylation on Tyr 1238 and Tyr 1239. This phosphorylation leads to a up-regulation of CD136 catalytic activity and subsequent activation of downstream signaling molecules. In addition, CD136 contains putative autophosphorylation sites on Tyr 1353 and Tyr 1360. RON mediates multiple signaling cascades, such as MAPK, PI3K/AKT, FAK pathways. CD136 activation can also significantly increase C-Src activity. CD136 is a disulfide-linked 180kD heterodimer composed of a 35kD alpha chain and a 150kD beta chain, and is mainly expressed in cells of epithelial origin. CD136 is thought to play a role in early embryonic development and in the inflammatory response as well as implicated in the progression and metastasis of tumors including those of the breast and colon.

### **PURIFICATION**

The Rabbit IgG is purified by site-modified Epitope Affinity Purification.

### **FORMULATION**

This affinity purified antibody is supplied in sterile Tris-buffered saline (pH7.2) containing antibody stabilizer

### **SPECIFICITY**

This antibody recognizes ~185 kDa of human CD136 protein. It also reacts with mouse and rat. The other species are not tested.

### **STORAGE**

The antibodies are stable for 24 months from date of receipt when stored at -20oC to -70oC. The antibodies can be stored at 2oC-8oC for three month without detectable loss of activity. Avoid repeated freezing-thawing cycles.

### **APPLICATIONS/SUGGESTED WORKING DILUTIONS\***

- Western Blot: 0.1-1 µg/ml
- ELISA: 0.01-0.1 µg/ml
- Immunoprecipitation: 2-5 µg/ml
- IHC: 2-10 µg/ml
- Flow cytometry: Not tested
- Molecular Weight: 185.0
- Positive Control: Kidney Tissue

### **FOR RESEARCH USE ONLY.**

AbboMax, Inc 2528 Qume Drive, Suite 8, San Jose, California 95131, USA  
1 408-573-1898 (Tel). 1 408-573-1858 (Fax). [www.abbomax.com](http://www.abbomax.com) [info@abbomax.com](mailto:info@abbomax.com)



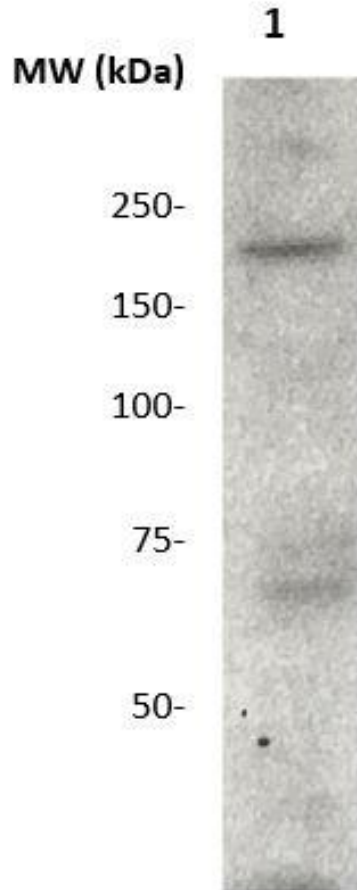
- Cellular Location: Cell Membrane

\*Optimal dilutions should be determined by researchers for the specific applications.

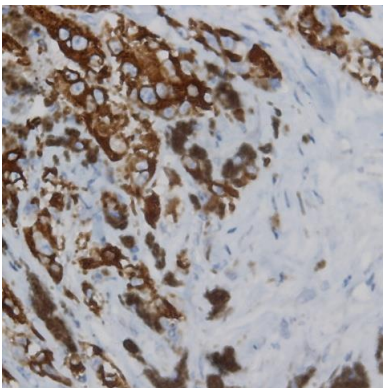
**FOR RESEARCH USE ONLY.**

AbboMax, Inc 2528 Qume Drive, Suite 8, San Jose, California 95131, USA  
1 408-573-1898 (Tel). 1 408-573-1858 (Fax). [www.abbomax.com](http://www.abbomax.com) [info@abbomax.com](mailto:info@abbomax.com)

**DATA ATTACHMENTS**



Western Blot: The cell lysate derived from MSP-treated CD136 transfected HEK293 (20 ug/lane) were immunoprobed by Rabbit anti-CD136(pY1238/Y1239) (Cat#601-900) at 1:500. An immunoreactive band is observed around ~185kDa.



Immunohistochemistry: Human lymphoma (FFPE) stained with Rabbit anti-CD136 (pY1238/pY1239) antibody (Cat#601-900) at 1:200 for 10 min @ RT. Staining of formalin-fixed tissue requires boiling tissue sections in 10 mM Citrate Buffer, pH 6.0 for 10 min followed by cooling at RT for 20 min.

**REFERENCES**

**FOR RESEARCH USE ONLY.**