



Rabbit anti MMP-26 Polyclonal Antibody

Alternative Name(s): Matrix metalloproteinase 26

Order Information

- **Description:** MMP-26
- **Catalogue:** 601-380
- **Lot:** See label
- **Size:** 100ug/200ul
- **Host:** Rabbit
- **Clone:** nan
- **Application:** IHC(P), WB
- **Reactivity:** Hu

ANTIGEN PREPARATION

A synthetic peptide corresponding to internal segment of human MMP-26

BACKGROUND

Proteins of the matrix metalloproteinase (MMP) family are involved in the breakdown of extracellular matrix in normal physiological processes, such as embryonic development, reproduction, and tissue remodeling, as well as in disease processes, such as arthritis and metastasis. Most MMP's are secreted as inactive proproteins which are activated when cleaved by extracellular proteinases. It is thought that the protein encoded by this gene is cleaved at both ends to yield the active enzyme, but this processing has not been fully described. The enzyme degrades soluble and insoluble elastin. MMP-26 (matrix metalloproteinase-26), also known as Endometase or Matrilysin-2, is a 261 amino acid metalloproteinase that is secreted as an inactive protein and is activated upon cleavage by extracellular proteinases. Expressed specifically in the placenta and uterus, MMP-26 hydrolyzes (and subsequently degrades) a variety of proteins such as Fibrinogen, Fibronectin, Vitronectin and collagen type IV (COL4). MMP-26 binds zinc and calcium as cofactors and, unlike other MMP family members, lacks a conserved C-terminal domain. MMP-26 is widely expressed in a number of malignant tumor lines where it is thought to play an important role in tissue remodeling events that are associated with carcinogenesis.

PURIFICATION

The Rabbit IgG is purified by Epitope Affinity Purification

FORMULATION

This affinity purified antibody is supplied in sterile Phosphatebuffered saline (pH7.2) containing antibody stabilizer

SPECIFICITY

This antibody recognizes human MMP-26 protein. The other species are not tested.

STORAGE

The antibodies are stable for 24 months from date of receipt when stored at -20oC to -70oC. The antibodies can be stored at 2oC-8oC for three month without detectable loss of activity. Avoid repeated freezing-thawing cycles.

APPLICATIONS/SUGGESTED WORKING DILUTIONS*

- Western Blot: 0.1-1 µg/ml
- ELISA: 0.01-0.1 µg/ml
- Immunoprecipitation: 2-5 µg/ml
- IHC: 2-10 µg/ml
- Flow cytometry: Not tested
- Molecular Weight: 30.0
- Positive Control: Kidney Tissue
- Cellular Location: Cell Membrane

FOR RESEARCH USE ONLY.

AbboMax, Inc 2528 Qume Drive, Suite 8, San Jose, California 95131, USA
1 408-573-1898 (Tel). 1 408-573-1858 (Fax). www.abbomax.com info@abbomax.com

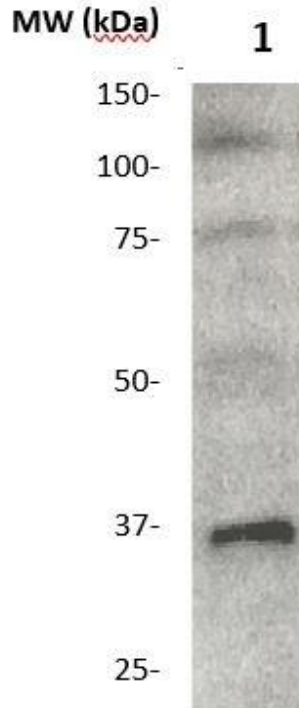


*Optimal dilutions should be determined by researchers for the specific applications.

FOR RESEARCH USE ONLY.

AbboMax, Inc 2528 Qume Drive, Suite 8, San Jose, California 95131, USA
1 408-573-1898 (Tel). 1 408-573-1858 (Fax). www.abbomax.com info@abbomax.com

DATA ATTACHMENTS



Western Blot: The whole lysate derived from HT29 (20 ug/lane) immunoblotted by Rabbit anti – MMP-26 (Cat# 601-380) at 1:500. Observed a major immunoreactive band at molecular weight ~30 kDa.

REFERENCES

FOR RESEARCH USE ONLY.