



## Rabbit anti MMP-24/MT5-MMP Polyclonal Antibody

Alternative Name(s):

MMP25; MMP-24; MT5MMP; MTMMP5; MT-MMP5; MT5-MMP; MT-MMP 5

### Order Information

- **Description:** MMP-24/MT5-MMP
- **Catalogue:** 601-370
- **Lot:** See label
- **Size:** 100ug/200ul
- **Host:** Rabbit
- **Clone:** nan
- **Application:** IHC(P), WB
- **Reactivity:** Hu

### ANTIGEN PREPARATION

A synthetic peptide corresponding to C-term of human MMP-24

### BACKGROUND

Proteins of the matrix metalloproteinase (MMP) family are involved in the breakdown of extracellular matrix in normal physiological processes, such as embryonic development, reproduction, and tissue remodeling, as well as in disease processes, such as arthritis and metastasis. Most MMP's are secreted as inactive proproteins which are activated when cleaved by extracellular proteinases. It is thought that the protein encoded by this gene is cleaved at both ends to yield the active enzyme, but this processing has not been fully described. The enzyme degrades soluble and insoluble elastin. MMP25 has been renamed matrix metalloproteinase 24 (MMP24)

### PURIFICATION

The Rabbit IgG is purified by Epitope Affinity Purification

### FORMULATION

This affinity purified antibody is supplied in sterile Phosphatebuffered saline (pH7.2) containing antibody stabilizer

### SPECIFICITY

This antibody recognizes human MMP-24/MT5-MMP protein. The other species are not tested.

### STORAGE

The antibodies are stable for 24 months from date of receipt when stored at  $-20^{\circ}\text{C}$  to  $-70^{\circ}\text{C}$ . The antibodies can be stored at  $2^{\circ}\text{C}$ - $8^{\circ}\text{C}$  for three month without detectable loss of activity. Avoid repeated freezing-thawing cycles.

### APPLICATIONS/SUGGESTED WORKING DILUTIONS\*

- Western Blot: 0.1-1  $\mu\text{g}/\text{ml}$
- ELISA: 0.01-0.1  $\mu\text{g}/\text{ml}$
- Immunoprecipitation: 2-5  $\mu\text{g}/\text{ml}$
- IHC: 2-10  $\mu\text{g}/\text{ml}$
- Flow cytometry: Not tested
- Molecular Weight: 55.0
- Positive Control: Kidney Tissue
- Cellular Location: Cell Membrane

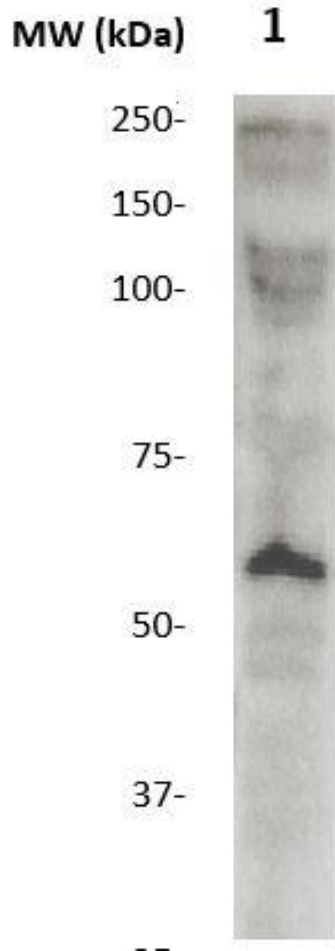
\*Optimal dilutions should be determined by researchers for the specific applications.

### FOR RESEARCH USE ONLY.

AbboMax, Inc 2528 Qume Drive, Suite 8, San Jose, California 95131, USA  
1 408-573-1898 (Tel). 1 408-573-1858 (Fax). [www.abbomax.com](http://www.abbomax.com) [info@abbomax.com](mailto:info@abbomax.com)

**DATA ATTACHMENTS**

Western Blot: The whole lysate derived from HT29 (20 ug/lane) immunoblotted by Rabbit anti – MMP-24 (Cat#601-370) at 1:500. Observed a major immunoreactive band at molecular weight ~55 kDa.



**REFERENCES**

**FOR RESEARCH USE ONLY.**