



Rabbit anti S6K(pS434) Polyclonal Antibody

Alternative Name(s): ribosomal protein S6 kinase; S6K; p70-S6K

Order Information

- **Description:** S6K(pS434)
- **Catalogue:** 601-030
- **Lot:** See label
- **Size:** 100ug/200ul
- **Host:** Rabbit
- **Clone:** nan
- **Application:** IHC(P), WB
- **Reactivity:** Hu, Ms, Rt

ANTIGEN PREPARATION

A synthetic peptide corresponding to the epitope –IRSPR- at a phosphorylation site at serine 434 of human p70S6K protein. This sequence is identical within human, rat, mouse, bovine, chicken and dog.

BACKGROUND

S6 kinase, or p70 S6 Kinase, a mitogen activated Ser/Thr protein kinase, is required for cell growth and G1 cell cycle progression. P70 S6 Kinase and single 4E-BP are phosphorylated via the insulin and target of rapamycin (TOR) signaling pathway which is independent of PI3K and AKT activity. On the other hand, the oncogenic transformation by P3k and Akt is dependent on targets that control translation: transforming activity, which is correlated with phosphorylation and activation of S6K and eliminated by the mTOR inhibitor rapamycin. S6K phosphorylates the S6 protein of the 40S ribosomal subunit.

PURIFICATION

The Rabbit IgG is purified by site-modified Epitope Affinity Purification.

FORMULATION

This affinity purified antibody is supplied in sterile Tris-buffered saline (pH7.2) containing antibody stabilizer

SPECIFICITY

This antibody recognizes ~70 kDa of human p70S6K protein. It does not recognize non-phosphorylated peptides. This antibody also reacts with mouse and rat. The other species are not tested.

STORAGE

The antibodies are stable for 24 months from date of receipt when stored at –20oC to –70oC. The antibodies can be stored at 2oC-8oC for three month without detectable loss of activity. Avoid repeated freezing-thawing cycles.

APPLICATIONS/SUGGESTED WORKING DILUTIONS*

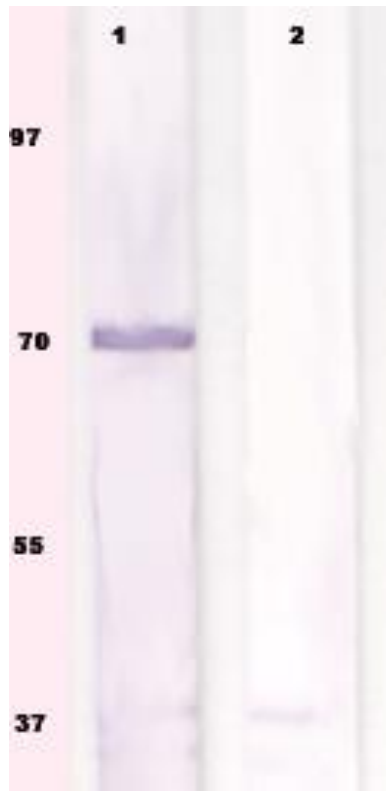
- Western Blot: 0.1-1 µg/ml
- ELISA: 0.01-0.1 µg/ml
- Immunoprecipitation: 2-5 µg/ml
- IHC: 2-10 µg/ml
- Flow cytometry: Not tested
- Molecular Weight: 70.0
- Positive Control: Kidney Tissue
- Cellular Location: Cell Membrane

*Optimal dilutions should be determined by researchers for the specific applications.

FOR RESEARCH USE ONLY.

AbboMax, Inc 2528 Qume Drive, Suite 8, San Jose, California 95131, USA
1 408-573-1898 (Tel). 1 408-573-1858 (Fax). www.abbomax.com info@abbomax.com

DATA ATTACHMENTS



Western Blot: The cell lysate derived from conditioned 3T3 cells was immunoprobed by Rabbit anti-p70S6K (pS434) (Cat#601-030) at 1:500. An immunoreactive band is observed around ~70kDa.

REFERENCES

FOR RESEARCH USE ONLY.