



## Rabbit anti GSK3a(pS21) Polyclonal Antibody

Alternative Name(s): Glycogen Synthase Kinase 3a; GSK3A;

### Order Information

- **Description:** GSK3a(pS21)
- **Catalogue:** 600-330
- **Lot:** See label
- **Size:** 100ug/200ul
- **Host:** Rabbit
- **Clone:** nan
- **Application:** IHC(P), WB
- **Reactivity:** Hu, Ms, Rt

### ANTIGEN PREPARATION

A synthetic peptide surrounding to the epitope -RTSSFA- with a phosphorylation site at Ser21 of human GSK3-alpha protein. This sequence is identical among human, mouse and rat.

### BACKGROUND

Glycogen Synthase Kinase-3 has two isoforms, GSK-3 $\alpha$  and GSK3 $\beta$ . GSK3 is a serine/threonine kinase that affects glycogen metabolism by phosphorylating and down-regulating the activity of muscle glycogen synthase as well as the regulation in Wnt signal pathway. GSK-3 alpha reduces the substrates beta-catenin and tau to imply an important role in Wnt signaling and tauopathies such as Alzheimer's disease..

### PURIFICATION

The Rabbit IgG is purified by site-modified Epitope Affinity Purification.

### FORMULATION

This affinity purified antibody is supplied in sterile Tris-buffered saline (pH7.2) containing antibody stabilizer

### SPECIFICITY

This antibody recognizes GSK-3 alpha (pS21) with a phosphorylated site at Serine 9. It does not cross-react with non-phosphospecific peptide.

### STORAGE

The antibodies are stable for 24 months from date of receipt when stored at -20oC to -70oC. The antibodies can be stored at 2oC-8oC for three month without detectable loss of activity. Avoid repeated freezing-thawing cycles.

### APPLICATIONS/SUGGESTED WORKING DILUTIONS\*

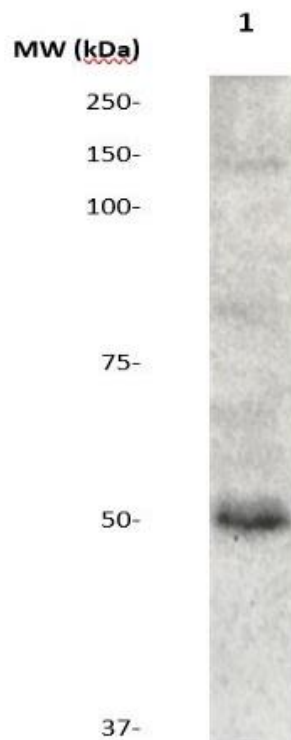
- Western Blot: 0.1-1  $\mu$ g/ml
- ELISA: 0.01-0.1  $\mu$ g/ml
- Immunoprecipitation: 2-5  $\mu$ g/ml
- IHC: 2-10  $\mu$ g/ml
- Flow cytometry: Not tested
- Molecular Weight: 52.0
- Positive Control: Kidney Tissue
- Cellular Location: Cell Membrane

\*Optimal dilutions should be determined by researchers for the specific applications.

### FOR RESEARCH USE ONLY.

AbboMax, Inc 2528 Qume Drive, Suite 8, San Jose, California 95131, USA  
1 408-573-1898 (Tel). 1 408-573-1858 (Fax). [www.abbomax.com](http://www.abbomax.com) [info@abbomax.com](mailto:info@abbomax.com)

## DATA ATTACHMENTS



Western Blot: The 3T3 cell lysate derived from conditioned culture medium was resolved onto 10% SDS-PAGE, transferred onto NC membrane, and followed by an immunoblotting with Rabbit anti GSK-3 alpha (pS21) (Cat#600-330) antibody at 1:500. Observed a major immunoreactive band at molecular weight ~52 kDa.

## REFERENCES

### FOR RESEARCH USE ONLY.

AbboMax, Inc 2528 Qume Drive, Suite 8, San Jose, California 95131, USA  
1 408-573-1898 (Tel). 1 408-573-1858 (Fax). [www.abbomax.com](http://www.abbomax.com) [info@abbomax.com](mailto:info@abbomax.com)