



Rabbit anti CD8 Polyclonal Antibody

Alternative Name(s): CD8 antigen

Order Information

- **Description:** CD8
- **Catalogue:** 500-2484
- **Lot:** See label
- **Size:** 100ug/200ul
- **Host:** Rabbit
- **Clone:** nan
- **Application:** IHC(P)
- **Reactivity:** Hu

ANTIGEN PREPARATION

A synthetic peptide corresponding to C-terminus of human CD8 protein.

BACKGROUND

The CD8 antigen, also known as T8 or Leu2 or Lyt2 or T cell coreceptor, is a cell surface glycoprotein as a dimer with a molecular mass of 32 kD. It is found on most cytotoxic T lymphocytes that mediates efficient cell-cell interactions within the immune system. The CD8 antigen acts as a coreceptor with the T-cell receptor on the T lymphocyte to recognize antigens displayed by an antigen presenting cell in the context of class I MHC molecules. The T8 antigen is expressed by the suppressor/cytotoxic subset of T lymphocytes which comprise most of the cortical thymocytes and approximately 30% of peripheral blood T cells. Studies have demonstrated that increased levels of T8+ cells are associated with viral infections such as hepatitis B, Epstein-Barr, and cytomegalovirus. This antibody may be used in the study of cell-mediated cytotoxicity and that of immunoregulation and T-lymphocyte-mediated suppression. This antibody stains CD8 (T8) antigen suppressor/cytotoxic T lymphocytes and majority of thymocytes (approximately 80%) in frozen tissue sections.

PURIFICATION

The Rabbit IgG is purified by Epitope Affinity Purification

FORMULATION

This affinity purified antibody is supplied in sterile Phosphatebuffered saline (pH7.2) containing antibody stabilizer

SPECIFICITY

This antibody recognizes human CD8. The other species not tested.

STORAGE

The antibodies are stable for 24 months from date of receipt when stored at -20oC to -70oC. The antibodies can be stored at 2oC-8oC for three month without detectable loss of activity. Avoid repeated freezing-thawing cycles.

APPLICATIONS/SUGGESTED WORKING DILUTIONS*

- Western Blot: 0.1-1 µg/ml
- ELISA: 0.01-0.1 µg/ml
- Immunoprecipitation: 2-5 µg/ml
- IHC: 2-10 µg/ml
- Flow cytometry: Not tested
- Molecular Weight: 32.0
- Positive Control: Kidney Tissue
- Cellular Location: Cell Membrane

FOR RESEARCH USE ONLY.

AbboMax, Inc 2528 Qume Drive, Suite 8, San Jose, California 95131, USA
1 408-573-1898 (Tel). 1 408-573-1858 (Fax). www.abbomax.com info@abbomax.com



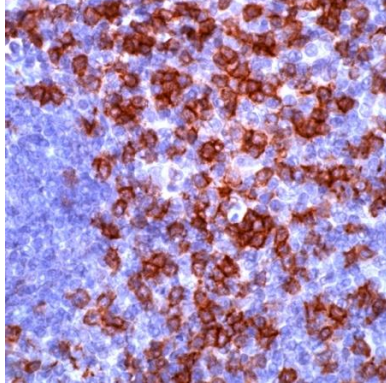
*Optimal dilutions should be determined by researchers for the specific applications.

FOR RESEARCH USE ONLY.

AbboMax, Inc 2528 Qume Drive, Suite 8, San Jose, California 95131, USA
1 408-573-1898 (Tel). 1 408-573-1858 (Fax). www.abbomax.com info@abbomax.com



DATA ATTACHMENTS



Immunohistochemistry: Human tonsil tissue (FFPE) stained with Rabbit anti-CD8 (Cat# 500-2484) antibody at 1:100 for 10 min @ RT. Staining of formalin-fixed tissue requires boiling tissue sections in 10 mM Citrate Buffer, pH 6.0 for 10 min followed by cooling at RT for 20 min.

REFERENCES

FOR RESEARCH USE ONLY.

AbboMax, Inc 2528 Qume Drive, Suite 8, San Jose, California 95131, USA
1 408-573-1898 (Tel). 1 408-573-1858 (Fax). www.abbomax.com info@abbomax.com