



Rabbit anti IgG Polyclonal Antibody

Alternative Name(s): Immunoglobulin Type G

Order Information

- **Description:** IgG
- **Catalogue:** 500-1754
- **Lot:** See label
- **Size:** 100ug/200ul
- **Host:** Rabbit
- **Clone:** nan
- **Application:** IHC(P), ELISA
- **Reactivity:** Hu

ANTIGEN PREPARATION

Immunoglobulin G

BACKGROUND

IgG is a monomeric immunoglobulin. It is the most abundant immunoglobulin and is found in the blood and extracellular fluid. There are four subclasses of IgG: IgG-1, IgG-2, IgG-3 and IgG-4. IgG is composed of two heavy (γ) chains and two light (κ or λ) chains. The chains form two domains, the Fab (antigen binding) fragment and the Fc (constant) fragment. Each IgG Fab fragment has two antigen binding sites. IgG molecules are involved in secondary immune response. They bind to several different kinds of pathogens, such as viruses, bacteria and fungi, and protect the body by complement activation (the classic pathway), opsonization for phagocytosis, and neutralization of toxins. In addition, IgG is the only isotype that can pass through the placenta, thereby providing protection to the fetus in the first weeks of life, before immune system of the fetus has developed.

PURIFICATION

The Rabbit IgG is purified by Epitope Affinity Purification

FORMULATION

This affinity purified antibody is supplied in sterile Phosphatebuffered saline (pH7.2) containing antibody stabilizer

SPECIFICITY

This antibody recognizes human Igg. The other species not tested.

STORAGE

The antibodies are stable for 24 months from date of receipt when stored at -20°C to -70°C . The antibodies can be stored at 2°C - 8°C for three month without detectable loss of activity. Avoid repeated freezing-thawing cycles.

APPLICATIONS/SUGGESTED WORKING DILUTIONS*

- Western Blot: 0.1-1 $\mu\text{g/ml}$
- ELISA: 0.01-0.1 $\mu\text{g/ml}$
- Immunoprecipitation: 2-5 $\mu\text{g/ml}$
- IHC: 2-10 $\mu\text{g/ml}$
- Flow cytometry: Not tested
- Molecular Weight: 146.0
- Positive Control: Kidney Tissue
- Cellular Location: Cell Membrane

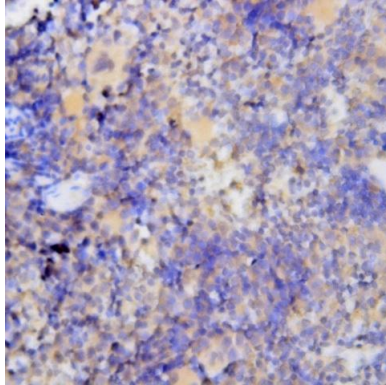
*Optimal dilutions should be determined by researchers for the specific applications.

FOR RESEARCH USE ONLY.

AbboMax, Inc 2528 Qume Drive, Suite 8, San Jose, California 95131, USA
1 408-573-1898 (Tel). 1 408-573-1858 (Fax). www.abbomax.com info@abbomax.com



DATA ATTACHMENTS



Immunohistochemistry: Human Spleen (FFPE) stained with Rabbit anti-IgG (Cat# 500-1754) at 1:200 for 10 min @ RT. Staining of formalin-fixed tissue requires boiling tissue sections in 10 mM Citrate Buffer, pH 6.0 for 10 min followed by cooling at RT for 20 min.

REFERENCES

FOR RESEARCH USE ONLY.

AbboMax, Inc 2528 Qume Drive, Suite 8, San Jose, California 95131, USA
1 408-573-1898 (Tel). 1 408-573-1858 (Fax). www.abbomax.com info@abbomax.com