



Mouse anti c-erbB-2/HER-2 monoclonal Antibody

Alternative Name(s): c-erbB2/neu protein

Order Information

- **Description:** c-erbB-2/HER-2
- **Catalogue:** 500-12424
- **Lot:** See label
- **Size:** 100ug/200ul
- **Host:** Mouse
- **Clone:** S495
- **Application:** IHC(P), WB
- **Reactivity:** Hu, Ms, Rt

ANTIGEN PREPARATION

A synthetic peptide corresponding to the C-terminus of Her2 protein. This sequence is identical in human, mouse, and rat

BACKGROUND

Oncoprotein Her-2/Neu/ c-erbB-2 belongs to one of the four members of the ErbB receptor family. They are transmembrane receptor-like tyrosine kinases which can be autophosphorylated without ligand binding process when it is overexpressed in breast cancers. Her2 is an important biomarker in breast cancer diagnosis. The antibodies/ heregulin can suppress phosphorylation of HER2 on tyrosine Y1248. Endogenous anti-HER2 antibodies can effectively suppress HER2 kinase activity and downstream signaling to inhibit the transformed phenotype of HER2-expressing tumor cells. Thus, anti-Her2 antibodies have been used widely in the treatment of the breast cancer and other carcinomas.

PURIFICATION

The mouse IgG is purified by Protein A-Affinity Chromatography according to Isotyping

FORMULATION

This affinity purified antibody is supplied in sterile Phosphatebuffered saline (pH7.2) containing antibody stabilizer

SPECIFICITY

This antibody recognizes Her-2 protein. It cross-reacts with human, rat and mouse. The other species was not tested.

STORAGE

The antibodies are stable for 24 months from date of receipt when stored at -20°C to -70°C . The antibodies can be stored at 2°C - 8°C for three month without detectable loss of activity. Avoid repeated freezing-thawing cycles.

APPLICATIONS/SUGGESTED WORKING DILUTIONS*

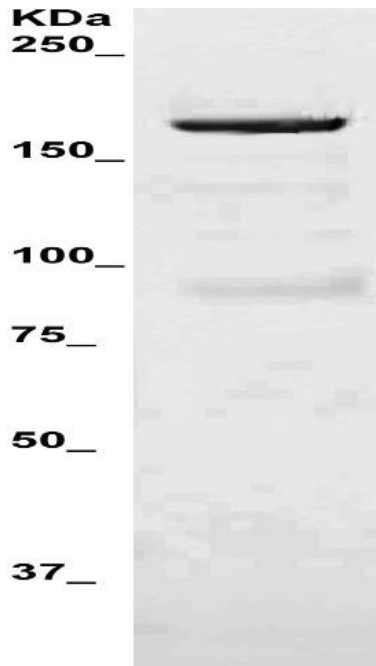
- Western Blot: 0.1-1 $\mu\text{g/ml}$
- ELISA: 0.01-0.1 $\mu\text{g/ml}$
- Immunoprecipitation: 2-5 $\mu\text{g/ml}$
- IHC: 2-10 $\mu\text{g/ml}$
- Flow cytometry: Not tested
- Molecular Weight: 185.0
- Positive Control: Kidney Tissue
- Cellular Location: Cell Membrane

*Optimal dilutions should be determined by researchers for the specific applications.

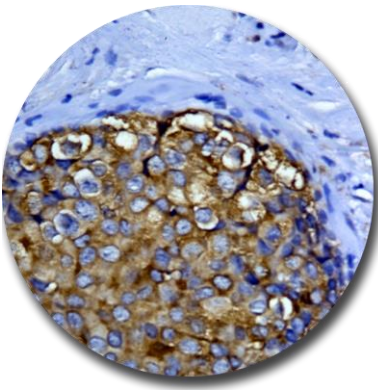
FOR RESEARCH USE ONLY.

AbboMax, Inc 2528 Qume Drive, Suite 8, San Jose, California 95131, USA
1 408-573-1898 (Tel). 1 408-573-1858 (Fax). www.abbomax.com info@abbomax.com

DATA ATTACHMENTS



Western Blot: The whole lysate derived from SKBR3 (20 ug/lane) immunoblotted by Mouse anti - Her2 (Cat# 500-12424) at 1:500. Observed a major immunoreactive band at molecular weight ~185kDa.



Immunohistochemistry: Human Breast carcinoma (FFPE) stained with Mouse anti-Her2 (Cat# 500-12424) at 1:200 for 10 min @ RT. Staining of formalin-fixed tissue requires boiling tissue sections in 10 mM Citrate Buffer, pH 6.0 for 10 min followed by cooling at RT for 20 min.

REFERENCES

FOR RESEARCH USE ONLY.