



Rabbit anti Calretinin Polyclonal Antibody

Alternative Name(s): CALB2, Calretinin, Calbindin2

Order Information

- **Description:** Calretinin
- **Catalogue:** 500-1174
- **Lot:** See label
- **Size:** 100ug/200ul
- **Host:** Rabbit
- **Clone:** nan
- **Application:** IHC(P), WB
- **Reactivity:** Hu, Ms, Rt

ANTIGEN PREPARATION

A synthetic peptide of internal segment of human calretinin protein. It is identical among human, mice and rat species.

BACKGROUND

Calretinin is an intracellular calcium-binding protein that belongs to the troponin C superfamily. It has cellular functions including intracellular calcium buffering, messenger targeting, and is involved in processes such as cell cycle arrest, and apoptosis. Calretinin belongs to the so-called EF-hand family of calcium binding proteins. The EF-hand is an evolutionary well preserved amino acid domain with a characteristic three-dimensional structure and with a high affinity for calcium ions. Calretinin is composed of 269-271 amino acid residues and contains six EF-hand domains. The mammalian neuronal cytoplasmic concentration of calretinin was estimated to be in order of tens of micromoles.

PURIFICATION

The Rabbit IgG is purified by Epitope Affinity Purification

FORMULATION

This affinity purified antibody is supplied in sterile Phosphatebuffered saline (pH7.2) containing antibody stabilizer

SPECIFICITY

This antibody reacts with Calretinin. It cross reacts to human, mice and rat.

STORAGE

The antibodies are stable for 24 months from date of receipt when stored at -20°C to -70°C . The antibodies can be stored at 2°C - 8°C for three month without detectable loss of activity. Avoid repeated freezing-thawing cycles.

APPLICATIONS/SUGGESTED WORKING DILUTIONS*

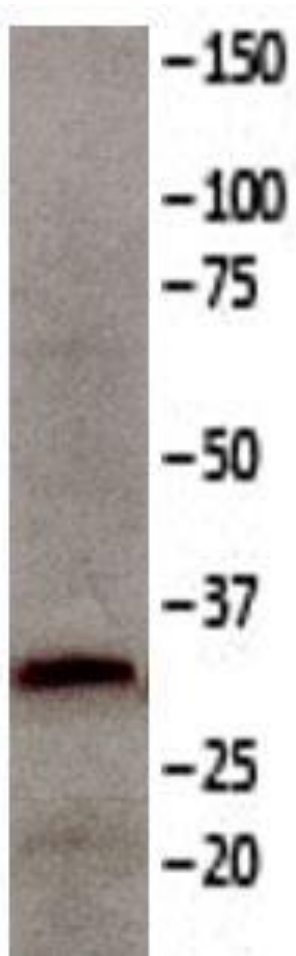
- Western Blot: 0.1-1 $\mu\text{g/ml}$
- ELISA: 0.01-0.1 $\mu\text{g/ml}$
- Immunoprecipitation: 2-5 $\mu\text{g/ml}$
- IHC: 2-10 $\mu\text{g/ml}$
- Flow cytometry: Not tested
- Molecular Weight: 29.0
- Positive Control: Kidney Tissue
- Cellular Location: Cell Membrane

*Optimal dilutions should be determined by researchers for the specific applications.

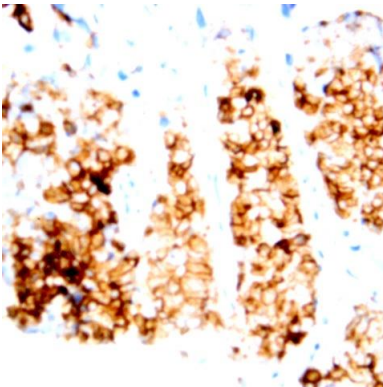
FOR RESEARCH USE ONLY.

AbboMax, Inc 2528 Qume Drive, Suite 8, San Jose, California 95131, USA
1 408-573-1898 (Tel). 1 408-573-1858 (Fax). www.abbomax.com info@abbomax.com

DATA ATTACHMENTS



Western Blot: The whole cell lysate derived from MCF7 was separated in 12% SDS-PAGE, transferred onto NC membrane, and immunoblotted by Rabbit anti Calretinin (Cat#500-1174) antibody at 1:500 . An immunoreactive band around ~29 kDa is observed.



Immunohistochemistry: Human Breast carcinoma (FFPE) stained with Rabbit anti-Caltetin (Cat# 500-1174) at 1:200 for 10 min @ RT. Staining of formalin-fixed tissue requires boiling tissue sections in 10 mM Citrate Buffer, pH 6.0 for 10 min followed by cooling at RT for 20 min.

REFERENCES

FOR RESEARCH USE ONLY.