



Rabbit anti Amyloid Polyclonal Antibody

Alternative Name(s): Amyloid

Order Information

- **Description:** amyloid
- **Catalogue:** 500-11284
- **Lot:** See label
- **Size:** 100ug/200ul
- **Host:** Rabbit
- **Clone:** nan
- **Application:** IHC, WB, ELISA, IP
- **Reactivity:** Hu, Ms

ANTIGEN PREPARATION

A synthetic peptide derived N-terminus of amyloid protein

BACKGROUND

nan

PURIFICATION

The Rabbit IgG is purified by Epitope Affinity Purification

FORMULATION

This affinity purified antibody is supplied in sterile Phosphatebuffered saline (pH7.2) containing antibody stabilizer

SPECIFICITY

This antibody reacts with human and mice Amyloid. The other species are not tested.

STORAGE

The antibodies are stable for 24 months from date of receipt when stored at -20°C to -70°C . The antibodies can be stored at 2°C - 8°C for three month without detectable loss of activity. Avoid repeated freezing-thawing cycles.

APPLICATIONS/SUGGESTED WORKING DILUTIONS*

- Western Blot: 0.1-1 $\mu\text{g}/\text{ml}$
- ELISA: 0.01-0.1 $\mu\text{g}/\text{ml}$
- Immunoprecipitation: 2-5 $\mu\text{g}/\text{ml}$
- IHC: 2-10 $\mu\text{g}/\text{ml}$
- Flow cytometry: Not tested
- Molecular Weight: ~5
- Positive Control: Kidney Tissue
- Cellular Location: Cell Membrane

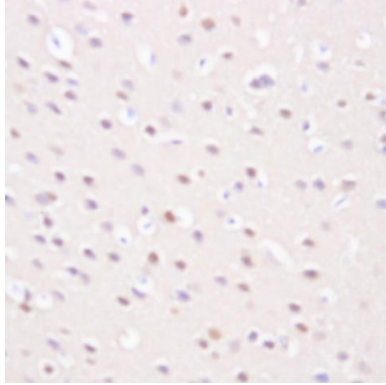
*Optimal dilutions should be determined by researchers for the specific applications.

FOR RESEARCH USE ONLY.

AbboMax, Inc 2528 Qume Drive, Suite 8, San Jose, California 95131, USA
1 408-573-1898 (Tel). 1 408-573-1858 (Fax). www.abbomax.com info@abbomax.com



DATA ATTACHMENTS



Immunohistochemistry: Human Brain (AD) (FFPE) stained with Rabbit anti-Amyloid (Cat# 500-11284) at 1:200 for 10 min @ RT. Staining of formalin-fixed tissue requires boiling tissue sections in 10 mM Citrate Buffer, pH 6.0 for 10 min followed by cooling at RT for 20 min.

REFERENCES

FOR RESEARCH USE ONLY.

AbboMax, Inc 2528 Qume Drive, Suite 8, San Jose, California 95131, USA
1 408-573-1898 (Tel). 1 408-573-1858 (Fax). www.abbomax.com info@abbomax.com