



## Mouse anti Phosphoserine Monoclonal Antibody

Alternative Name(s): pSER

### Order Information

- **Description:** Phosphoserine
- **Catalogue:** 500-020
- **Lot:** See label
- **Size:** 100ug/200ul
- **Host:** Mouse
- **Clone:** 2A4
- **Application:** WB, IP, IHC(P)
- **Reactivity:** Hu, Ms, Rt

### **ANTIGEN PREPARATION**

A chemically linked phosphoserine.

### **BACKGROUND**

Protein phosphorylation is involved in cell signaling pathways. These cascades are mediated by two types of kinases: serine/threonine kinases which phosphorylate serine and threonine amino acid side chains and tyrosine kinases which phosphorylate tyrosine amino acid side chains. This process is regulated by kinases and phosphatases.

### **PURIFICATION**

The mouse IgG is purified by Protein A-Affinity Chromatography according to Isotyping

### **FORMULATION**

This affinity purified antibody is supplied in sterile Tris-buffered saline (pH7.2) containing antibody stabilizer

### **SPECIFICITY**

This antibody recognizes phospho-serine (phospho-Ser) only. It does not cross react with phospho-Tyrosine or phospho-Threonine

### **STORAGE**

The antibodies are stable for 24 months from date of receipt when stored at  $-20^{\circ}\text{C}$  to  $-70^{\circ}\text{C}$ . The antibodies can be stored at  $2^{\circ}\text{C}$ - $8^{\circ}\text{C}$  for three month without detectable loss of activity. Avoid repeated freezing-thawing cycles.

### **APPLICATIONS/SUGGESTED WORKING DILUTIONS\***

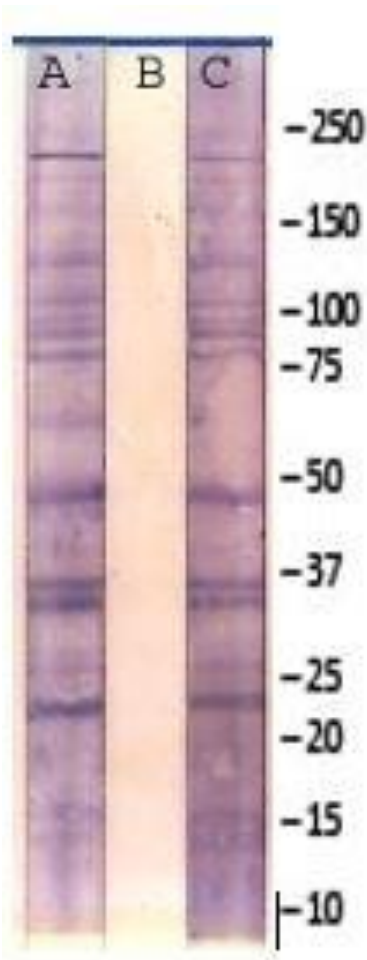
- Western Blot: 0.1-1  $\mu\text{g/ml}$
- ELISA: 0.01-0.1  $\mu\text{g/ml}$
- Immunoprecipitation: 2-5  $\mu\text{g/ml}$
- IHC: 2-5  $\mu\text{g/ml}$
- Flow cytometry: Not tested
- Molecular Weight: nan
- Positive Control: Kidney Tissue
- Cellular Location: Cell Membrane

\*Optimal dilutions should be determined by researchers for the specific applications.

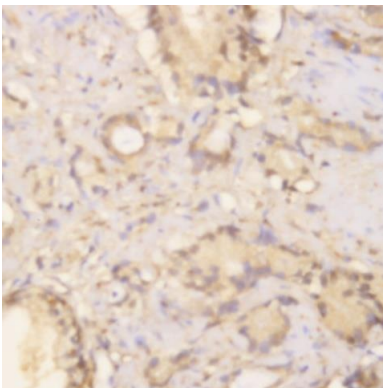
### **FOR RESEARCH USE ONLY.**

AbboMax, Inc 2528 Qume Drive, Suite 8, San Jose, California 95131, USA  
1 408-573-1898 (Tel). 1 408-573-1858 (Fax). [www.abbomax.com](http://www.abbomax.com) [info@abbomax.com](mailto:info@abbomax.com)

**DATA ATTACHMENTS**



Western Blot: The cell lysate derived from EGF-stimulated A431 was resolved onto 12% SDS-PAGE and immunoblotted by Mouse anti pSER (Cat#500-020) at 1:500 (lane A); or pre-incubated by Phosphoserine (lane B) or pre-incubated by phosphotyrosine (lane C). A panel of phosphorylated proteins was observed.



Immunohistochemistry: Human breast carcinoma (FFPE) stained with Mouse anti-pSER (Cat# 500-020) at 1:200 for 10 min @ RT. Staining of formalin-fixed tissue requires boiling tissue sections in 10 mM Citrate Buffer, pH 6.0 for 10 min followed by cooling at RT for 20 min.

**REFERENCES**

**FOR RESEARCH USE ONLY.**