

AbboMax, Inc.

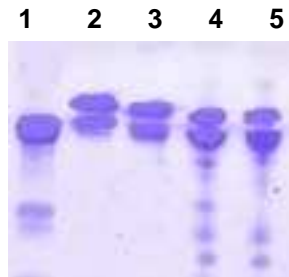
1161 Ringwood Ct. Suite#100,
San Jose, California, 95131. U.S.A.
Tel: 408-321-9898. 1-866-628-9898(USA)
Fax: 408-321-9896.
E-mail: info@abbomax.com,
www.abbomax.com

Ab^{Max} peptide carrier protein conjugation (Cat# 60004)

The peptide sequence information should be available for protein chemistry determination.

Data will be provided with the project:

- ❖ KLH/BSA/GGG/THY/PPD (a selected carrier protein) conjugation datasheet
- ❖ Conjugation efficiency determination (optional)—the molar ratio of peptide/carrier protein, SDS-PAGE verification



PP-Carrier protein on 10% SDS-PAGE

- ❖ Lane 1: BSA
- ❖ Lane 2: BSA-Peptide1
- ❖ Lane 3: BSA-peptide 2
- ❖ Lane 4: Activated BSA prior to dialysis
- ❖ Lane 5: Activated BSA post dialysis