



Mouse anti CD4(T4)-Hu Monoclonal Antibody

Alternative Name(s): CD4 antigen; T-cell surface glycoprotein CD4; T-cell surface antigen T4/Leu-3.

Order Information

- **Description:** CD4
- **Catalogue:** 603-040
- **Lot:** See label
- **Size:** 100ug/200ul
- **Host:** Mouse
- **Clone:** S3.5
- **Application:** IHC(P), FC
- **Reactivity:** Hu

ANTIGEN PREPARATION

Human T cells expressed CD4

BACKGROUND

CD4 is a glycoprotein consisting of up to five polypeptide chains (gp20, gp26, p16, p20, p28). CD3 is required for proper assembly, trafficking and surface expression of TCR complex. CD3 is expressed by thymocytes in a developmentally regulated manner and by all mature T cells. CD3 is involved in T cell activation, proliferation and apoptosis pathway. This protein is present on virtually all peripheral blood T cells and thymocytes. This anti-CD3 antibody is commonly used as a phenotypic marker for human T cells.

PURIFICATION

The mouse IgG is purified by Protein A-Affinity Chromatography according to Isotyping

FORMULATION

This affinity purified antibody is supplied in sterile Phosphatebuffered saline (pH7.2) containing antibody stabilizer

SPECIFICITY

This antibody recognizes human CD4 protein. The other species was not tested.

STORAGE

The antibodies are stable for 24 months from date of receipt when stored at -20°C to -70°C . The antibodies can be stored at 2°C - 8°C for three month without detectable loss of activity. Avoid repeated freezing-thawing cycles.

APPLICATIONS/SUGGESTED WORKING DILUTIONS*

- Western Blot: 0.1-1 $\mu\text{g/ml}$
- ELISA: 0.01-0.1 $\mu\text{g/ml}$
- Immunoprecipitation: 2-5 $\mu\text{g/ml}$
- IHC: 2-10 $\mu\text{g/ml}$
- Flow cytometry: 0.5-5 $\mu\text{g}/10^6$ cells
- Molecular Weight: 55.0
- Positive Control: Kidney Tissue
- Cellular Location: Cell Membrane

*Optimal dilutions should be determined by researchers for the specific applications.

FOR RESEARCH USE ONLY.

AbboMax, Inc 2528 Qume Drive, Suite 8, San Jose, California 95131, USA
1 408-573-1898 (Tel). 1 408-573-1858 (Fax). www.abbomax.com info@abbomax.com

DATA ATTACHMENTS

**MW
(kDa)
150**

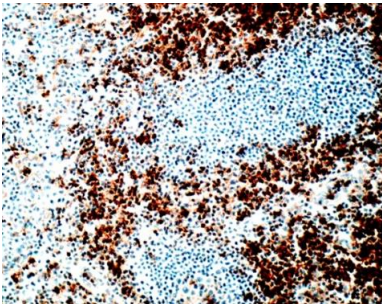
100-

50-

10-



Western Blot: The cell lysate derived from Reh cells was immunoblotted by the Mouse anti CD4 (Cat#603-040) @ 1:500. An immunoreactive band around ~21 kDa was observed



Immunohistochemistry: Human Tonsil (FFPE) stained with Mouse anti-CD4 (Clone S3.5) (Cat#603-040) at 1:200 for 10 min @ RT. Staining of formalin-fixed tissue requires boiling tissue sections in 10 mM Citrate Buffer, pH 6.0 for 10 min followed by cooling at RT for 20 min.

REFERENCES

FOR RESEARCH USE ONLY.