



Rabbit anti CDC25b Polyclonal Antibody

Alternative Name(s): Cell Division cycle 25b

Order Information

- **Description:** CDC25b
- **Catalogue:** 601-630
- **Lot:** See label
- **Size:** 100ug/200ul
- **Host:** Rabbit
- **Clone:** nan
- **Application:** IHC(P), WB
- **Reactivity:** Hu

ANTIGEN PREPARATION

A synthetic peptide derived from N-terminus of human CDC25B protein.

BACKGROUND

Three homologues of CDC25 called CDC25A/B/C Cdc25 tyrosine phosphatases positively regulate the cell cycle by activating cyclin-dependent kinase/cyclin complexes CDK1 (CDC2). Dephosphorylation of threonine 14 and tyrosine 15 of CDK1 by CDC25 phosphatases is a key step in the activation of the CDK1-cyclin B protein kinase. Of the three mammalian Cdc25 isoforms, Cdc25A is phosphorylated by genotoxic stress-activated Chk1 or Chk2, which triggers its SCFbeta-TrCP-mediated degradation. CDC25B is degraded by the proteasome. CDK1-cyclin A phosphorylation targets CDC25B for degradation and this might be an important component of cell cycle regulation at the G2/M transition.

PURIFICATION

The Rabbit IgG is purified by Epitope Affinity Purification

FORMULATION

This affinity purified antibody is supplied in sterile Phosphatebuffered saline (pH7.2) containing antibody stabilizer

SPECIFICITY

This antibody recognizes human CDC25B protein. The other species were not tested.

STORAGE

The antibodies are stable for 24 months from date of receipt when stored at -20oC to -70oC. The antibodies can be stored at 2oC-8oC for three month without detectable loss of activity. Avoid repeated freezing-thawing cycles.

APPLICATIONS/SUGGESTED WORKING DILUTIONS*

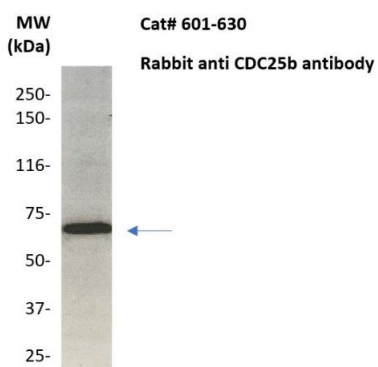
- Western Blot: 0.1-1 µg/ml
- ELISA: 0.01-0.1 µg/ml
- Immunoprecipitation: 2-5 µg/ml
- IHC: 2-10 µg/ml
- Flow cytometry: Not tested
- Molecular Weight: 60.0
- Positive Control: Kidney Tissue
- Cellular Location: Cell Membrane

*Optimal dilutions should be determined by researchers for the specific applications.

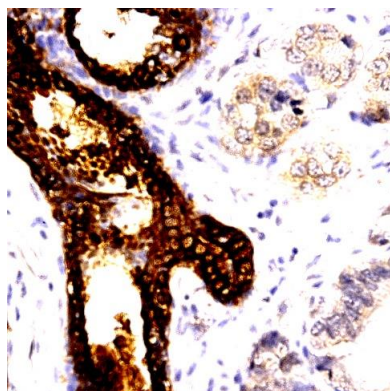
FOR RESEARCH USE ONLY.

AbboMax, Inc 2528 Qume Drive, Suite 8, San Jose, California 95131, USA
1 408-573-1898 (Tel). 1 408-573-1858 (Fax). www.abbomax.com info@abbomax.com

DATA ATTACHMENTS



Western Blot: The whole lysate derived from Hela (20 ug/lane) immunoblotted by Rabbit anti –CDC25b (Cat# 601-630) at 1:500. Observed a major immunoreactive band at molecular weight ~65 kDa.



Immunohistochemistry: Human Breast carcinoma (FFPE) stained with Rabbit anti-CDC25b (Cat# 601-630) at 1:200 for 10 min @ RT. Staining of formalin-fixed tissue requires boiling tissue sections in 10 mM Citrate Buffer, pH 6.0 for 10 min followed by cooling at RT for 20 min.

REFERENCES

FOR RESEARCH USE ONLY.

AbboMax, Inc 2528 Qume Drive, Suite 8, San Jose, California 95131, USA
1 408-573-1898 (Tel). 1 408-573-1858 (Fax). www.abbomax.com info@abbomax.com