



## **Rabbit anti c-Jun(pS63) Polyclonal Antibody**

**Alternative Name(s):** Transcription factor c-Jun; v-Jun sarcoma virus 17-oncogene; JUN; AP1; Jun-proto-oncogene

### **Order Information**

- **Description:** c-Jun(pS63)
- **Catalogue:** 601-330
- **Lot:** See label
- **Size:** 100ug/200ul
- **Host:** Rabbit
- **Clone:** nan
- **Application:** IHC(P), WB
- **Reactivity:** Hu/Rt/Ms

### **ANTIGEN PREPARATION**

A synthetic peptide corresponding to the epitope –LTSPD– at a phosphorylation site at serine 63 of human c-Jun protein. This sequence is identical within human, rat, mouse, bovine and dog.

### **BACKGROUND**

c-Jun, also known as AP1, v-Jun or AH119, is a component of the transcription factor AP-1, which binds and activates transcription at TRE/AP-1 elements. The transcriptional activity of c-Jun is regulated by phosphorylation at Ser63 and Ser73 as well as Thr 91 and Thr93. Extracellular signals including growth factors, transforming oncoproteins and UV irradiation stimulate phosphorylation of c-Jun at Ser63/73 and activate c-Jun-dependent transcription. The MAP kinase homologue SAPK/JNK binds to the amino-terminal region of c-Jun and phosphorylates c-Jun at Ser63/73 and Thr91

### **PURIFICATION**

The Rabbit IgG is purified by site-modified Epitope Affinity Purification.

### **FORMULATION**

This affinity purified antibody is supplied in sterile Tris-buffered saline (pH7.2) containing antibody stabilizer

### **SPECIFICITY**

This antibody recognizes ~48 kDa of human c-Jun protein. It does not recognize non-phosphorylated peptides. This antibody also reacts with mouse and rat. The other species are not tested.

### **STORAGE**

The antibodies are stable for 24 months from date of receipt when stored at –20oC to –70oC. The antibodies can be stored at 2oC-8oC for three month without detectable loss of activity. Avoid repeated freezing-thawing cycles.

### **APPLICATIONS/SUGGESTED WORKING DILUTIONS\***

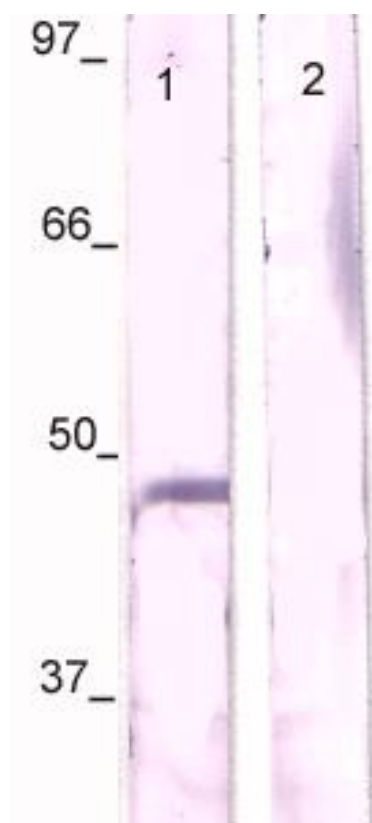
- Western Blot: 0.1-1 µg/ml
- ELISA: 0.01-0.1 µg/ml
- Immunoprecipitation: 2-5 µg/ml
- IHC: 2-10 µg/ml
- Flow cytometry: Not tested
- Molecular Weight: 48.0
- Positive Control: Kidney Tissue
- Cellular Location: Cell Membrane

\*Optimal dilutions should be determined by researchers for the specific applications.

### **FOR RESEARCH USE ONLY.**

AbboMax, Inc 2528 Qume Drive, Suite 8, San Jose, California 95131, USA  
1 408-573-1898 (Tel). 1 408-573-1858 (Fax). [www.abbomax.com](http://www.abbomax.com) [info@abbomax.com](mailto:info@abbomax.com)

## DATA ATTACHMENTS



Western Blot: The cell lysate derived from UV treated 3T3 cells (20 ug/lane) was immunoprobed by Rabbit anti-c-Jun (pS63) (Cat#601-330) at 1:500. An immunoreactive band is observed around ~48kDa (lane 1). This band is blocked by pre-incubation with immunizing peptide (Lane 2).

## REFERENCES

### FOR RESEARCH USE ONLY.

AbboMax, Inc 2528 Qume Drive, Suite 8, San Jose, California 95131, USA  
1 408-573-1898 (Tel). 1 408-573-1858 (Fax). [www.abbomax.com](http://www.abbomax.com) [info@abbomax.com](mailto:info@abbomax.com)