



Rabbit anti P53(pS15) Polyclonal Antibody

Alternative Name(s): Tumor protein p53; TP53; tumor suppressor phosphoprotein p53

Order Information

- **Description:** P53(pS15)
- **Catalogue:** 600-550
- **Lot:** See label
- **Size:** 100ug/200ul
- **Host:** Rabbit
- **Clone:** nan
- **Application:** IHC(P), WB
- **Reactivity:** Hu, Ms, Rt

ANTIGEN PREPARATION

A synthetic peptide corresponding to the epitope –PLSQE- at a phosphorylation site at serine 15 of human p53 protein

BACKGROUND

P53, also known as protein 53, or tumor suppressor protein 53, plays important roles in cellular response to DNA damage and other genomic aberration. Mutations in the p53 tumor suppressor gene giving rise to mutant p53 proteins are among the most common genetic alterations associated with tumor cells. P53 protein is phosphorylated at multiple sites in vivo and in vitro in response to different stimuli. UV caused DNA damage can induce Ser9, Ser15, Ser20 phosphorylation while ATM, ATR, DNA-PK at Ser15 and Ser37.

PURIFICATION

The Rabbit IgG is purified by site-modified Epitope Affinity Purification.

FORMULATION

This affinity purified antibody is supplied in sterile Tris-buffered saline (pH7.2) containing antibody stabilizer

SPECIFICITY

This antibody recognizes ~53 kDa of humanP53 protein. It does not recognize non-phosphorylated peptides. This antibody also reacts with mouse and rat. The other species are not tested.

STORAGE

The antibodies are stable for 24 months from date of receipt when stored at –20oC to –70oC. The antibodies can be stored at 2oC-8oC for three month without detectable loss of activity. Avoid repeated freezing-thawing cycles.

APPLICATIONS/SUGGESTED WORKING DILUTIONS*

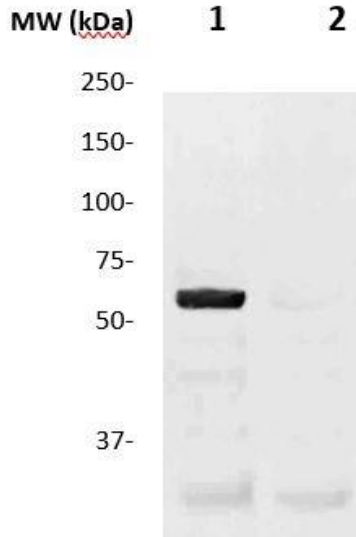
- Western Blot: 0.1-1 µg/ml
- ELISA: 0.01-0.1 µg/ml
- Immunoprecipitation: 2-5 µg/ml
- IHC: 2-10 µg/ml
- Flow cytometry: Not tested
- Molecular Weight: 53.0
- Positive Control: Kidney Tissue
- Cellular Location: Cell Membrane

*Optimal dilutions should be determined by researchers for the specific applications.

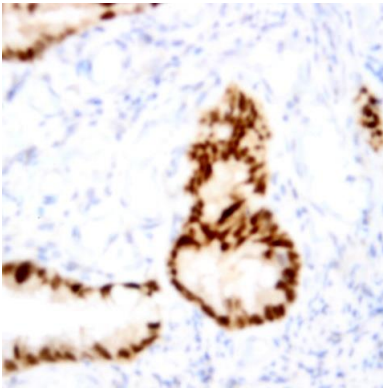
FOR RESEARCH USE ONLY.

AbboMax, Inc 2528 Qume Drive, Suite 8, San Jose, California 95131, USA
1 408-573-1898 (Tel). 1 408-573-1858 (Fax). www.abbomax.com info@abbomax.com

DATA ATTACHMENTS



Western Blot: The cell lysate derived from UV stimulated Hela cells was immunoprobed by Rabbit anti-p53 (pS15) (Cat#600-550) at 1:500. An immunoreactive band is observed around ~53kDa (Lane 1). The lane 2 is a negative control.



Immunohistochemistry: Human Breast carcinoma (FFPE) stained with Rabbit anti-p53 (Cat# 600-550) at 1:200 for 10 min @ RT. Staining of formalin-fixed tissue requires boiling tissue sections in 10 mM Citrate Buffer, pH 6.0 for 10 min followed by cooling at RT for 20 min.

REFERENCES

FOR RESEARCH USE ONLY.