



## **Rabbit anti PAK4(pS474) Polyclonal Antibody**

**Alternative Name(s): p21 protein (Cdc42/Rac)-activated kinase 4**

### **Order Information**

- **Description:** PAK4(pS474)
- **Catalogue:** 600-030
- **Lot:** See label
- **Size:** 100ug/200ul
- **Host:** Rabbit
- **Clone:** nan
- **Application:** IHC(P), WB
- **Reactivity:** Hu, Ms, Rt

### **ANTIGEN PREPARATION**

A synthetic peptide surrounding the epitope RKSLV-with a phosphorylation at Serine 474 of human PAK4. This sequence is also identical within human, rat, mouse, chicken, bovine and dog species.

### **BACKGROUND**

p21-activated protein kinase (PAK) serine/threonine kinases are important effectors of Rho family GTPases and have been implicated in the regulation of cell morphology and motility, as well as in cell transformation. The phosphorylation of serine 474 as the likely autophosphorylation site in the kinase domain of PAK4 occurs in vivo. PAK4 is frequently over-expressed in human tumor cell lines of various tissue origins, indicates that the phosphorylation of PAK4 is required in oncogenic transformation and Ras-driven, anchorage-independent growth.

### **PURIFICATION**

The Rabbit IgG is purified by site-modified Epitope Affinity Purification.

### **FORMULATION**

This affinity purified antibody is supplied in sterile Tris-buffered saline (pH7.2) containing antibody stabilizer

### **SPECIFICITY**

This antibody recognizes the phosphorylated peptide only. It recognizes PAK4 protein at a phosphorylation site of Serine 474 (~68kDa), or serine 602 of PAK5 (~90kDa) or Serine 560 of PAK6 (~80 kDa). It does not cross react to other PAK1, PAK2 or PAK3. This antibody reacts with human, rat and mouse. The other species are not tested.

### **STORAGE**

The antibodies are stable for 24 months from date of receipt when stored at -20oC to -70oC. The antibodies can be stored at 2oC-8oC for three month without detectable loss of activity. Avoid repeated freezing-thawing cycles.

### **APPLICATIONS/SUGGESTED WORKING DILUTIONS\***

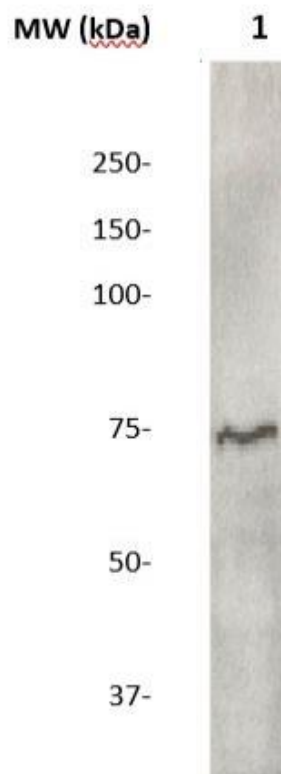
- Western Blot: 0.1-1 µg/ml
- ELISA: 0.01-0.1 µg/ml
- Immunoprecipitation: 2-5 µg/ml
- IHC: 2-10 µg/ml
- Flow cytometry: Not tested
- Molecular Weight: 73.0
- Positive Control: Kidney Tissue
- Cellular Location: Cell Membrane

\*Optimal dilutions should be determined by researchers for the specific applications.

### **FOR RESEARCH USE ONLY.**

AbboMax, Inc 2528 Qume Drive, Suite 8, San Jose, California 95131, USA  
1 408-573-1898 (Tel). 1 408-573-1858 (Fax). [www.abbomax.com](http://www.abbomax.com) [info@abbomax.com](mailto:info@abbomax.com)

## DATA ATTACHMENTS



Western Blot: The cell lysate derived from HEK293 cells was immunoprobed by Rabbit anti-PAK4 (pS474) (Cat#600-030) at 1:500. An immunoreactive band is observed around ~68kDa.

## REFERENCES

### FOR RESEARCH USE ONLY.

AbboMax, Inc 2528 Qume Drive, Suite 8, San Jose, California 95131, USA  
1 408-573-1898 (Tel). 1 408-573-1858 (Fax). [www.abbomax.com](http://www.abbomax.com) [info@abbomax.com](mailto:info@abbomax.com)