



## Rabbit anti BCL-10 Polyclonal Antibody

Alternative Name(s): B-cell CLL/lymphoma 10

### Order Information

- **Description:** BCL-10
- **Catalogue:** 500-7114
- **Lot:** See label
- **Size:** 100ug/200ul
- **Host:** Rabbit
- **Clone:** nan
- **Application:** IHC(P), WB
- **Reactivity:** Hu, Ms, Rt

### **ANTIGEN PREPARATION**

A synthetic peptide of internal segment of human BCL-10

### **BACKGROUND**

Bcl10, also designated CIPER, c-CARMEN and mE10, was first identified as a gene truncated or mutated in MALT B cell lymphomas and other tumor types. Bcl10 is homologous to the equine herpesvirus-2 E10 gene and, like E10, it contains an N-terminal caspase recruitment domain (CARD). Expression of Bcl10 has been shown to induce NFkB activation in a NIK-dependent pathway, and research indicates that the CARD domain is essential for this activation; although in a separate study, Bcl10 by itself did not induce JNK or NFkB activation. Overexpression of Bcl10 has been shown to induce apoptosis in a manner dependent on CARD-mediated oligomerization. Bcl10 has also been shown to play a role in processing of caspase-9 to its active dimer. Other studies have shown that Bcl10 is not mutated in many human tumors and lymphomas.

### **PURIFICATION**

The Rabbit IgG is purified by Epitope Affinity Purification

### **FORMULATION**

This affinity purified antibody is supplied in sterile Phosphatebuffered saline (pH7.2) containing antibody stabilizer

### **SPECIFICITY**

This antibody recognizes BCL-10 protein. It reacts to human, mice and rat. The other species not tested.

### **STORAGE**

The antibodies are stable for 24 months from date of receipt when stored at -20oC to -70oC. The antibodies can be stored at 2oC-8oC for three month without detectable loss of activity. Avoid repeated freezing-thawing cycles.

### **APPLICATIONS/SUGGESTED WORKING DILUTIONS\***

- Western Blot: 0.1-1 µg/ml
- ELISA: 0.01-0.1 µg/ml
- Immunoprecipitation: 2-5 µg/ml
- IHC: 2-10 µg/ml
- Flow cytometry: Not tested
- Molecular Weight: 30.0
- Positive Control: Kidney Tissue
- Cellular Location: Cell Membrane

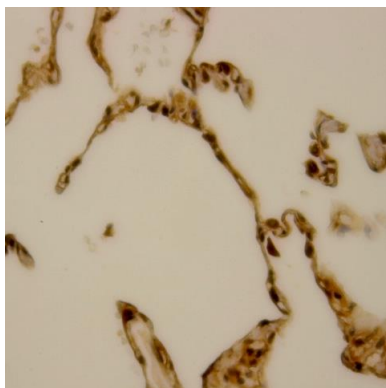
\*Optimal dilutions should be determined by researchers for the specific applications.

### **FOR RESEARCH USE ONLY.**

AbboMax, Inc 2528 Qume Drive, Suite 8, San Jose, California 95131, USA  
1 408-573-1898 (Tel). 1 408-573-1858 (Fax). [www.abbomax.com](http://www.abbomax.com) [info@abbomax.com](mailto:info@abbomax.com)



## DATA ATTACHMENTS



Immunohistochemistry: Human Lung carcinoma (FFPE) stained with Rabbit anti-BCL-10 (Cat# 500-7114) at 1:200 for 10 min @ RT. Staining of formalin-fixed tissue requires boiling tissue sections in 10 mM Citrate Buffer, pH 6.0 for 10 min followed by cooling at RT for 20 min.

## REFERENCES

### FOR RESEARCH USE ONLY.

AbboMax, Inc 2528 Qume Drive, Suite 8, San Jose, California 95131, USA  
1 408-573-1898 (Tel). 1 408-573-1858 (Fax). [www.abbomax.com](http://www.abbomax.com) [info@abbomax.com](mailto:info@abbomax.com)