



## Mouse anti c-erbB-4/HER-4 Monoclonal Antibody

**Alternative Name(s):** Proto-oncogene-like protein c-ErbB-4; v-erb-a erythroblastic leukemia viral oncogene

**homolog 4 HER4; Tyrosine kinase-type cell surface receptor HER4; p180erbB4;**

**Receptor tyrosine-protein kinase erbB-4**

### Order Information

- **Description:** c-erbB-4/HER-4
- **Catalogue:** 500-6664
- **Lot:** See label
- **Size:** 100ug/200ul
- **Host:** Mouse
- **Clone:** ABM338
- **Application:** IHC(P), WB
- **Reactivity:** Hu,Ms

### ANTIGEN PREPARATION

A synthetic peptide corresponding to the C-terminus of Her4 protein. This sequence is identical in human and mouse.

### BACKGROUND

The HER4/ERBB4 belongs to a member of the Tyr protein kinase family and the epidermal growth factor receptor subfamily. This gene encodes a 180K a single-pass type I transmembrane protein (HER4/p180erbB4) with multiple cysteine rich domains, a transmembrane domain, a tyrosine kinase domain, a phosphatidylinositol-3 kinase binding site and a PDZ domain binding motif. This protein is structurally related to the 185K product (HER2/p185erbB2) of the HER2/ERBB2 proto-oncogene, and is activated by neuregulins. A 45K heparin-binding glycoprotein (p45), and other factors can specifically activates the intrinsic tyrosine kinase activity of HER4 and induces a variety of cellular responses including mitogenesis and differentiation. Multiple proteolytic events allow for the release of a cytoplasmic fragment and an extracellular fragment. This HER4 ligand shares several features with the heregulin family of proteins, including molecular mass, ability to induce differentiation of breast cancer cells, activation of tyrosine phosphorylation in MDA-MB453 cells, and amino-terminal protein sequence. Mutations in this gene have been associated with cancer.

### PURIFICATION

The mouse IgG is purified by Protein A-Affinity Chromatography according to Isotyping

### FORMULATION

This affinity purified antibody is supplied in sterile Phosphatebuffered saline (pH7.2) containing antibody stabilizer

### SPECIFICITY

This antibody recognizes human and mice c-erbB-4/HER-4. The other species not tested.

### STORAGE

The antibodies are stable for 24 months from date of receipt when stored at -20oC to -70oC. The antibodies can be stored at 2oC-8oC for three month without detectable loss of activity. Avoid repeated freezing-thawing cycles.

### APPLICATIONS/SUGGESTED WORKING DILUTIONS\*

- Western Blot: 0.1-1 µg/ml
- ELISA: 0.01-0.1 µg/ml
- Immunoprecipitation: 2-5 µg/ml
- IHC: 2-10 µg/ml
- Flow cytometry: Not tested
- Molecular Weight: 190.0
- Positive Control: Kidney Tissue

### FOR RESEARCH USE ONLY.

AbboMax, Inc 2528 Qume Drive, Suite 8, San Jose, California 95131, USA  
1 408-573-1898 (Tel). 1 408-573-1858 (Fax). [www.abbomax.com](http://www.abbomax.com) [info@abbomax.com](mailto:info@abbomax.com)



- Cellular Location: Cell Membrane

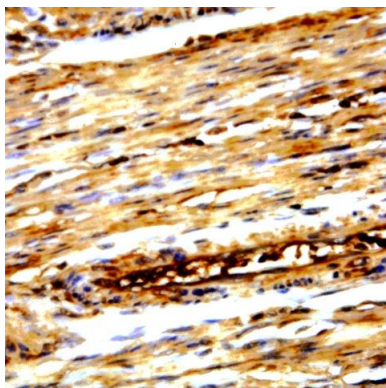
\*Optimal dilutions should be determined by researchers for the specific applications.

**FOR RESEARCH USE ONLY.**

AbboMax, Inc 2528 Qume Drive, Suite 8, San Jose, California 95131, USA  
1 408-573-1898 (Tel). 1 408-573-1858 (Fax). [www.abbomax.com](http://www.abbomax.com) [info@abbomax.com](mailto:info@abbomax.com)



## DATA ATTACHMENTS



Immunohistochemistry: Human Breast carcinoma (FFPE) stained with Mouse anti c-erbB4 (Cat#500-6664) at 1:200 for 10 min @ RT. Staining of formalin-fixed tissue requires boiling tissue sections in 10 mM Citrate Buffer, pH 6.0 for 10 min followed by cooling at RT for 20 min.

## REFERENCES

### FOR RESEARCH USE ONLY.

AbboMax, Inc 2528 Qume Drive, Suite 8, San Jose, California 95131, USA  
1 408-573-1898 (Tel). 1 408-573-1858 (Fax). [www.abbomax.com](http://www.abbomax.com) [info@abbomax.com](mailto:info@abbomax.com)