



Rabbit anti Bim Polyclonal Antibody

Alternative Name(s): BCL2-like 11

Order Information

- **Description:** Bim
- **Catalogue:** 500-4364
- **Lot:** See label
- **Size:** 100ug/200ul
- **Host:** Rabbit
- **Clone:** nan
- **Application:** IHC(P), WB
- **Reactivity:** Hu, Ms, Rt

ANTIGEN PREPARATION

A synthetic peptide derived from N-terminus of human BIM.

BACKGROUND

Bim (bcl-2-interacting mediator of cell death, BCL-2-related Ovarian Death Gene) is a proapoptotic member of the Bcl-2 family that shares the homology domain3 (BH3) with this family. Bim exists in three isoforms: BimEL, BimL, and BimS. As the BCL-2 family members reside upstream of irreversible cellular damage and focus much of their efforts at the level of mitochondria, they play a pivotal role in deciding whether a cell will live or die. In healthy cells, BIM molecules are localized to the microtubule-associated dynein motor complex through association with the LC8 dynein light chain. Following a death signal, LC8 and BIM dissociate from the motor complex and together translocate to the mitochondria. At the mitochondria, BIM is thought to interact with BCL-2 to antagonize its antiapoptotic activity.

PURIFICATION

The Rabbit IgG is purified by Epitope Affinity Purification

FORMULATION

This affinity purified antibody is supplied in sterile Phosphatebuffered saline (pH7.2) containing antibody stabilizer

SPECIFICITY

This antibody recognizes Bim protein. It reacts to human, mice and rat. The other species not tested.

STORAGE

The antibodies are stable for 24 months from date of receipt when stored at -20°C to -70°C . The antibodies can be stored at 2°C - 8°C for three month without detectable loss of activity. Avoid repeated freezing-thawing cycles.

APPLICATIONS/SUGGESTED WORKING DILUTIONS*

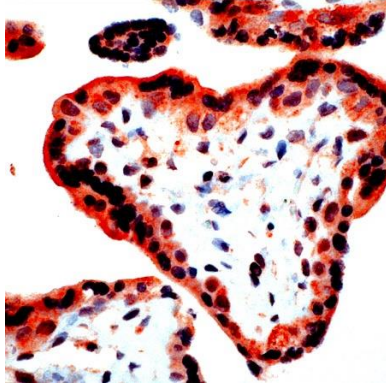
- Western Blot: 0.1-1 $\mu\text{g/ml}$
- ELISA: 0.01-0.1 $\mu\text{g/ml}$
- Immunoprecipitation: 2-5 $\mu\text{g/ml}$
- IHC: 2-10 $\mu\text{g/ml}$
- Flow cytometry: Not tested
- Molecular Weight: 32.0
- Positive Control: Kidney Tissue
- Cellular Location: Cell Membrane

*Optimal dilutions should be determined by researchers for the specific applications.

FOR RESEARCH USE ONLY.

AbboMax, Inc 2528 Qume Drive, Suite 8, San Jose, California 95131, USA
1 408-573-1898 (Tel). 1 408-573-1858 (Fax). www.abbomax.com info@abbomax.com

DATA ATTACHMENTS



Immunohistochemistry: Human placenta (FFPE) stained with Rabbit anti BIM antibody (Cat# 500-24364) at 1:25 for 10 min @ RT. Staining of formalin-fixed tissue requires boiling tissue sections in 10 mM Citrate Buffer, pH 6.0 for 10 min followed by cooling at RT for 20 min.

REFERENCES

FOR RESEARCH USE ONLY.