



Rabbit anti CD40 Polyclonal Antibody

Alternative Name(s): TNF receptor superfamily member 5; TNFRSF5; CD40

Order Information

- **Description:** CD40
- **Catalogue:** 500-3704
- **Lot:** See label
- **Size:** 100ug/200ul
- **Host:** Rabbit
- **Clone:** nan
- **Application:** IHC(P), WB
- **Reactivity:** Hu, Ms, Rt

ANTIGEN PREPARATION

A Synthetic peptide QPVTQEDGKESRISVQERQ derived from human CD40 (258-277aa) was used as an immunogen.

BACKGROUND

The CD40 is a member of the TNF-receptor superfamily. It is a receptor on antigen-presenting cells of the immune system and is essential for mediating a broad variety of immune and inflammatory responses including T cell-dependent immunoglobulin class switching, memory B cell development, and germinal center formation. AT-hook transcription factor AKNA is reported to coordinately regulate the expression of this receptor and its ligand, which may be important for homotypic cell interactions. Adaptor protein TNFR2 interacts with this receptor and serves as a mediator of the signal transduction. The interaction of this receptor and its ligand is found to be necessary for amyloid-beta-induced microglial activation, and thus is thought to be an early event in Alzheimer disease pathogenesis. Mutations affecting this gene are the cause of autosomal recessive hyper-IgM immunodeficiency type 3 (HIGM3). CD40 is a B cell surface antigen.

PURIFICATION

The Rabbit IgG is purified by Epitope Affinity Purification

FORMULATION

This affinity purified antibody is supplied in sterile Phosphatebuffered saline (pH7.2) containing antibody stabilizer

SPECIFICITY

This antibody recognizes CD40 protein. It reacts to human, mice and rat. The other species not tested.

STORAGE

The antibodies are stable for 24 months from date of receipt when stored at -20°C to -70°C . The antibodies can be stored at 2°C - 8°C for three month without detectable loss of activity. Avoid repeated freezing-thawing cycles.

APPLICATIONS/SUGGESTED WORKING DILUTIONS*

- Western Blot: 0.1-1 $\mu\text{g/ml}$
- ELISA: 0.01-0.1 $\mu\text{g/ml}$
- Immunoprecipitation: 2-5 $\mu\text{g/ml}$
- IHC: 2-10 $\mu\text{g/ml}$
- Flow cytometry: Not tested
- Molecular Weight: 35.0
- Positive Control: Kidney Tissue
- Cellular Location: Cell Membrane

FOR RESEARCH USE ONLY.

AbboMax, Inc 2528 Qume Drive, Suite 8, San Jose, California 95131, USA
1 408-573-1898 (Tel). 1 408-573-1858 (Fax). www.abbomax.com info@abbomax.com



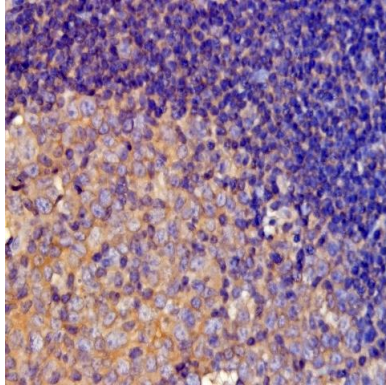
*Optimal dilutions should be determined by researchers for the specific applications.

FOR RESEARCH USE ONLY.

AbboMax, Inc 2528 Qume Drive, Suite 8, San Jose, California 95131, USA
1 408-573-1898 (Tel). 1 408-573-1858 (Fax). www.abbomax.com info@abbomax.com



DATA ATTACHMENTS



Immunohistochemistry: Human tonsil tissue (FFPE) stained with Rabbit anti-CD40 (Cat# 500-3704) polyclonal antibody at 1:100 for 10 min @ RT. Staining of formalin-fixed tissue requires boiling tissue sections in 10 mM Citrate Buffer, pH 6.0 for 10 min followed by cooling at RT for 20 min.

REFERENCES

FOR RESEARCH USE ONLY.

AbboMax, Inc 2528 Qume Drive, Suite 8, San Jose, California 95131, USA
1 408-573-1898 (Tel). 1 408-573-1858 (Fax). www.abbomax.com info@abbomax.com