



## Rabbit anti Bcl-X Polyclonal Antibody

Alternative Name(s): BCL2-like 1; BCL2L1

### Order Information

- **Description:** Bcl-X
- **Catalogue:** 500-3374
- **Lot:** See label
- **Size:** 100ug/200ul
- **Host:** Rabbit
- **Clone:** nan
- **Application:** IHC(P)
- **Reactivity:** Hu, Ms

### **ANTIGEN PREPARATION**

A synthetic peptide derived from N-terminus of human BCL-X protein. This sequence is identical in human and mouse.

### **BACKGROUND**

Bcl-X is a member of the Bcl-2 family of proteins, which function as regulators of apoptosis. Bcl-X has two isoforms, Bcl-XI (long) a 241 amino acid protein and Bcl-Xs (short) a 178 amino acid protein lacking a 63 amino acid domain that is well conserved among members of the Bcl-2 family.

### **PURIFICATION**

The Rabbit IgG is purified by Epitope Affinity Purification

### **FORMULATION**

This affinity purified antibody is supplied in sterile Phosphatebuffered saline (pH7.2) containing antibody stabilizer

### **SPECIFICITY**

This antibody recognizes Bcl-X (short form and long form) of human and mouse origins.

### **STORAGE**

The antibodies are stable for 24 months from date of receipt when stored at  $-20^{\circ}\text{C}$  to  $-70^{\circ}\text{C}$ . The antibodies can be stored at  $2^{\circ}\text{C}$ - $8^{\circ}\text{C}$  for three month without detectable loss of activity. Avoid repeated freezing-thawing cycles.

### **APPLICATIONS/SUGGESTED WORKING DILUTIONS\***

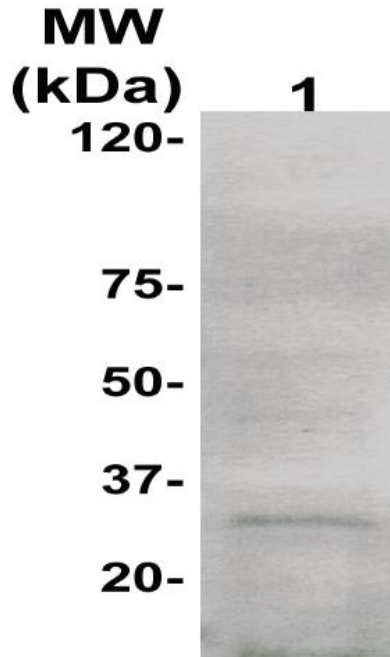
- Western Blot: 0.1-1  $\mu\text{g/ml}$
- ELISA: 0.01-0.1  $\mu\text{g/ml}$
- Immunoprecipitation: 2-5  $\mu\text{g/ml}$
- IHC: 2-10  $\mu\text{g/ml}$
- Flow cytometry: Not tested
- Molecular Weight: 27.0
- Positive Control: Kidney Tissue
- Cellular Location: Cell Membrane

\*Optimal dilutions should be determined by researchers for the specific applications.

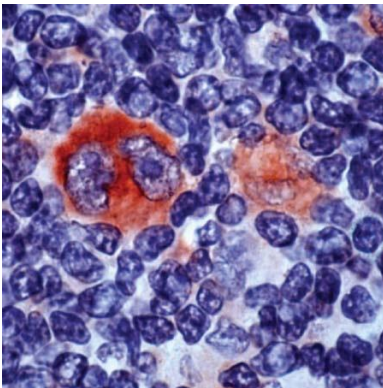
### **FOR RESEARCH USE ONLY.**

AbboMax, Inc 2528 Qume Drive, Suite 8, San Jose, California 95131, USA  
1 408-573-1898 (Tel). 1 408-573-1858 (Fax). [www.abbomax.com](http://www.abbomax.com) [info@abbomax.com](mailto:info@abbomax.com)

**DATA ATTACHMENTS**



Western Blot: The whole cell lysate derived from Raji cell was separated in 10% SDS-PAGE, transferred onto NC membrane, and immunoblotted by Rabbit anti - Bcl-X antibody (Cat#500-3374) at 1:500 . An immunoreactive band around ~27 kDa is observed.



Immunohistochemistry: Human Hodgkin's lymphoma stained with Anti-BCL-X antibody, (Cat# 500-3374) at 1:25 for 10 min @ RT. Staining of formalin-fixed cell requires boiling tissue sections in 10 mM Citrate Buffer, pH 6.0 for 10 min followed by cooling at RT for 20 min.

**REFERENCES**

**FOR RESEARCH USE ONLY.**