



Rabbit anti CD38 Polyclonal Antibody

Alternative Name(s): CD38 antigen

Order Information

- **Description:** CD38
- **Catalogue:** 500-3254
- **Lot:** See label
- **Size:** 100ug/200ul
- **Host:** Rabbit
- **Clone:** nan
- **Application:** IHC(P)
- **Reactivity:** Hu

ANTIGEN PREPARATION

A synthetic peptide corresponding to the C-terminus of CD38

BACKGROUND

CD38 is a 45 kD type II glycoprotein that acts both as a bifunctional enzyme, responsible for the synthesis and hydrolysis of cyclic ADP-ribose, and as a signal-transducing surface receptor. CD38 also functions in cell adhesion, and calcium signaling. Although CD38 was originally described as a plasma membrane molecule, several reports indicate that CD38 is expressed in the nucleus, even in cells known to be CD38 surface-negative. It is found on the surface of many immune cells (white blood cells), B-lymphocytes, epithelial cells and NK cells. Loss of CD38 function is associated with impaired immune responses, metabolic disturbances, and behavioral modifications in mice. CD38 is a powerful disease marker for human leukemias and myelomas, is directly involved in the pathogenesis and outcome of human immunodeficiency virus infection and chronic lymphocytic leukemia, and controls insulin release and the development of diabetes

PURIFICATION

The Rabbit IgG is purified by Epitope Affinity Purification

FORMULATION

This affinity purified antibody is supplied in sterile Phosphatebuffered saline (pH7.2) containing antibody stabilizer

SPECIFICITY

This antibody recognizes human CD38 . The other species not tested.

STORAGE

The antibodies are stable for 24 months from date of receipt when stored at -20°C to -70°C . The antibodies can be stored at 2°C - 8°C for three month without detectable loss of activity. Avoid repeated freezing-thawing cycles.

APPLICATIONS/SUGGESTED WORKING DILUTIONS*

- Western Blot: 0.1-1 $\mu\text{g/ml}$
- ELISA: 0.01-0.1 $\mu\text{g/ml}$
- Immunoprecipitation: 2-5 $\mu\text{g/ml}$
- IHC: 2-10 $\mu\text{g/ml}$
- Flow cytometry: Not tested
- Molecular Weight: 45.0
- Positive Control: Kidney Tissue
- Cellular Location: Cell Membrane

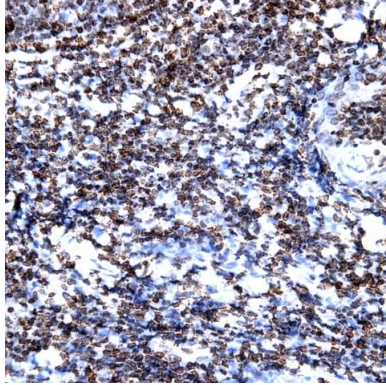
*Optimal dilutions should be determined by researchers for the specific applications.

FOR RESEARCH USE ONLY.

AbboMax, Inc 2528 Qume Drive, Suite 8, San Jose, California 95131, USA
1 408-573-1898 (Tel). 1 408-573-1858 (Fax). www.abbomax.com info@abbomax.com



DATA ATTACHMENTS



Immunohistochemistry: Human Tonsil (FFPE) stained with Rabbit anti-CD38 (Cat# 500-3254) at 1:200 for 10 min @ RT. Staining of formalin-fixed tissue requires boiling tissue sections in 10 mM Citrate Buffer, pH 6.0 for 10 min followed by cooling at RT for 20 min.

REFERENCES

FOR RESEARCH USE ONLY.

AbboMax, Inc 2528 Qume Drive, Suite 8, San Jose, California 95131, USA
1 408-573-1898 (Tel). 1 408-573-1858 (Fax). www.abbomax.com info@abbomax.com