



## Rabbit anti CD20 Polyclonal Antibody

Alternative Name(s): MS4A1, CD20, CD20 antigen, CD20 receptor, B-Lymphocyte cell-surface antigen B1

### Order Information

- **Description:** CD20
- **Catalogue:** 500-2564
- **Lot:** See label
- **Size:** 100ug/200ul
- **Host:** Rabbit
- **Clone:** nan
- **Application:** IHC(P), WB, IP
- **Reactivity:** Hu

### **ANTIGEN PREPARATION**

A synthetic peptide corresponding to C-terminus of human CD20 protein.

### **BACKGROUND**

CD20, a non-glycosylated protein, belongs to a member of the membrane-spanning 4A gene family. The molecular weight is at a range of ~34-37kDa depending on the degree of the protein phosphorylation. The CD20 antigen is present on human pre B lymphocytes and B lymphocytes at all stages of maturation. Thus, it plays an important role in the development and differentiation of B-cells into plasma cells. Low level of CD20 expression appears on normal T lymphocytes. Combination of chemo and humanized CD20 antibodies has been reported in clinical study of lymphoma diseases.

### **PURIFICATION**

The Rabbit IgG is purified by Epitope Affinity Purification

### **FORMULATION**

This affinity purified antibody is supplied in sterile Phosphatebuffered saline (pH7.2) containing antibody stabilizer

### **SPECIFICITY**

This antibody recognizes ~34 kDa of human CD20. The other species are not tested

### **STORAGE**

The antibodies are stable for 24 months from date of receipt when stored at -20oC to -70oC. The antibodies can be stored at 2oC-8oC for three month without detectable loss of activity. Avoid repeated freezing-thawing cycles.

### **APPLICATIONS/SUGGESTED WORKING DILUTIONS\***

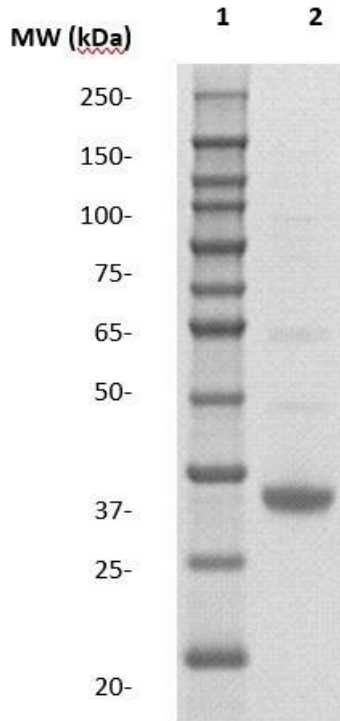
- Western Blot: 0.1-1 µg/ml
- ELISA: 0.01-0.1 µg/ml
- Immunoprecipitation: 2-5 µg/ml
- IHC: 2-10 µg/ml
- Flow cytometry: Not tested
- Molecular Weight: 34.0
- Positive Control: Kidney Tissue
- Cellular Location: Cell Membrane

\*Optimal dilutions should be determined by researchers for the specific applications.

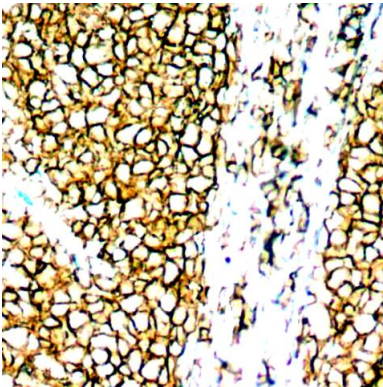
### **FOR RESEARCH USE ONLY.**

AbboMax, Inc 2528 Qume Drive, Suite 8, San Jose, California 95131, USA  
1 408-573-1898 (Tel). 1 408-573-1858 (Fax). [www.abbomax.com](http://www.abbomax.com) [info@abbomax.com](mailto:info@abbomax.com)

**DATA ATTACHMENTS**



Western Blot: The whole lysates derived from human spleen were immunoblotted by Rabbit anti-CD20 (Cat#500-2564) at 1:1000. Observed a major immunoreactive band at molecular weight ~34 kDa.



Immunohistochemistry: Human tonsil tissue (FFPE) was stained with Anti-CD20 antibody, (Cat# 500-2564) at 1:200 for 10 min @ RT. Staining of formalin-fixed tissue requires boiling tissue sections in 10 mM Citrate Buffer, pH 6.0 for 10 min followed by cooling at RT for 20 min.

**REFERENCES**

**FOR RESEARCH USE ONLY.**