



## **Rabbit anti CD25 Polyclonal Antibody**

**Alternative Name(s): IL2RA, Interleukin2 receptor alpha**

### **Order Information**

- **Description:** CD25
- **Catalogue:** 500-13564
- **Lot:** See label
- **Size:** 100ug/200ul
- **Host:** Rabbit
- **Clone:** nan
- **Application:** IHC(P), WB
- **Reactivity:** Hu

### **ANTIGEN PREPARATION**

Recombinant full length (1-272 aa) of human CD25.

### **BACKGROUND**

The IL2 receptor (IL2R) exists in three alternative forms made up from the individual components of CD25, CD122, and CD132. CD25 represents the low affinity alpha chain of the IL2R, a type I transmembrane glycoprotein containing two CCP domains. It is rich in O linked carbohydrates and has a short cytoplasmic tail. CD25 is expressed on activated T cells, B cells, NK cells and monocytes of all mouse strains tested. It is transiently expressed at a low level during B cell development in bone marrow on the CD45R/B220 low TdT- sIg- pre-B II and CD45R/B220low TdT- sIgM+sIgD- immature B cells, but not on the CD45R/B220 low TdT+ sIg- pro-B/pre B I stage nor on CD45R/B220high TdT- sIgM+sIgD+ mature B cells. CD25 is expressed at a higher level during very early T cell development in fetal and adult thymus. CD25 expression is a common denominator of a specific immunomodulatory B-cell subset ready to proliferate upon IL-2 stimulation.

### **PURIFICATION**

The Rabbit IgG is purified by Epitope Affinity Purification

### **FORMULATION**

This affinity purified antibody is supplied in sterile Phosphatebuffered saline (pH7.2) containing antibody stabilizer

### **SPECIFICITY**

This antibody reacts with human CD25. The other species are not tested.

### **STORAGE**

The antibodies are stable for 24 months from date of receipt when stored at -20oC to -70oC. The antibodies can be stored at 2oC-8oC for three month without detectable loss of activity. Avoid repeated freezing-thawing cycles.

### **APPLICATIONS/SUGGESTED WORKING DILUTIONS\***

- Western Blot: 0.1-1 µg/ml
- ELISA: 0.01-0.1 µg/ml
- Immunoprecipitation: 2-5 µg/ml
- IHC: 2-10 µg/ml
- Flow cytometry: Not tested
- Molecular Weight: 55.0
- Positive Control: Kidney Tissue
- Cellular Location: Cell Membrane

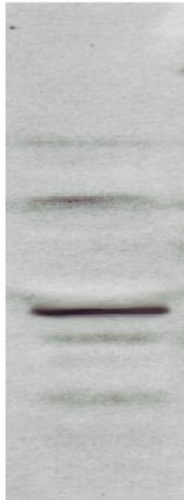
\*Optimal dilutions should be determined by researchers for the specific applications.

### **FOR RESEARCH USE ONLY.**

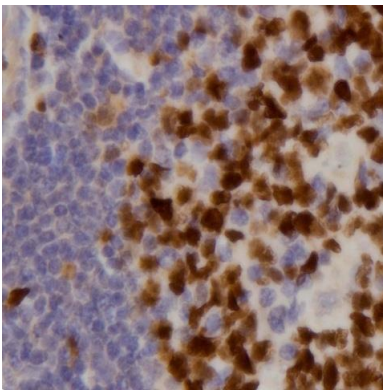
AbboMax, Inc 2528 Qume Drive, Suite 8, San Jose, California 95131, USA  
1 408-573-1898 (Tel). 1 408-573-1858 (Fax). [www.abbomax.com](http://www.abbomax.com) [info@abbomax.com](mailto:info@abbomax.com)

**DATA ATTACHMENTS**

**MW**  
**(kDa)**  
**150-**  
**100-**  
**50-**  
**20-**  
**10-**



Western Blot: The cell lysate derived from Jurkat cells was immunoblotted by the Rabbit anti CD25 (Cat#500-13564) @ 1:500. An immunoreactive band around ~31 kDa was observed.



Immunohistochemistry: Human Tonsil (FFPE) stained with Rabbit anti-CD25 (Cat# 500-13564) at 1:200 for 10 min @ RT. Staining of formalin-fixed tissue requires boiling tissue sections in 10 mM Citrate Buffer, pH 6.0 for 10 min followed by cooling at RT for 20 min.

**REFERENCES**

**FOR RESEARCH USE ONLY.**