



Rabbit anti CD154 Polyclonal Antibody

Alternative Name(s): CD154, CD40L, HIGM1, IGM, IMD3, T-BAM, TNFSF5, TRAP, gp39, hCD40L

Order Information

- **Description:** CD154
- **Catalogue:** 500-13554
- **Lot:** See label
- **Size:** 100ug/200ul
- **Host:** Rabbit
- **Clone:** nan
- **Application:** WB
- **Reactivity:** Hu

ANTIGEN PREPARATION

Synthetic peptide corresponding to aa 51-69 of human CD154.

BACKGROUND

CD154 / CD40 ligand (CD40L) is a 33 kDa type II membrane glycoprotein expressed mainly on the cell surface of activated T lymphocytes, but also exists as a soluble form extracellularly. CD40L is the ligand for CD40, a member of the TNF superfamily, which is expressed on the cell surface of B cells, macrophages/monocytes, dendritic cells, vascular endothelial cells, and epithelial cells. CD40L plays an important role in B cell proliferation, antibody class switching, modulation of apoptosis in the germinal center through interaction with B cells expressing CD40, and activation of CD4+ T cells. Mutation within the CD40L gene is linked to hyper IgM syndrome, an X linked immunodeficiency disease that is characterized by elevated level of serum IgM and decreased level of other isotypes.

PURIFICATION

The Rabbit IgG is purified by Epitope Affinity Purification

FORMULATION

This affinity purified antibody is supplied in sterile Phosphatebuffered saline (pH7.2) containing antibody stabilizer

SPECIFICITY

This antibody reacts with human CD154. The other species are not tested.

STORAGE

The antibodies are stable for 24 months from date of receipt when stored at -20°C to -70°C . The antibodies can be stored at 2°C - 8°C for three month without detectable loss of activity. Avoid repeated freezing-thawing cycles.

APPLICATIONS/SUGGESTED WORKING DILUTIONS*

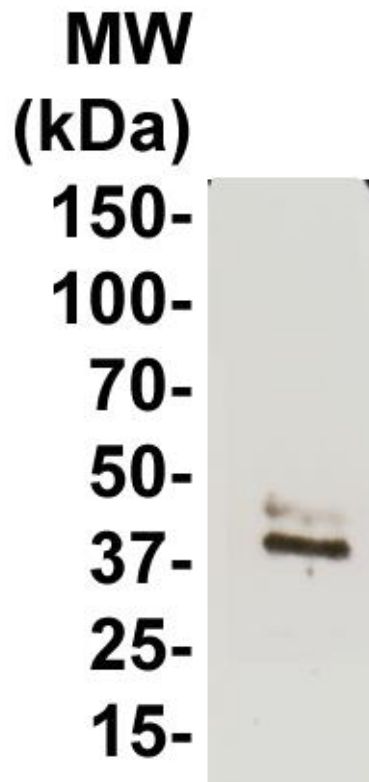
- Western Blot: 0.1-1 $\mu\text{g/ml}$
- ELISA: 0.01-0.1 $\mu\text{g/ml}$
- Immunoprecipitation: 2-5 $\mu\text{g/ml}$
- IHC: 2-10 $\mu\text{g/ml}$
- Flow cytometry: Not tested
- Molecular Weight: 33.0
- Positive Control: Kidney Tissue
- Cellular Location: Cell Membrane

*Optimal dilutions should be determined by researchers for the specific applications.

FOR RESEARCH USE ONLY.

AbboMax, Inc 2528 Qume Drive, Suite 8, San Jose, California 95131, USA
1 408-573-1898 (Tel). 1 408-573-1858 (Fax). www.abbomax.com info@abbomax.com

DATA ATTACHMENTS



Western Blot: The cell lysate derived from Raji cells was immunoblotted by the Rabbit anti CD154 (Cat#500-13554) @ 1:500. An immunoreactive band around ~33 kDa was observed.

REFERENCES

FOR RESEARCH USE ONLY.