



Rabbit anti CCR10 Polyclonal Antibody

Alternative Name(s): Chemokine (C-C motif) receptor 10

Order Information

- **Description:** CCR10
- **Catalogue:** 500-13544
- **Lot:** See label
- **Size:** 100ug/200ul
- **Host:** Rabbit
- **Clone:** nan
- **Application:** WB
- **Reactivity:** Hu

ANTIGEN PREPARATION

Synthetic peptide corresponding to N-terminal of human CCR10.

BACKGROUND

Receptors for the CC chemokine family include CCR1, CCR2A, CCR3, CCR4, CCR5 and the Duffy blood group antigen. The CC receptors are important in the function of T cell chemotaxis and migration of phagocytic cells to sites of inflammation. CCR10 in particular is the receptor for the skin-associated CC chemokine CCL27 (CTACK) as well as the novel chemokine CCL28 which displays chemotactic activity for resting CD4+ and CD8+ T cells. Receptors for the C-C chemokine family include CCR-1, CCR-2A, CCR-3, CCR-4, CCR-5 and the Duffy blood group antigen. The C-C receptors are important in the function of T cell chemotaxis and migration of phagocytic cells to sites of inflammation. CCR10 in particular is the receptor for the skin-associated CC chemokine CCL27 (CTACK) as well as the novel chemokine CCL28 which displays chemotactic activity for resting CD4+ and CD8+ T cells.

PURIFICATION

The Rabbit IgG is purified by Epitope Affinity Purification

FORMULATION

This affinity purified antibody is supplied in sterile Phosphatebuffered saline (pH7.2) containing antibody stabilizer

SPECIFICITY

This antibody reacts with human CCR10. The other species are not tested.

STORAGE

The antibodies are stable for 24 months from date of receipt when stored at -20oC to -70oC. The antibodies can be stored at 2oC-8oC for three month without detectable loss of activity. Avoid repeated freezing-thawing cycles.

APPLICATIONS/SUGGESTED WORKING DILUTIONS*

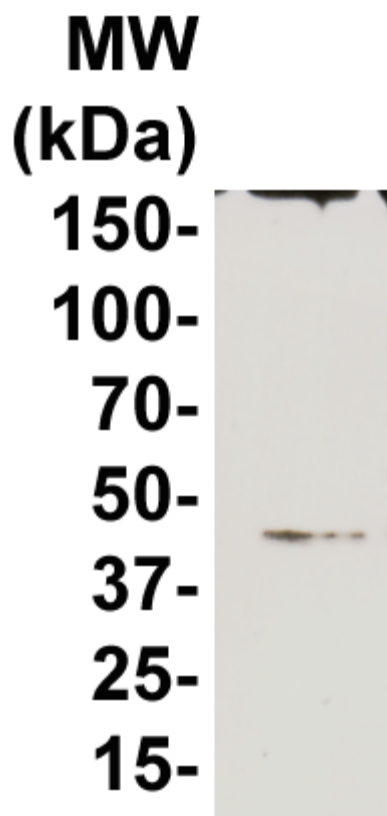
- Western Blot: 0.1-1 µg/ml
- ELISA: 0.01-0.1 µg/ml
- Immunoprecipitation: 2-5 µg/ml
- IHC: 2-10 µg/ml
- Flow cytometry: Not tested
- Molecular Weight: 40.0
- Positive Control: Kidney Tissue
- Cellular Location: Cell Membrane

*Optimal dilutions should be determined by researchers for the specific applications.

FOR RESEARCH USE ONLY.

AbboMax, Inc 2528 Qume Drive, Suite 8, San Jose, California 95131, USA
1 408-573-1898 (Tel). 1 408-573-1858 (Fax). www.abbomax.com info@abbomax.com

DATA ATTACHMENTS



Western Blot: The cell lysate derived from U118 cells was immunoblotted by the Rabbit anti CCR10 (Cat#500-13544) @ 1:500. An immunoreactive band around ~40 kDa was observed.

REFERENCES

FOR RESEARCH USE ONLY.