



## **Rabbit anti STAT4(pY693) Polyclonal Antibody**

**Alternative Name(s):** Signal transducer and activator of transcription 4 (STAT4)

### **Order Information**

- **Description:** STAT4(pY693)
- **Catalogue:** 500-12064
- **Lot:** See label
- **Size:** 100ug/200ul
- **Host:** Rabbit
- **Clone:** nan
- **Application:** IHC(P), WB, IP
- **Reactivity:** Hu, Ms

### **ANTIGEN PREPARATION**

A synthetic peptide surrounding the epitope -KGYVP-- with phosphorylation sites at Tyr693 of STAT4 protein from human, mouse, rat, chicken dog and bovine origins.

### **BACKGROUND**

STAT proteins (Signal transducer and activator of transcription) belong to a family of cytoplasmic transcription factors that can be phosphorylated by a ligand binding to its cell surface receptor. Activation of STAT4 induces dimerization, nuclear translocation and DNA binding. STAT4 protein expression is restricted to the thymus, spleen and testis. Both tyrosine and serine residues on STAT4 become phosphorylated in response to IL-12 or IFN- $\alpha$  although serine phosphorylation is not required for DNA binding. STAT4 is activated in T-cells in response to the cytokine interleukin-12 (IL-12), and in NK cells by IL-2. STAT4-deficient mice display impaired IL-12 development of Th1 cells and enhanced development of Th2 cells.

### **PURIFICATION**

The Rabbit IgG is purified by site-modified Epitope Affinity Purification.

### **FORMULATION**

This affinity purified antibody is supplied in sterile Tris-buffered saline (pH7.2) containing antibody stabilizer

### **SPECIFICITY**

This antibody recognizes STAT4 (pY693) with a phosphorylated sites of Tyr693. It does not cross-react with non-phosphospecific peptide.

### **STORAGE**

The antibodies are stable for 24 months from date of receipt when stored at -20°C to -70°C. The antibodies can be stored at 2°C-8°C for three month without detectable loss of activity. Avoid repeated freezing-thawing cycles.

### **APPLICATIONS/SUGGESTED WORKING DILUTIONS\***

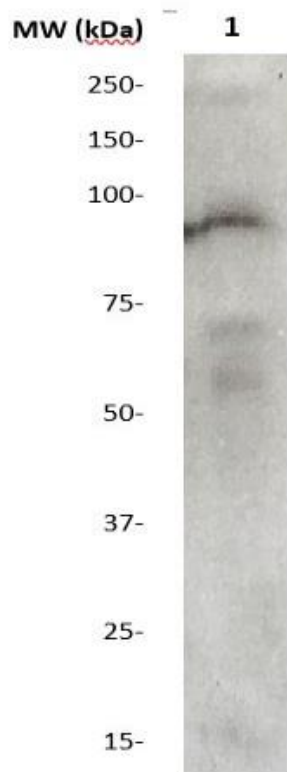
- Western Blot: 0.1-1  $\mu$ g/ml
- ELISA: 0.01-0.1  $\mu$ g/ml
- Immunoprecipitation: 2-5  $\mu$ g/ml
- IHC: 2-10  $\mu$ g/ml
- Flow cytometry: Not tested
- Molecular Weight: 90.0
- Positive Control: Kidney Tissue
- Cellular Location: Cell Membrane

\*Optimal dilutions should be determined by researchers for the specific applications.

### **FOR RESEARCH USE ONLY.**

AbboMax, Inc 2528 Qume Drive, Suite 8, San Jose, California 95131, USA  
1 408-573-1898 (Tel). 1 408-573-1858 (Fax). [www.abbomax.com](http://www.abbomax.com) [info@abbomax.com](mailto:info@abbomax.com)

## DATA ATTACHMENTS



Western Blot: The whole tissue lysate derived from mouse kidney was immunoblotted by Rabbit anti STAT4 (pY694) (Cat#500-12064) antibody at 1:500. Observed a major immunoreactive band at molecular weight ~90kDa.

## REFERENCES

### FOR RESEARCH USE ONLY.

AbboMax, Inc 2528 Qume Drive, Suite 8, San Jose, California 95131, USA  
1 408-573-1898 (Tel). 1 408-573-1858 (Fax). [www.abbomax.com](http://www.abbomax.com) [info@abbomax.com](mailto:info@abbomax.com)