



Rabbit anti GATA1(pS142) Polyclonal Antibody

Alternative Name(s): GATA binding protein 1; globin transcription factor 1;

Order Information

- **Description:** GATA1(pS142)
- **Catalogue:** 500-11714
- **Lot:** See label
- **Size:** 100ug/200ul
- **Host:** Rabbit
- **Clone:** nan
- **Application:** IHC(P), WB
- **Reactivity:** Hu, Ms

ANTIGEN PREPARATION

A synthetic phosphor-peptide –TLKTERLSPDLLTLG corresponding to residues surrounding Ser142 of human GATA1. It is identical among human, mouse and rat species.

BACKGROUND

GATA1 belongs to the GATA family of transcription factors. The proteins comprise a group of transcription factors that are related by the presence of conserved zinc finger DNA binding domains, which bind directly to the nucleotide sequence core element GATA. There are six vertebrate GATA proteins, designated GATA-1 to GATA-6. GATA-1 is the founding member of the GATA family and is required for erythroid and megakaryocytic cell development by regulating the switch of fetal hemoglobin to adult hemoglobin. Mutations in GATA-1 have been linked to many human diseases, including acute megakaryoblastic leukemia in Down syndrome children (DS-AMKL), X-linked thrombocytopenia, and gray platelet syndrome.

PURIFICATION

The Rabbit IgG is purified by site-modified Epitope Affinity Purification.

FORMULATION

This affinity purified antibody is supplied in sterile Tris-buffered saline (pH7.2) containing antibody stabilizer

SPECIFICITY

This antibody recognizes GATA1 with the phosphorylation site Ser142. It does not cross-react with non-phosphospecific peptide.

STORAGE

The antibodies are stable for 24 months from date of receipt when stored at –20oC to –70oC. The antibodies can be stored at 2oC-8oC for three month without detectable loss of activity. Avoid repeated freezing-thawing cycles.

APPLICATIONS/SUGGESTED WORKING DILUTIONS*

- Western Blot: 0.1-1 µg/ml
- ELISA: 0.01-0.1 µg/ml
- Immunoprecipitation: 2-5 µg/ml
- IHC: 2-10 µg/ml
- Flow cytometry: Not tested
- Molecular Weight: 43.0
- Positive Control: Kidney Tissue
- Cellular Location: Cell Membrane

FOR RESEARCH USE ONLY.

AbboMax, Inc 2528 Qume Drive, Suite 8, San Jose, California 95131, USA
1 408-573-1898 (Tel). 1 408-573-1858 (Fax). www.abbomax.com info@abbomax.com

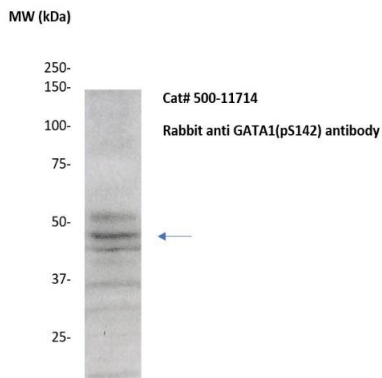


*Optimal dilutions should be determined by researchers for the specific applications.

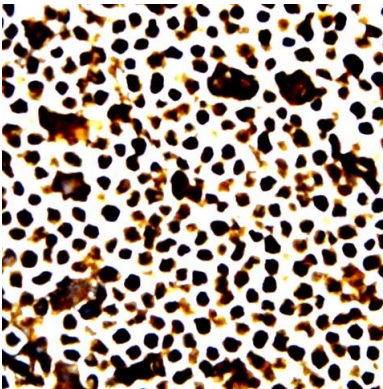
FOR RESEARCH USE ONLY.

AbboMax, Inc 2528 Qume Drive, Suite 8, San Jose, California 95131, USA
1 408-573-1898 (Tel). 1 408-573-1858 (Fax). www.abbomax.com info@abbomax.com

DATA ATTACHMENTS



Western Blot: The whole cell lysates derived from K562 were immunoblotted by Rabbit anti-GATA1 (pS142) (Cat#500-11714) at 1:500. The immunoreactive band is observed around ~45 kDa.



Immunohistochemistry: The whole cell pallet K562 (FFPE) stained with Rabbit anti-GATA1(pS142) (Cat# 500-11714) at 1:200 for 10 min @ RT. Staining of formalin-fixed tissue requires boiling tissue sections in 10 mM Citrate Buffer, pH 6.0 for 10 min followed by cooling at RT for 20 min.

REFERENCES

FOR RESEARCH USE ONLY.