



Rabbit anti CD72 Polyclonal Antibody

Alternative Name(s): B-cell differentiation antigen CD72; CD72 antigen

Order Information

- **Description:** CD72
- **Catalogue:** 500-10924
- **Lot:** See label
- **Size:** 100ug/200ul
- **Host:** Rabbit
- **Clone:** nan
- **Application:** WB
- **Reactivity:** Hu

ANTIGEN PREPARATION

A synthetic peptide corresponding to N-term of human CD72 protein. This sequence is identical to mouse and rat.

BACKGROUND

CD72 antigen is a member of the type II integral membrane glycoproteins which includes other related cell surface molecules such as the asialoglycoprotein receptors, CD23 and the Kupffer cell receptor. The function of CD72 is unknown but the exposure of B cells to CD72 antibodies activates a variety of signaling pathways and can induce MHC class II expression and B cell proliferation. CD72 antigen is expressed on all cells of B cell lineage with the exception of plasma cells and weakly on human tissue macrophages.

PURIFICATION

The Rabbit IgG is purified by Epitope Affinity Purification

FORMULATION

This affinity purified antibody is supplied in sterile Phosphatebuffered saline (pH7.2) containing antibody stabilizer

SPECIFICITY

This antibody reacts with human CD72. The other species are not tested.

STORAGE

The antibodies are stable for 24 months from date of receipt when stored at -20°C to -70°C . The antibodies can be stored at 2°C - 8°C for three months without detectable loss of activity. Avoid repeated freezing-thawing cycles.

APPLICATIONS/SUGGESTED WORKING DILUTIONS*

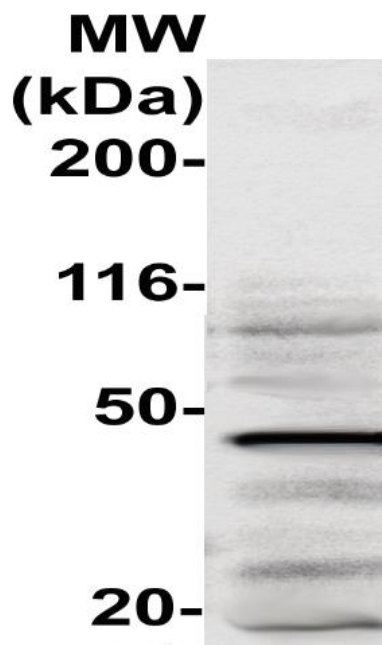
- Western Blot: 0.1-1 $\mu\text{g/ml}$
- ELISA: 0.01-0.1 $\mu\text{g/ml}$
- Immunoprecipitation: 2-5 $\mu\text{g/ml}$
- IHC: 2-10 $\mu\text{g/ml}$
- Flow cytometry: Not tested
- Molecular Weight: 40.2
- Positive Control: Kidney Tissue
- Cellular Location: Cell Membrane

*Optimal dilutions should be determined by researchers for the specific applications.

FOR RESEARCH USE ONLY.

AbboMax, Inc 2528 Qume Drive, Suite 8, San Jose, California 95131, USA
1 408-573-1898 (Tel). 1 408-573-1858 (Fax). www.abbomax.com info@abbomax.com

DATA ATTACHMENTS



Western Blot: The cell lysate derived from Raji was immunoblotted by the Rabbit anti CD72 (Cat#500-10924) @ 1:500. An immunoreactive bands was observed around 45kDa.

REFERENCES

FOR RESEARCH USE ONLY.