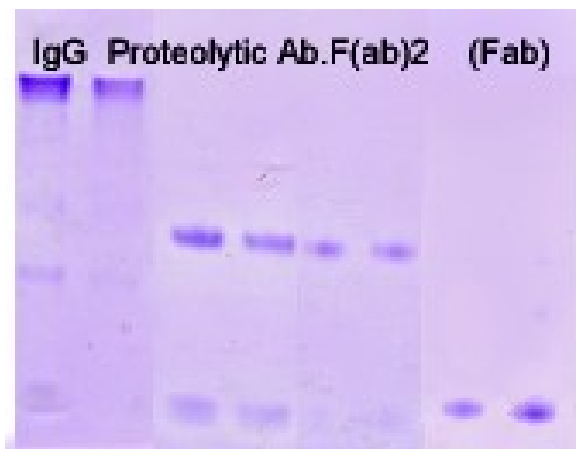




Ab^{Max} Antibody Fab Fragmentation (Cat# 60011ab1) **Ab^{Max} Antibody F(ab)₂ Fragmentation (Cat# 60011ab2)**

To avoid antigen capping and internalization, antibody fragmentation is usually employed. In the antibody proteolytic fragmentation service, we provide the following items:

- ❖ The outline of antibody fragmentation process
- ❖ Antibody concentration and purity
- ❖ Results confirmed on electrophoresis.



Note: Site

Antibodies are powerful tools for protein and molecular detection and purification. Although whole **antibodies** (usually **IgG** or IgM) are ideal for most immunoassay applications, the performances of certain procedures are enhanced by using **antibody fragments**, such as Fab and F(ab')₂.

-specific modification includes phosphorylation, methylation, acetylation, glycosylation, etc. It is most important for research. We will make sure by quality control data that you will get the modification specific antibody at your request. Feel free to contact us if you have any questions: info@abbomax.com.