

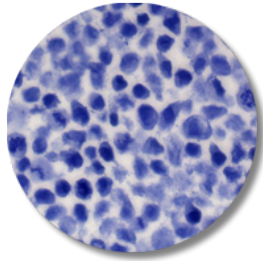
# New Products 2021



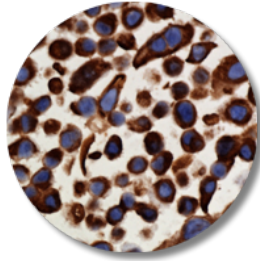
## CONTENTS

CellMax™ FFPE Cell Pellet Slide - The Ultimate Control for IHC and ISH.....	2
TissueMax™ FFPE Tissue Slides .....	4
AbboMax™ Universal Polymer Detection System.....	5
EpiMax™ Epitope Mapping -The Fast Way to Map Epitope.....	5
Monoclonal Antibodies.....	6_20
Polyclonal Antibody.....	21_44
Immunohistochemistry (IHC).....	45
Phosphospecific Antibodies.....	47
Secondary Antibodies .....	48-50
General Information .....	51

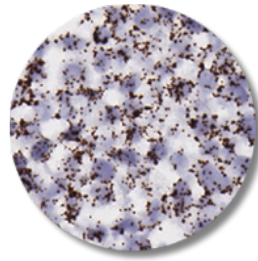
## CellMax™ FFPE Cell Pellet Slides - The Most Consistent Control Samples



Hematoxylin Stain



Immunohistochemistry (IHC)



RNA *in situ* Hybridization (by RNAscope technology)

### Broad Applications

The CellMax cell pellet slides are ideal samples for assay development as well as test controls for a variety of applications, such as Immunohistochemistry (IHC) and *in situ* Hybridization (ISH)

### Versatility

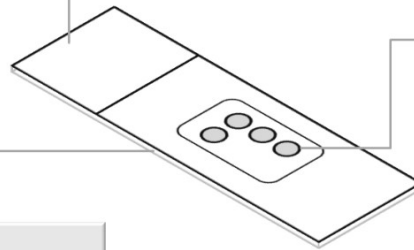
- Custom cell lines
- Custom fixation protocols
- Custom cell densities
- Mixed cell line blocks
- Custom cell line arrays

### Quality

- Strictly controlled fixation
- Homogeneous distribution
- Whole block consistency
- Lot-to-lot consistency

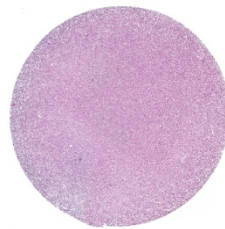
### Economical

- As low as **\$5** per slide



### Consistency and Uniformity

The CellMax cell pellets are produced using a patent-pending process, which generates highly consistent density and homogeneity across the entire cell pellet block.



Section #1



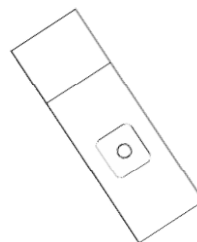
Section #200



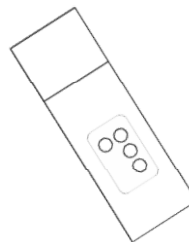
Section #400

### Versatile Formats

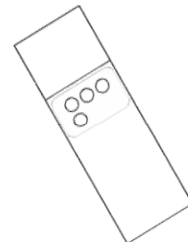
The CellMax cell pellet products are available in a variety of formats to best fit your applications.



Single Pellet Slide



Cell Pellet Array



On-slide-control



FFPE Scroll

## CellMax™ FFPE Cell Pellet Slides - Catalog

Cell Line	Catalog Number	Cell Line	Catalog Number	Cell Line	Catalog Number
<b>Breast</b>		<b>Prostate</b>		<b>Ovary</b>	
SKBR3	T210101	PC3	T210401	OVCAR8	T210801
MCF7	T210102	DU145	T210402	IGROV1	T210802
MDA-MB-231	T210103	22RV1	T210403	<b>Kidney</b>	
MDA-MB-468	T210104	<b>Colorectal</b>		SN12C	T210901
BT474	T210105	SW620	T210501	TK10	T210902
T47D	T210106	HT29	T210502	786-O	T210903
MDA-MB-453	T210107	HCC2998	T210503	<b>Liver</b>	
<b>Lung</b>		LS174T	T210504	HEPG2	T211001
H2228	T210201	COLO205	T210505	HUH7	T211002
H23	T210202	HCT116	T210506	<b>Pancreas</b>	
A549	T210203	<b>Skin</b>		BXPC3	T211101
HOP62	T210205	SK-MEL-2	T210601	MIAPACA2	T211102
H322	T210206	SK-MEL-5	T210602	PANC1	T211103
H1703	T210207	M14	T210603	PSN1	T211104
H1975	T210208	CHL-1	T210605	<b>Brain</b>	
H838	T210209	SK-MEL-28	T210606	U118MG	T211201
SKMES1	T210210	C32	T210608	<b>Others</b>	
HOP92	T210211	HT144	T210609	HEK293	T214001
H596	T210214	<b>Leukemia and Lymphoma</b>		3T3	T214002
H1650	T210215	K562	T210701	<b>Custom FFPE Cell Line Blocks and Sections</b>	
SW1573	T210216	JURKAT	T210702	Custom Cell Lines and Pellets	T71001
<b>Cervical</b>		RAJI	T210703	<b>Multi-Cell Line Arrays</b>	
HELA	T210301	SUDHL1	T210705	Custom Multi-Cell Line Arrays	T71001
CASKI	T210302	SUDHL4	T210706		
SIHA	T210303	HUT78	T210707		
C33A	T210304	CCRF-CEM	T210708		

OEM Price: [Inquire](#)

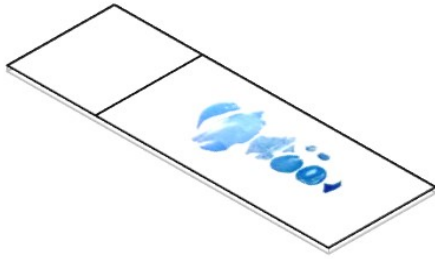
[info@abbomax.com](mailto:info@abbomax.com)

### Standard Preparation (Custom preparation services are available)

Fixation:	10% Neutral Buffered Formalin for 48 hours at 25-27°C
Embedding:	Paraffin
Section Thickness:	5µm
Slide Type:	Superfrost Plus



# TissueMax™ FFPE Tissue Slides - Convenient Tools for Assay Development



## Convenience and High throughput

- High quality FFPE tissue slides
- Strictly controlled preparation protocol to ensure lot-to-lot consistency
- Available in large quantities
- Economical pricing
- Custom tissues or tissue arrays available

### Mouse Tissue Catalog

Tissue	Catalog Number	Tissue	Catalog Number	Tissue	Catalog Number
Brain (coronal)	T219001	Intestine (Ileum)	T219007	Mouse Multi-tissue FFPE section (Brain, Colon, Heart, Intestine, Kidney, Liver, Lung, Spleen)	T219101
Brain (Sagittal)	T219002	Kidney	T219008		
Colon	T219003	Liver	T219009		
Heart	T219004	Lymph Node	T219010		
Intestine (Duodenum)	T219005	Lung	T219011		
Intestine (Jejunum)	T219006	Pancreas	T219012	Custom Tissues or Tissue Arrays	T71001
		Stomach	T219013		
		Spleen	T219014		

### Rat Tissue Catalog

Tissue	Catalog Number	Tissue	Catalog Number	Tissue	Catalog Number
Brain (coronal)	T218001	Intestine (Ileum)	T218007	Custom Tissues or Tissue Arrays	T71001
Brain (Sagittal)	T218002	Kidney	T218008		
Colon	T218003	Liver	T218009		
Heart	T218004	Lymph Node	T218010		
Intestine (Duodenum)	T218005	Lung	T218011		
Intestine (Jejunum)	T218006	Pancreas	T218012		
		Stomach	T218013		
		Spleen	T218014		

OEM Price: [Inquire](#) [info@abbomax.com](mailto:info@abbomax.com)

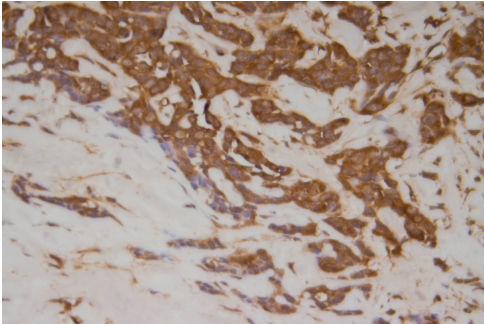
### Standard Preparation (Custom preparation services are available)

Fixation:	10% Neutral Buffered Formalin for 24 hours at 25-27°C
Embedding:	Paraffin
Section Thickness:	5µm
Slide Type:	Superfrost Plus

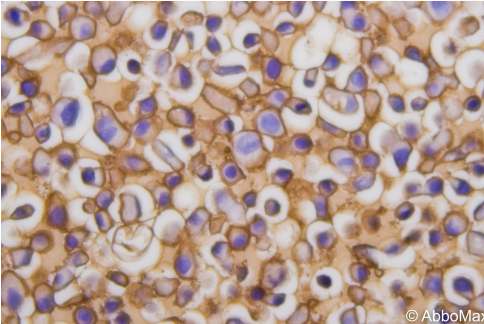


## UniMAX™ Universal Polymer Detection System (#800-810)

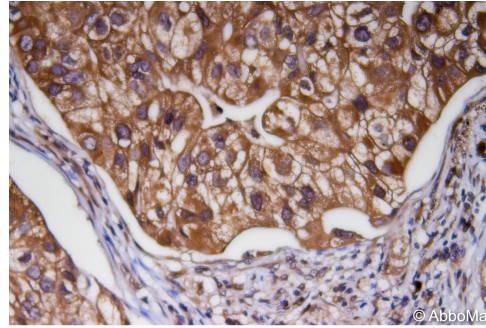
- Unique biotin-free universal polymer
- Superior antigen retrieval
- Unsurpassed specificity and sensitivity



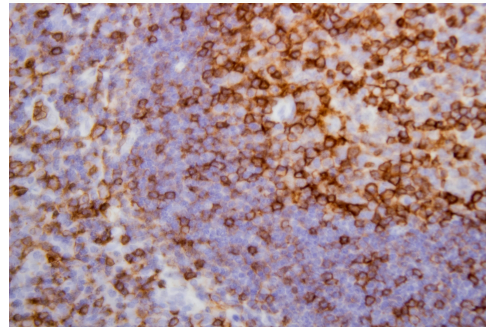
Breast cancer was stained with Mouse anti-Beta Tubulin III (Cat# 603-100) at 1:800 dilution



SKBR-3 cell pellet was stained with Rabbit anti EGFR(pY1092) at a dilution 1:100



Adenocarcinoma was stained with Mouse anti IRAK4(pT345) monoclonal antibody at 1:200

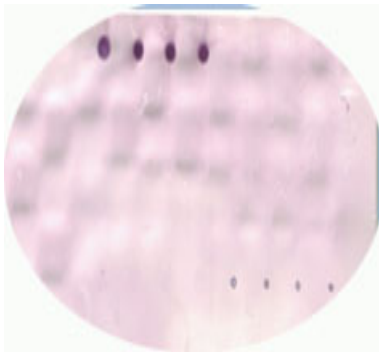


Tonsil tissue was stained with Mouse anti CD43 monoclonal antibody at 1:800

- Great primary antibody dilutions
- Minimal background staining

## EpiMax™ Epitope Mapping-The Fast Way to Map Epitope (#60020)

Epitope mapping is an important tool to identify and characterize the antibody binding site, especially vast majority of the therapeutic antibodies are . AbboMax offers a propriety technology to identify exact epitope to where the antibody interacts with protein/antigen by using peptides library construction and immunoassay methods.



- Epitope Mapping by constructed peptide library
- Immunoassay for all epitopes
- Data Report



## Monoclonal Antibodies - Catalog

In AbboMax, we translate our long experience into high-quality products and services; continuously build on our products as a supplier in life science. AbboMax monoclonal antibodies are optimized for maximum ratio of the specific signal vs. non-specific background. These concentrated antibodies are provided with recommended dilutions for optimal use with AbboMax Universal Polymer Detection System (#800-810), allowing rapid titration and testing.

Description	Catalogue	Host	Isotyping	Clone	Size	Application	Cross Reactivity	Price
4E-BP1	604-010	Mouse	IgG1	554R16	100 ug	WB; IHC	Hu, Ms	\$ 245.00
A2B5	604-020	Mouse	IgM	105	100 ug	FC, IHC	Hu, Rt, Ms	\$ 245.00
Acetyl-CoA Carboxylase (ACC)	604-030	Mouse	IgG1	143	100 ug	ELISA, IF, IP, WB; IHC	Hu	\$ 245.00
Actin, Muscle Specific	500-4774	Mouse	IgG1	HHF35	100 ug	IHC-P, IF	Hu, Ms, Rt	\$ 219.00
AID	604-040	Mouse	IgG1/k	ZY201	100 ug	WB, IHC-P, IF, IP	Hu	\$ 245.00
Alkaline Phosphatase (AP)	500-7044	Mouse	IgG1	V17.1	100 ug	WB, IHC, ELISA	Hu	\$ 239.00
Alpha Fetoprotein(AFP)	500-6624	Mouse	IgG1	ABM334	100 ug	ELISA, WB, IHC, FC	Hu	\$ 189.00
Alpha Fetoprotein(AFP)	603-010	Mouse	IgG1	ABM001	100 ug	ELISA, WB, IHC, FC	Hu	\$ 189.00
AMACR	606-440	Mouse	IgG1	ZA003	100 ug	IHC-P, WB	Hu	\$ 245.00
Amyloid beta	604-060	Mouse	IgG1/k	7N22	100 ug	WB, ELISA	Hu	\$ 245.00
Androgen Receptor (AR)	500-6634	Mouse	IgG1	ABM335	100 ug	IHC-P, IF	Hu, Ms, Rt, Ck	\$ 245.00
Annexin 7	605-500	Mouse	IgG1	ZA004	100 ug	IHC(P), FC	Hu	\$ 245.00
ATF2	604-070	Mouse	IgG1	ZY173	100 ug	IHC	Hu	\$ 245.00
Aurora A Kinase	604-080	Mouse	IgG1/k	ZY191	100 ug	ELISA, IP, WB	Hu, Ms	\$ 245.00
AXL	604-420	Mouse	IgG1	10E7.1D2	100 ug	IHC(P), FC	Hu	\$ 245.00
B7H4(VTCN1)	604-720	Mouse	IgG1	ZY346	100 ug	IHC(P), FC	Hu	\$ 245.00
BAX	604-090	Mouse	IgG1	ZY455	100 ug	WB, E, IP	Ms, Rt	\$ 245.00
BAX(Ms)	604-091	Mouse	IgG1	ZY456	100 ug	WB, E, IP	Ms, Rt	\$ 245.00
BCL-2	605-360	Mouse	IgG1	ZY341	100 ug	IHC(P), FC	Hu	\$ 245.00
Bcl-2a	500-1124	Mouse	IgG1	100	100 ug	IHC(P), WB, IP, IF, FC	Hu	\$ 245.00
BCL-6	605-510	Mouse	IgG1	ZY510	100 ug	IHC(P), FC	Hu	\$ 245.00
BCL-X	605-520	Mouse	IgG1	ZY214	100 ug	IHC(P), FC	Hu	\$ 245.00
BCL-XL	605-530	Mouse	IgG1	ZY457	100 ug	IHC(P), FC	Hu	\$ 245.00

Description	Catalogue	Host	Isotyping	Clone	Size	Application	Cross Reactivity	Price
Beta-Tubulin III	603-100	Mouse	IgG2b	3D10	100 ug	WB, IHC	Hu	\$ 245.00
Beta-Tubulin IV	603-110	Mouse	IgG1	ABM871	100 ug	WB, IHC	Hu	\$ 245.00
Biotin	604-100	Mouse	IgG1	Z021	100 ug	Fc	all species	\$ 245.00
Biotin	500-7124	Mouse	IgG1	3D6	100 ug	WB, FC	All species	\$ 199.00
B-raf	604-110	Mouse	IgG1/k	ZY190	100 ug	WB, WB, ELISA, FC; IHC	Hu	\$ 245.00
BRCA1	603-930	Mouse	IgG1	MS110	100 ug	IHC, WB	Hu	\$ 245.00
Bromodeoxyuridine (BrdU)	500-4844	Mouse	IgG1	Bu20a	100 ug	IHC-P, IF	All species	\$ 245.00
c-Abl	500-6564	Mouse	IgG1	ABM328	100 ug	WB, IP, IHC-P, IF	Hu, Ms	\$ 245.00
Cadherine 17	605-560	Mouse	IgG1	1H3	100 ug	IHC(P), FC	Hu	\$ 245.00
Cadherin-Ksp	604-790	Mouse	IgG1	ZY161	100 ug	IHC(P), FC	Hu, Ms, Rt	\$ 245.00
Catenin beta	605-540	Mouse	IgG1	ZY480	100 ug	IHC(P), FC	Hu	\$ 245.00
Catenin-gamma	606-420	Mouse	IgG1	11E4	100 ug	IHC(P), FC	Hu	\$ 245.00
CCR2	603-850	Mouse	Mouse IgG2a	1D9	100 ug	IHC	Hu	\$ 245.00
CCR9	603-860	Mouse	Mouse IgG2b	3C3	100 ug	IHC	Hu	\$ 245.00
CD1a	500-1214	Mouse	IgG1	OKT6	100 ug	IHC(P)	Hu	\$ 245.00
CD1a	605-260	Mouse	IgG1	HI149	100 ug	IHC(P), FC	Hu	\$ 245.00
CD2	605-270	Mouse	IgG1	RPA-2.10	100 ug	IHC(P), FC	Hu	\$ 245.00
CD3	604-550	Mouse	IgG1	SK7	100 ug	IHC(P), FC	Hu	\$ 245.00
CD3	604-551	Mouse	IgG1	S4.1	100 ug	IHC(P), FC	Hu	\$ 245.00
CD3	604-552	Mouse	IgG1	UCHT-1	100 ug	IHC(P), FC	Hu	\$ 245.00
CD3e (HAM)	604-560	Hamster	IgG1	145-2C11	100 ug	IHC(P), FC	Hu	\$ 245.00
CD4	603-040	Mouse	IgG2a	S3.5	100 ug	IHC(P), FC	Hu	\$ 245.00
CD4	603-041	Mouse	IgG1	SK3	100 ug	IHC(P), FC	Hu	\$ 245.00
CD5	604-460	Mouse	IgG1	ZY405	100 ug	IHC(P), FC	Hu	\$ 245.00
CD5	605-430	Mouse	IgG1	UCHT2	100 ug	IHC(P), FC	Hu	\$ 245.00
CD7	605-460	Mouse	IgG1	H1T7	100 ug	IHC(P), FC	Hu	\$ 245.00



Description	Catalogue	Host	Isotyping	Clone	Size	Application	Cross Reactivity	Price
CD8	603-060	Mouse	IgG2a	3B5	100 ug	IHC(P), FC	Hu	\$ 245.00
CD8	603-061	Mouse	IgG1	SK1	100 ug	IHC(P), FC	Hu	\$ 245.00
CD8 (Ms)	603-062	Rat	Rat IgG2b	5H10	100 ug	IHC(P), FC	Hu	\$ 245.00
CD9	605-470	Mouse	IgG1	HI9a	100 ug	IHC(P), FC	Hu	\$ 245.00
CD10	605-160	Mouse	IgG1	HI10A	100 ug	IHC(P), FC	Hu	\$ 245.00
CD11a	605-170	Mouse	IgG2a	ZY120	100 ug	IHC(P), FC	Hu	\$ 245.00
CD11b	605-180	Mouse	IgG1	ICRF44/VIM-12	100 ug	IHC(P), FC	Hu	\$ 245.00
CD11b	605-181	Mouse	IgG1	VIM-12	100 ug	IHC(P), FC	Hu	\$ 245.00
CD11c	605-190	Mouse	IgG1	3.9	100 ug	IHC(P), FC	Hu	\$ 245.00
CD13	605-220	Mouse	IgG1	WM15	100 ug	IHC(P), FC	Hu	\$ 245.00
CD14	603-780	Mouse	IgG1	HCD14-61D3	100 ug	ELISA, IP, FC, IHC	Hu	\$ 245.00
CD15	500-1204	Mouse	IgM	ABM119	100 ug	IHC	Hu	\$ 199.00
CD15/SSEA-1	604-590	Mouse	IgM	MMA	100 ug	IHC(P), FC	Hu	\$ 245.00
CD16	605-230	Mouse	IgG1	3G8	100 ug	IHC(P), FC	Hu	\$ 245.00
CD19	604-160	Mouse	IgG1	SJ25C1	100 ug	FC,IF	HU	\$ 245.00
CD20	500-11214	Mouse	IgG2a	C273	100 ug	IHC-P	Hu	\$ 245.00
CD20	605-370	Mouse	IgG2a	13.6E12	100 ug	IHC(P), FC	Hu	\$ 245.00
CD20	605-380	Mouse	IgG1	2H7	100 ug	IHC(P), FC	Hu	\$ 245.00
CD20	605-381	Mouse	IgG1	ZY492	100 ug	IHC(P), FC	Hu	\$ 245.00
CD20	605-390	Mouse	IgG2b	ZY459	100 ug	IHC(P), FC	Hu	\$ 245.00
CD21	605-320	Mouse	IgG2a	THB5	100 ug	IHC(P), FC	Hu	\$ 245.00
CD22	604-170	Mouse	IgG1	HIB22	100 ug	FC	Hu	\$ 245.00
CD22	604-171	Mouse	IgG1	RFB4	100 ug	FC	Hu	\$ 245.00
CD23	605-290	Mouse	IgG1	EBVCS-5	100 ug	IHC(P), FC	Hu	\$ 245.00
CD24	605-020	Mouse	IgG1	ML5	100 ug	IHC(P), FC	Hu	\$ 245.00
CD25/IL-2R	603-960	Mouse	IgG1	143-13	100 ug	IHC, WB	Hu	\$ 245.00

Description	Catalogue	Host	Isotyping	Clone	Size	Application	Cross Reactivity	Price
CD25/IL-2R	603-961	Mouse	IgG1	PC61.5	100 ug	IHC, WB	Hu	\$ 245.00
CD26	605-030	Mouse	IgG1	BA5b	100 ug	IHC(P), FC	Hu	\$ 245.00
CD27	605-400	Mouse	IgG1	O323	100 ug	IHC(P), FC	Hu	\$ 245.00
CD28	604-180	Mouse	IgG1	10F3	100 ug	FC	Hu	\$ 245.00
CD29	604-670	Mouse	IgG1	TS2/16.2	100 ug	IHC(P), FC	Hu	\$ 245.00
CD30	604-190	Mouse	IgG1	Ber-H2	100 ug	IHC-P	Hu	\$ 245.00
CD31(PECAM)	500-1274	Mouse	IgG1	JC70	100 ug	IHC-P, WB	Hu	\$ 245.00
CD33	604-200	Mouse	IgG2b	WM53	100 ug	FC	Hu	\$ 245.00
CD33	604-201	Mouse	IgG2b	CD33-4D3	100 ug	FC	Hu	\$ 245.00
CD33	605-040	Mouse	IgG1	ZY205	100 ug	IHC(P), FC	Hu	\$ 245.00
CD34	604-520	Mouse	IgG1	581	100 ug	IHC(P), FC	Hu	\$ 245.00
CD34	604-521	Mouse	IgG1	ICO115	100 ug	IHC(P), FC	Hu	\$ 245.00
CD36	604-330	Mouse	IgM	8C9	100 ug	IHC(P), WB	Hu	\$ 245.00
CD38	604-340	Mouse	IgG1	THB7	100 ug	IHC(P), WB	Hu	\$ 245.00
CD38 (Ms)	604-210	Rat	IgG2a	90	100 ug	IHC	Hu	\$ 245.00
CD40	604-220	Mouse	IgG1	HB14	100 ug	Fc	Hu	\$ 245.00
CD43	603-990	Mouse	IgG1	DFT-1	100 ug	IHC, WB	Hu	\$ 245.00
CD44	604-230	Mouse	IgG1	CD44F11	100 ug	IHC	Hu	\$ 245.00
CD44	604-570	Rat	IgG2b	IM7.8	100 ug	IHC(P), FC	Hu, Ms, Pig	\$ 245.00
CD44	604-580	Mouse	IgG2a	156-3C11	100 ug	IHC(P), FC	Hu	\$ 245.00
CD44(Rb)	604-233	Mouse	IgG1	W4/86	100 ug	IHC	Hu	\$ 245.00
CD45 (Leukocyte common antigen, LCA)	603-130	Mouse	IgG1	HI30	100 ug	WB, IHC	Hu	\$ 245.00
CD45 (Leukocyte common antigen, LCA)	603-131	Mouse	IgG1	ABM496-LJ27.9	100 ug	WB, IHC	Hu	\$ 245.00
CD45(Ms) (Leukocyte common antigen, LCA)	603-132	Hamster	IgG1	104	100 ug	WB, IHC	Hu, Ms	\$ 245.00
CD45RA	605-410	Mouse	IgG2b	HI100	100 ug	IHC(P), FC	Hu	\$ 245.00
CD45RO	605-420	Mouse	IgG2a	UCHL1	100 ug	IHC(P), FC	Hu	\$ 245.00

Description	Catalogue	Host	Isotyping	Clone	Size	Application	Cross Reactivity	Price
CD47	604-690	Mouse	IgG1	B6H12	100 ug	IHC(P), FC	Hu	\$ 245.00
CD49	605-690	Mouse	IgG1	ZY437	100 ug	IHC(P), FC	Hu	\$ 245.00
CD51	603-790	Mouse	IgG1	HCD51-10C4	100 ug	ELISA, IP, FC, IHC	Hu	\$ 245.00
CD52	605-300	Mouse	IgG1	ZY164	100 ug	IHC(P), FC	Hu	\$ 245.00
CD52	605-301	Mouse	IgG2b	HI186	100 ug	IHC(P), FC	Hu	\$ 245.00
CD55	604-500	Mouse	IgG1	67	100 ug	IHC(P), FC	Hu	\$ 245.00
CD56	605-310	Mouse	IgG1	5.1H1	100 ug	IHC(P), FC	Hu	\$ 245.00
CD56	605-311	Mouse	IgG1	123C3	100 ug	IHC(P), FC	Hu	\$ 245.00
CD57	500-1384	Mouse	IgM	NK-1	100 ug	IHC(P) FC	Hu	\$ 239.00
CD58	604-350	Mouse	IgG1	TS2/9	100 ug	IHC(P), WB	Hu	\$ 245.00
CD61	603-800	Mouse	IgG1	HCD61-AP3	100 ug	ELISA, IP, FC, IHC	Hu	\$ 245.00
CD61(Ms)	604-510	Rat	IgG1	HMB3	100 ug	IHC(P), FC	Hu, Ms	\$ 245.00
CD62L	604-360	Mouse	IgG1	DREG56	100 ug	IHC(P), WB	Hu	\$ 245.00
CD64	605-440	Mouse	IgG1	10.1	100 ug	IHC(P), FC	Hu	\$ 245.00
CD66a/c/e	605-050	Mouse	IgG2b	ASL-32	100 ug	IHC(P), FC	Hu	\$ 245.00
CD68/Macrophage	500-6074	Mouse	IgG1	KP1	100 ug	IHC-P	Hu, Ms, Rt	\$ 229.00
CD71	604-470	Mouse	IgG1	T56/14	100 ug	IHC(P), FC	Hu	\$ 245.00
CD71	604-480	Mouse	IgG1	H68.4	100 ug	IHC(P), FC	Hu	\$ 245.00
CD71(ms)	604-380	Rat	Rat IgG2a	R17217.1.4	100 ug	IHC(P), WB	Hu, Ms	\$ 245.00
CD74	604-600	Mouse	IgG1	LN2	100 ug	IHC(P), FC	Hu	\$ 245.00
CD75	605-710	Mouse	IgG2b	LN1	100 ug	IHC(P), FC	Hu	\$ 245.00
CD75s	605-740	Mouse	IgG2a	CRIS-4	100 ug	IHC(P), FC	Hu	\$ 245.00
CD79a	604-660	Mouse	IgG1	HM47	100 ug	IHC(P), FC	Hu	\$ 245.00
CD79a	604-661	Mouse	IgG1	JCB117	100 ug	IHC(P), FC	Hu	\$ 245.00
CD79b	604-490	Mouse	IgG1	SN8	100 ug	IHC(P), FC	Hu	\$ 245.00
CD80	605-060	Mouse	IgG1	2D10	100 ug	IHC(P), FC	Hu	\$ 245.00



Description	Catalogue	Host	Isotyping	Clone	Size	Application	Cross Reactivity	Price
CD81(TAPA-1)	605-070	Mouse	IgG1	5A6	100 ug	IHC(P), FC	Hu	\$ 245.00
CD94	605-080	Mouse	IgG1	DX22	100 ug	IHC(P), FC	Hu	\$ 245.00
CD95L	605-600	Mouse	IgG1	NOK-1	100 ug	IHC(P), FC	Hu	\$ 245.00
CD99	605-090	Mouse	IgG1	3B2/TA8	100 ug	IHC(P), FC	Hu	\$ 245.00
CD103 (hu)	604-130	Mouse	IgG2b	LF61	100 ug	IHC, FC	Hu	\$ 245.00
CD105	604-650	Mouse	IgG2a	MJ7/18	100 ug	IHC(P), FC	Hu	\$ 245.00
CD117(c-kit) (Ms)	604-530	Rat	Rat IgG2b	2B8	100 ug	IHC(P), FC	Ms, Pig	\$ 245.00
CD117(c-kit) Hu	604-140	Mouse	IgG1	104D2	100 ug	FC	Hu	\$ 245.00
CD122(Ms)	605-570	Rat	Rat IgG2b	TM-beta1	100 ug	IHC(P), FC	Hu	\$ 245.00
CD123	605-200	Mouse	IgG1	6H6	100 ug	IHC(P), FC	Hu	\$ 245.00
CD127	605-210	Mouse	IgG1	A019D5	100 ug	IHC(P), FC	Hu	\$ 245.00
CD134	604-150	Mouse	IgG1	L106	100 ug	Fc	Hu	\$ 245.00
CD138	604-320	Mouse	IgG1	1D4	100 ug	IHC(P), WB	Hu	\$ 245.00
CD158a	605-140	Mouse	IgG1	HP-3E4	100 ug	IHC(P), FC	Hu	\$ 245.00
CD158b	605-010	Mouse	IgG1	DX27	100 ug	IHC(P), FC	Hu	\$ 245.00
CD161	605-240	Mouse	IgG1	HP-3G10	100 ug	IHC(P), FC	Hu	\$ 245.00
CD183 (CXCR3)	600-020	Mouse	IgG1	1C6	100 ug	WB, ELISA	Hu, Ms, Rt	\$ 245.00
CD184 (CXCR4)	604-680	Mouse	IgG2a	12G5	100 ug	IHC(P), FC	Hu	\$ 245.00
CD195/CCR5	605-580	Mouse	IgG2a	HEK1	100 ug	IHC(P), FC	Hu	\$ 245.00
CD196 (CCR6)	605-120	Mouse	IgG1	ZY912	100 ug	IHC(P), FC	Hu	\$ 245.00
CD200	605-280	Mouse	IgG1	OX-104	100 ug	IHC(P), FC	Hu	\$ 245.00
CD230(PrP)	605-590	Mouse	IgG2a	2G11	100 ug	IHC(P), FC	Hu	\$ 245.00
CD235a	604-370	Mouse	IgG1	10F7MN	100 ug	IHC(P), WB	Hu	\$ 245.00
CD309/VEGFR2	604-120	Mouse	IgG1	41Q23	100 ug	WB, WB, ELISA, FC	Hu, Ms	\$ 245.00
CDX2	604-260	Mouse	IgG1	ZY487-CDX2	100 ug	IHC-P	Hu	\$ 245.00
CEA	603-070	Mouse	Mouse IgG1	ABM330	100 ug	ELISA, WB, IHC	Hu	\$ 245.00

Description	Catalogue	Host	Isotyping	Clone	Size	Application	Cross Reactivity	Price
c-erbB-2/HER-2	500-12424	Mouse	IgG1	S495	100 ug	IHC-P, WB	Hu, Ms, Rt	\$ 245.00
c-erbB-3/HER-3	500-7314	Mouse	IgG1	ABM385	100 ug	IHC-P, FC	Hu	\$ 245.00
c-erbB-4/HER-4	500-6664	Mouse	IgG1	ABM338	100 ug	IHC-P	Hu,Ms	\$ 245.00
Chk2	500-4914	Mouse	IgG1	ABM173	100 ug	WB, IHC-P		\$ 245.00
Chromogranin A	500-6674	Mouse	IgG1	LK2H10	100 ug	IHC-P, IF	Hu, Ms, Rt, Ck	\$ 245.00
Claudin 5	605-630	Mouse	IgG1	4C3C2	100 ug	IHC(P), FC	Hu	\$ 245.00
c-myb / v-myb	500-4934	Mouse	IgG1	ABM175	100 ug	WB, IHC-P	Hu	\$ 245.00
c-Myc	603-080	Mouse	IgG1	9B7	100 ug	WB, IHC	Hu	\$ 245.00
Cocaine	603-160	Mouse	IgG1	ABM005	100 ug	ELISA, WB, IHC	Hu	\$ 245.00
Collagen II	605-640	Mouse	IgG1	5B2.2	100 ug	IHC(P), FC	Hu	\$ 245.00
Connexin 7	604-290	Mouse	IgG1	ZA004	100 ug	IHC-P	Hu	\$ 245.00
Connexin 32	604-800	Mouse	IgG1	ZY060	100 ug	IHC(P), FC	Hu, Ms, Rt	\$ 245.00
Connexin 32	605-650	Mouse	IgG1	CX-2C2	100 ug	IHC(P), FC	Hu	\$ 245.00
Connexin 36	605-660	Mouse	IgG1	ZC004	100 ug	IHC(P), FC	Hu	\$ 245.00
CXCL12	605-670	Mouse	IgG1	ZY505	100 ug	IHC(P), FC	Hu	\$ 245.00
cyclic adenosine monophosphate (cAMP)	500-9534	Mouse	IgG1	ABM486	100 ug	WB	Hu, Ms, Rt	\$ 245.00
cyclic adenosine monophosphate (cAMP) (Biotinylated)	500-953B	Mouse	Mouse IgG1	ABM486	100 ug	WB	Hu, Ms, Rt	\$ 245.00
Cyclin A2	605-750	Mouse	IgG2a	E23.1	100 ug	IHC(P), FC	Hu	\$ 245.00
Cyclin D1	604-810	Mouse	IgG1	72-13G	100 ug	IHC(P), FC	Hu	\$ 245.00
cyclin E	605-760	Mouse	IgG1	HE12	100 ug	IHC(P), FC	Hu	\$ 245.00
Cytochrome C	605-720	Mouse	IgG1	6H2B4	100 ug	IHC(P), FC	Hu	\$ 245.00
Cytokeratin (HMW)	605-340	Mouse	IgG1	34bE12	100 ug	IHC(P), FC	Hu	\$ 245.00
Cytokeratin (Pan)	605-330	Mouse	IgG1	PanCK-C11	100 ug	IHC(P), FC	Hu	\$ 245.00
Cytokeratin 5 (CK5)	604-430	Mouse	IgG1	XM26	100 ug	IHC(P), FC	Hu	\$ 245.00
Cytokeratin 6	605-610	Mouse	IgG1	ZY14	100 ug	IHC(P), FC	Hu	\$ 245.00
Cytokeratin 6	605-611	Mouse	IgG1	ZY468	100 ug	IHC(P), FC	Hu	\$ 245.00

Description	Catalogue	Host	Isotyping	Clone	Size	Application	Cross Reactivity	Price
Cytokeratin 6	605-612	Mouse	IgG2a	LHK6	100 ug	IHC-P	Hu, Ms	\$ 245.00
Cytokeratin 7	606-460	Mouse	IgG1	ABM270	100 ug	IHC-P	Hu, Ms	\$ 245.00
Cytokeratin 8	606-470	Mouse	IgG1	ZY422-C51	100 ug	WB, IP, IHC-P, IF	Hu,Ms	\$ 245.00
Cytokeratin 8 (pS431)	606-480	Mouse	IgG1	ABM271	100 ug	WB, IP, IHC-P, IF	Hu,Ms	\$ 245.00
Cytokeratin 10	606-490	Mouse	IgG1	ZY420-LH1	100 ug	WB, IHC-P, IF	Hu	\$ 169.00
Cytokeratin 14	606-500	Mouse	IgG3	LL002	100 ug	WB, IHC-P	Hu	\$ 229.00
Cytokeratin 16	606-510	Mouse	IgG1	LL025	100 ug	WB, IHC-P, IF	Hu	\$ 169.00
Cytokeratin 18	606-520	Mouse	IgG1	DC10	100 ug	WB, IHC-P, IF	Hu	\$ 169.00
Cytokeratin 19	606-530	Mouse	IgG1	ZY418	100 ug	WB, IHC-P, IF	Hu	\$ 169.00
Desmoglein 2	605-770	Mouse	IgG1	ZY50	100 ug	IHC(P), FC	Hu	\$ 245.00
Desmoglein 3	603-810	Mouse	Mouse IgG1	ZY043	100 ug	IHC	Hu	\$ 245.00
Digoxigenin	605-680	Mouse	IgG1	Dig	100 ug	IHC(P), FC	Hu	\$ 245.00
DOG1	605-780	Mouse	IgG1	ZY210	100 ug	IHC(P), FC	Hu	\$ 245.00
dsDNA (Double strand-DNA)	606-430	Mouse	IgG3	121-3	100 ug	IHC(P), FC	Hu	\$ 245.00
E-Cadherin	605-730	Mouse	IgG1	4A2C7	100 ug	IHC(P), FC	Hu	\$ 245.00
EGFR 1	500-6694	Mouse	IgG1	ABM341	100 ug	WB, IP, IHC-P	Hu, ms, Rt, Bovine, Chicken, Guinea Pig	\$ 245.00
EpCam	604-410	Mouse	IgG1	AUA1	100 ug	IHC(P), WB	Hu	\$ 245.00
EpCam	604-411	Mouse	IgG1	UV1D9	100 ug	IHC(P), WB	Hu	\$ 245.00
Epha 3	605-810	Mouse	IgG1	5E11F2	100 ug	IHC(P), FC	Hu, Rt	\$ 245.00
ERCC1	500-5674	Mouse	IgG2b	ABM243	100 ug	WB, IHC-P	Hu, Rt	\$ 245.00
Estrogen Recetpor (ER)	603-140	Mouse	IgG1	ER88	100 ug	WB, IHC	Hu	\$ 245.00
Estrogen Recetpor, alpha (ER alpha)	603-141	Mouse	IgG1	ERA	100 ug	WB, IHC	Hu	\$ 245.00
Estrogen Recetpor, beta (ER beta)	603-142	Mouse	IgG1	ERB	100 ug	WB, IHC	Hu	\$ 245.00
F4/80	605-790	Rat	IgG2a	BM8	100 ug	IHC(P), FC	Hu, Ms, Rt	\$ 245.00
FANCD2	604-830	Mouse	IgG1	FI-17	100 ug	IHC(P), FC	Hu	\$ 245.00
FLAG-Tag (DYKDDDDK)	603-870	Mouse	IgG1	ZY428	100 ug	IHC	Tag	\$ 245.00
FLI-1	605-820	Mouse	IgG3	ZY144	100 ug	IHC(P), FC	Hu	\$ 245.00



Description	Catalogue	Host	Isotyping	Clone	Size	Application	Cross Reactivity	Price
FSH	603-171	Mouse	IgG1	FB2	100 ug	ELISA, FC; RIA	Hu	\$ 245.00
FSH b-subunit	603-170	Mouse	IgG1	ABM601	100 ug	ELISA, FC; RIA	Hu	\$ 245.00
FSH b-subunit	603-180	Mouse	IgG1	ABM602	100 ug	ELISA, FC; RIA	Hu	\$ 245.00
Ganglioside GD2	604-700	Mouse	IgG2a	14G2a	100 ug	IHC(P), FC	Hu	\$ 245.00
GAPDH	602-010	Mouse	IgG1	258	100 ug	ELISA, WB, IP	Hu	\$ 245.00
GAPDH	602-011	Mouse	IgG1	2D4A7	100 ug	ELISA, WB, IP	Hu	\$ 245.00
GCTM-2	605-850	Mouse	IgG2a	ZY165	100 ug	IHC(P), FC	Hu	\$ 245.00
GLEPP-1	603-900	Mouse	IgG1	5F3F8	100 ug	IHC	Hu	\$ 245.00
GST	500-7634	Mouse	Mouse IgG1	ABM400	100 ug	WB, AP	Tag	\$ 245.00
GUCY1B3 (GCS-b-1)	604-980	Mouse	IgG1	GC11	100 ug	IHC(P), FC	Hu	\$ 245.00
HA Tag (YPYDVPDYA)	605-860	Mouse	IgG2a	5B1D10	100 ug	IHC(P), FC	Tag	\$ 245.00
HBcAg	603-230	Mouse	IgG2b	ABM021	100 ug	ELISA, WB, IHC	Hu	\$ 245.00
HBcAg	603-250	Mouse	IgG2b	ABM022	100 ug	ELISA, WB, IHC	Hu	\$ 245.00
HBeAg	603-270	Mouse	Ig2a	ABM042	100 ug	ELISA, WB, IHC	Hu	\$ 245.00
HBeAg	603-280	Mouse	IgG1	ABM043	100 ug	ELISA, WB, IHC	Hu	\$ 245.00
HBsAg	603-300	Mouse	IgG1	ABM014	100 ug	ELISA, WB, IHC	Hu	\$ 245.00
HBsAg	603-290	Mouse	IgG/M	ABM105	100 ug	ELISA, WB, IHC	Hu	\$ 245.00
hCG a-subunit	603-310	Mouse	IgG1	ABM401	100 ug	ELISA, WB, IHC	Hu	\$ 245.00
hCG b-subunit	603-350	Mouse	IgG1	ABM403-2C5	100 ug	ELISA, WB, IHC	Hu	\$ 245.00
HCV envelope antigen	603-380	Mouse	IgG1	ABM111	100 ug	ELISA, WB, IHC	Hu	\$ 245.00
Heat Shock Factor 1	500-7654	Rat	Rat IgG1	ABM401	100 ug	WB, IP, IF, GSA	Hu, Ms, Rt	\$ 245.00
Heat Shock Factor 2	500-7664	Rat	Rat IgG1	ABM402	100 ug	WB, IP, IF, GSA	Hu, Ms, Rt	\$ 245.00
Hepatitis B virus surface Ag	500-1714	Mouse	IgG1	ABM136	100 ug	IHC(P)	Hu	\$ 199.00
Her2	605-870	Mouse	IgG1	TAB250	100 ug	IHC(P), FC	Hu	\$ 245.00
hGH	500-3124	Mouse	IgG1	ABM106	100 ug	IHC(P)	Hu	\$ 239.00
HIV FLKEKGGL	603-390	Mouse	IgG3	ABM068	100 ug	ELISA, WB, IHC	Hu	\$ 245.00
HIV LHPEYYK	603-400	Mouse	IgG1	ABM067	100 ug	ELISA, WB, IHC	Hu	\$ 245.00

Description	Catalogue	Host	Isotyping	Clone	Size	Application	Cross Reactivity	Price
HIV p24	603-410	Mouse	IgG1	ABM018	100 ug	ELISA, WB, IHC	Hu	\$ 245.00
HIV p24	603-420	Mouse	IgG1	ABM019	100 ug	ELISA, WB, IHC	Hu	\$ 245.00
HIV, gp160,120	603-220	Mouse	IgG2a	ABM603/55-83	100 ug	ELISA, WB, IHC	Hu	\$ 245.00
HIV, nef. FPVPTPQ	603-610	Mouse	IgG2a	ABM069	100 ug	ELISA, WB, IHC	Hu	\$ 245.00
HIV, p18	603-430	Mouse	IgG1	ABM075	100 ug	ELISA, WB, IHC	Hu	\$ 245.00
HIV, p55+18	603-440	Mouse	IgG1	ABM074	100 ug	ELISA, WB, IHC	Hu	\$ 245.00
HIVgp160, gp120, gp41	603-450	Mouse	IgG1	ABM001	100 ug	ELISA, WB, IHC(P)	Hu	\$ 245.00
HIVgp160, gp120, gp41	603-460	Mouse	IgG1	ABM015	100 ug	ELISA, WB, IHC	Hu	\$ 245.00
HLA-DR	605-480	Mouse	IgG2a	L243	100 ug	IHC(P), FC	Hu	\$ 245.00
HLA-DR	605-481	Mouse	IgG2b	LN3	100 ug	IHC(P), FC	Hu	\$ 245.00
HPV-16	500-5834	Mouse	IgG2a	ABM257	100 ug	IHC-P, FC, KA	Hu,Co,Pi,Rb	\$ 245.00
HPV-16	604-990	Mouse	IgG2a	CAMVIR-1	100 ug	IHC(P), FC	Hu	\$ 245.00
IFN gamma	500-4584	Mouse	IgG1	ABM153	100 ug	ELISA	Hu	\$ 245.00
IgA (hu)	605-880	Mouse	IgG1	GA112	100 ug	IHC-P	Hu	\$ 199.00
IgA (Hu)	605-881	Mouse	IgG1	His-A3	100 ug	IHC-P	Hu	\$ 199.00
IgD	605-130	Mouse	IgG1	ZY913	100 ug	IHC(P), FC	Hu	\$ 245.00
IgD	605-490	Mouse	IgG1	IA6-2	100 ug	IHC(P), FC	Hu	\$ 245.00
IgG1 (Hu)	605-890	Mouse	IgG1	HP6069	100 ug	IHC(P), FC	Hu	\$ 245.00
IgG4 (Hu)	605-900	Mouse	IgG1	HP6025	100 ug	IHC(P), FC	Hu	\$ 245.00
IgM (Hu)	605-910	Mouse	IgG1	HP6083	100 ug	IHC(P), FC	Hu	\$ 245.00
IL-10	604-950	Mouse	IgG1	JES3-9D7	100 ug	IHC(P), FC	Hu Rat	\$ 245.00
IL-10 (Ms)	500-8554	Rat	Rat IgM	ABM464	100 ug	ELISA	Hu	\$ 245.00
IL-10(Ms)	604-940	Rat	IgG1	JES5-2A5	100 ug	IHC(P), FC	Ms, Hu	\$ 245.00
IL-2	604-930	Rat	IgG2a	MQ1-17H12	100 ug	IHC(P), FC	Hu, Ms	\$ 245.00
IL-2 (Ms)	604-931	Rat	IgG2a	JES6-1A2	100 ug	IHC(P), FC	Ms	\$ 245.00
IL-2(ms)	604-770	Rat	Rat IgG2a	ZY218	100 ug	IHC(P), FC	Hu	\$ 245.00
IL-4 (Ms)	500-8524	Rat	Rat IgG2b	BVD4-1D11	100 ug	ELISA	Hu, Ms	\$ 245.00

Description	Catalogue	Host	Isotyping	Clone	Size	Application	Cross Reactivity	Price
IL-6 (Ms)	500-8544	Rat	Rat IgG1	MP5-20F3	100 ug	ELISA	Hu, Ms	\$ 245.00
IL-7	604-760	Rat	Rat IgG2a	ZY335	100 ug	IHC(P), FC	Hu, Ms	\$ 245.00
INCENP	605-920	Mouse	IgG1	58-217	100 ug	IHC(P), FC	Hu	\$ 245.00
Insulin	500-1774	Mouse	IgG1	2D11H5	100 ug	IHC(P)	Hu, Rt, Pg	\$ 199.00
Insulin Receptor (IR)	500-5844	Mouse	IgG1	ABM258	100 ug	IHC-P, FC, KA	Hu	\$ 245.00
Integrin Beta 1	605-930	Mouse	IgG1	A1IB2	100 ug	IHC(P), FC	Hu	\$ 245.00
IRAK4(pT345)	600-560	Mouse	IgG1	A8A8	100 ug	WB, ELISA	Hu, Ms, Bv, Dg	\$ 230.00
IRS-1	605-940	Mouse	IgG1	529Q21	100 ug	IHC(P), FC	Hu	\$ 245.00
JNK1	605-950	Mouse	IgG1	4A2G12	100 ug	IHC(P), FC	Hu	\$ 245.00
Kappa Light Chain	603-120	Mouse	IgG1	L1C1	100 ug	WB, IHC	Hu	\$ 245.00
Kappa Light Chain	603-121	Mouse	IgG1	K88	100 ug	WB, IHC	Hu	\$ 245.00
Ki-67	604-240	Mouse	IgG1	MM1	100 ug	IHC-P	Hu	\$ 245.00
Lambda Light Chain (Hu)	604-400	Mouse	IgG1	N10/2	100 ug	IHC(P), WB	Hu	\$ 245.00
Lambda Light Chain (Hu)	604-610	Mouse	IgG1	ICO106	100 ug	IHC(P), FC	Hu	\$ 245.00
Lambda Light Chain (Hu)	604-611	Mouse	IgG1	N10/2	100 ug	IHC(P), FC	Hu	\$ 245.00
Laminin	500-7794	Mouse	IgG2b	ABM412	100 ug	WB, IP	Hu, Rt, Bv, Ck	\$ 245.00
LH b-subunit	603-540	Mouse	IgG1	ABM501	100 ug	ELISA, WB, IHC	Hu	\$ 245.00
Macrophage	605-960	Mouse	IgG1	MAC387	100 ug	IHC(P), FC	Hu	\$ 245.00
MAdCAM1	606-010	Mouse	IgG1	355G8	100 ug	IHC(P), FC	Hu	\$ 245.00
MAGE1	606-020	Mouse	IgG1	MA454	100 ug	IHC(P), FC	Hu, Rat,	\$ 245.00
MALT-1	606-030	Mouse	IgG1	50	100 ug	IHC(P), FC	Hu	\$ 245.00
MCV	606-040	Mouse	IgG1	ZY514	100 ug	IHC(P), FC	Hu	\$ 245.00
MDM2	604-890	Mouse	IgG2a	2A10	100 ug	IHC(P), FC	Hu	\$ 245.00
Melan-A/MART-1	603-920	Mouse	IgG1	A103	100 ug	IHC, WB	Hu	\$ 245.00
Melanoma (HMB45)	604-920	Mouse	IgG1	HMB45	100 ug	IHC(P), FC	Hu	\$ 245.00
Melanoma/NG2	602-940	Mouse	IgG1	D14.M8	100 ug	IHC(P), FC	Hu	\$ 245.00
MHC I (HLA-A,B,C)	500-7914	Mouse	IgG1	ABM419	100 ug	FC	Hu	\$ 239.00

Description	Catalogue	Host	Isotyping	Clone	Size	Application	Cross Reactivity	Price
MHC II (HLA-DP and DR)	500-6144	Mouse	IgG1	ABM288	100 ug	IHC, FC	Hu	\$ 239.00
Mitochondria	500-5204	Mouse	IgG1	ABM198	100 ug	WB, IHC-P	Hu	\$ 245.00
MMP1	606-050	Mouse	IgG1	ZY348	100 ug	IHC(P), FC	Hu	\$ 245.00
Morphine	603-580	Mouse	IgG1	ABM063	100 ug	ELISA, WB, IHC	Hu	\$ 245.00
MUC1 (EMA)	605-970	Mouse	IgG2a	E29	100 ug	IHC(P), FC	Hu	\$ 245.00
MUC2	605-980	Mouse	IgG1	CCP58	100 ug	IHC(P), FC	Hu	\$ 245.00
MUC5	605-990	Mouse	IgG1	45M1	100 ug	IHC(P), FC	Hu	\$ 245.00
Multi-Drug Resistance Marker (P-Glycoprotein)	603-150	Mouse	IgG1	ABM137	100 ug	WB, IHC	Hu	\$ 245.00
Myeloid Marker	606-060	Mouse	IgG1	BM2	100 ug	IHC(P), FC	Hu	\$ 245.00
Myosin Heavy Chain, (Smooth Muscle)	500-5244	Mouse	IgG1	ABM201	100 ug	IHC-P	Hu	\$ 245.00
Myosin Heavy Chain, Cardiac	603-820	Mouse	IgG2b	9G11	100 ug	WB, IHC	Hu, Ms, Rt, Bv	\$ 245.00
NAMPT	603-970	Mouse	IgG2a	ABM820	100 ug	IHC, WB	Hu	\$ 245.00
Napsin A	606-070	Mouse	IgG1	ZY397	100 ug	IHC(P), FC	Hu	\$ 245.00
NBD1 (IN1)	604-840	Mouse	IgG1	ZY356	100 ug	IHC(P), FC	Hu	\$ 245.00
NBD1 (IN2)	604-850	Mouse	IgG1	ZY357	100 ug	IHC(P), FC	Hu	\$ 245.00
Neurofilaments (200kDa&68kDa)	500-1984	Mouse	IgG1	ABM145	100 ug	IHC(P), WB, IP	Hu, Ms, Rt	\$ 245.00
Neuron Specific Enolase (NSE)	500-6754	Mouse	IgG1	ABM347	100 ug	WB, IP, IHC-P	Hu	\$ 245.00
Nix	605-550	Mouse	IgG1	ZY163	100 ug	IHC(P), FC	Hu	\$ 245.00
NK-1	606-080	Mouse	IgG2a	PK136	100 ug	IHC(P), FC	Hu	\$ 245.00
NKB1	605-150	Mouse	IgG1	DX9	100 ug	IHC(P), FC	Hu	\$ 245.00
NKX3.1	606-090	Mouse	IgG1	ZY464	100 ug	ELISA, WB, IP	Hu	\$ 220.00
Notch-1	606-100	Mouse	IgG1	mN1A	100 ug	IHC(P), FC	Hu, Rat, Mosue	\$ 245.00
Occludin	606-110	Mouse	IgG1	OC-3F10	100 ug	IHC(P), FC	Hu, Rat, Bacteria, chicken	\$ 245.00
p21/WAF1	500-6334	Mouse	IgG1	ZY011	100 ug	IHC-P, IP, IF	Hu	\$ 245.00
P40	606-120	Mouse	IgG1	ZY601	100 ug	IHC(P), FC	Hu	\$ 245.00
p53	500-6774	Mouse	IgG2a	DO-7	100 ug	WB, IP, IHC-P, FC	Hu, Ms, Rt,	\$ 245.00
p57 /Kip2	500-6354	Mouse	IgG2b	KP10	100 ug	IHC-P, IP	Hu,Ms	\$ 245.00

Description	Catalogue	Host	Isotyping	Clone	Size	Application	Cross Reactivity	Price
p59/FYN	605-840	Mouse	IgG1	FYN-1S	100 ug	IHC(P), FC	Hu, ms, Rt	\$ 245.00
PARP (Poly(ADP-ribose) polymerase)	604-860	Mouse	IgG1	10H	100 ug	IHC(P), FC	Hu	\$ 245.00
PAX6	604-250	Mouse	IgG1	E5B	100 ug	IHC-P	Hu	\$ 245.00
PAX8	603-910	Mouse	IgG1	ABM932	100 ug	IHC, WB	Hu	\$ 245.00
PCNA	606-130	Mouse	IgG1	PC10	100 ug	IHC(P), WB	Hu	\$ 245.00
PCPTP1	606-140	Mouse	IgG2a	T10	100 ug	IHC(P), FC	Hu	\$ 245.00
PD-1	604-630	Mouse	IgG1	10B5	100 ug	IHC(P), FC	Hu	\$ 245.00
PD-1	604-640	Mouse	IgG1	PD1	100 ug	IHC(P), FC	Hu	\$ 245.00
PD-1	604-641	Mouse	IgG1	1E3	100 ug	IHC(P), FC	Hu	\$ 245.00
PDGF	603-980	Mouse	IgM	1G10	100 ug	IHC(P), WB, IF	Hu, Rt, Ms	\$ 245.00
PD-L1	604-620	Mouse	IgG1	5H10	100 ug	IHC(P), FC	Hu	\$ 245.00
PD-L1	604-621	Mouse	IgG1	3D10	100 ug	IHC(P), FC	Hu	\$ 245.00
PD-L1 (B7-H1)	604-710	Mouse	IgG2b	29E.2A3.	100 ug	IHC(P), FC	Hu	\$ 245.00
PD-L1 (CD274)	604-730	Mouse	IgG1	ZY349	100 ug	IHC(P), FC	Hu	\$ 245.00
Perforin	604-820	Mouse	IgG2b	dG9	100 ug	IHC(P), FC	Hu	\$ 245.00
PETH	606-150	Mouse	IgG1	ZY434	100 ug	IHC(P), FC	Hu	\$ 245.00
Phosphoserine	500-020	Mouse	IgG1	2A4	100 ug	WB, IP	Hu, Ms, Rt	\$ 245.00
Phosphoserine(Biotinylated)	500-021	Mouse	IgG1	2A4	100 ug	WB, IP	Hu, Ms, Rt	\$ 245.00
Phosphotyrosin	603-830	Mouse	IgG1	7E11	100 ug	WB, IHC	Hu, Ms, Rt, Bv	\$ 245.00
PI3K p85 beta	606-160	Mouse	IgG1	T15	100 ug	IHC(P), FC	Hu	\$ 245.00
PIN-1	606-170	Mouse	IgG2b	ZP004	100 ug	IHC(P), FC	Hu	\$ 245.00
PLAP	604-300	Mouse	IgG1	PLAP	100 ug	IHC-P	Hu	\$ 245.00
Plasma Cell Marker	606-180	Mouse	IgG2a	LIV3G11	100 ug	IHC(P), FC	Hu	\$ 245.00
Podocalyxin	606-190	Mouse	IgG1	ZY103-3D3	100 ug	IHC(P), FC	Hu	\$ 245.00
PPP2R5C	606-200	Mouse	IgG1	TQ11-1G6	100 ug	IHC(P), FC	Hu,	\$ 245.00
PRL b-subunit	603-620	Mouse	IgG1	ABM034	100 ug	ELISA, WB, IHC	Hu	\$ 245.00
PRL b-subunit	603-630	Mouse	IgG2a	ABM035	100 ug	ELISA, WB, IHC	Hu	\$ 245.00

Description	Catalogue	Host	Isotyping	Clone	Size	Application	Cross Reactivity	Price
Progesterone Receptor (PR)	604-970	Mouse	IgG1	16-4	100 ug	IHC(P), FC	Hu	\$ 245.00
Prostate Specific Acid Phosphatase (PSAP)	500-6394	Mouse	IgG1	ABM312	100 ug	IHC-P, IF	Hu, Rt	\$ 199.00
PSA	603-660	Mouse	IgG1	A67-B/E3	100 ug	ELISA, WB, IHC	Hu	\$ 245.00
PSA	603-661	Mouse	IgG1	ERPR8	100 ug	ELISA, WB, IHC	Hu	\$ 245.00
pTEN	602-970	Mouse	IgG1	M10_KZ	100ug	ELISA, WB, IHC	Hu, Ms, Rt	\$ 245.00
PTX	604-440	Mouse	IgG1	ZY360	100 ug	IHC(P), FC	Bac	\$ 245.00
Ras	603-090	Mouse	IgG1	4E5	100 ug	WB, IHC	Hu	\$ 245.00
Red Blood Cell	606-210	Mouse	IgG1	ZY340	100 ug	IHC(P), FC	Hu, Rt, Ms, Sp	\$ 245.00
Renal Cell Carcinoma (RCC, gp200)	606-220	Mouse	IgG1	PN-15	100 ug	IHC(P), FC	Hu	\$ 245.00
Retinoblastoma (RB)	604-900	Mouse	IgG1	ZY493	100 ug	WB, IHC(P), FC	Hu	\$ 245.00
RRUT-3	606-230	Mouse	IgG1	ZY203	100 ug	IHC(P), FC	Hu	\$ 245.00
S100	500-6824	Mouse	IgG1	15E2E2	100 ug	IHC-P	Hu, Ms, Rt	\$ 219.00
Sgt-1A	606-240	Mouse	IgG1	5B12F5	100 ug	IHC(P), FC	Hu	\$ 245.00
SKP2	606-250	Mouse	IgG1	1G12E9	100 ug	IHC(P), FC	Hu	\$ 245.00
SOX-11	606-260	Mouse	IgG1	SOX11-C1	100 ug	IHC(P), FC	Hu	\$ 245.00
SSEA-3	606-270	Mouse	IgM	MC-631	100 ug	IHC(P), FC	Hu	\$ 245.00
SSEA-4	606-280	Mouse	IgG3	MC813-70	100 ug	IHC(P), FC	Hu	\$ 245.00
STAT3	606-290	Mouse	IgG2a	159	100 ug	IHC(P), FC	Hu, Ms, Rt	\$ 245.00
STAT5	606-300	Mouse	IgG1	205	100 ug	IHC(P), FC	Hu	\$ 245.00
Surfactant Protein A (SP-A)	606-310	Mouse	IgG1	ZY479	100 ug	IHC(P), FC	Hu	\$ 245.00
Synaptophysin	604-310	Mouse	IgG3	SYP	100 ug	IHC(P), WB	Hu	\$ 245.00
Tat epitope 1	603-690	Mouse	IgG1	ABM029	100 ug	ELISA, WB, IHC	Hu	\$ 245.00
Tat epitope 2	603-710	Mouse	IgG1/M	ABM031	100 ug	ELISA, WB, IHC	Hu	\$ 245.00
Tau	606-320	Mouse	IgG1	Tau 5	100 ug	IHC(P), FC	Hu	\$ 245.00
TCRa/b (Human)	605-100	Mouse	IgG1	IP26	100 ug	IHC(P), FC	Hu	\$ 245.00
TCRr/d(Human)	605-110	Mouse	IgG1	B1	100 ug	IHC(P), FC	Hu	\$ 245.00
TCR DO11.10	606-330	Mouse	IgG2a	JKJ1-26	100 ug	IHC(P), FC	Hu	\$ 245.00



Description	Catalogue	Host	Isotyping	Clone	Size	Application	Cross Reactivity	Price
TdT	604-880	Mouse	IgG1	TdT2	100 ug	IHC(P), FC	Hu	\$ 245.00
Telomerase Reverse Transcriptase (TERT)	606-350	Mouse	IgM	2C4	100 ug	IHC(P), FC	Hu	\$ 245.00
Tenascin C	606-340	Mouse	IgG1	T2H5	100 ug	WB, ELISA	Ms, Rt, Hu	\$ 240.00
TGF alpha	603-770	Mouse	IgG2b	TGF88	100 ug	ELISA, IP, FC, IHC	Hu	\$ 245.00
Thymidylate Synthase	606-360	Mouse	IgG1	TS106	100 ug	ELISA, WB, IP, IHC(P), FC	Hu	\$ 245.00
Thyroglobulin	604-740	Mouse	IgG1	ZY460	100 ug	IHC(P), FC	Hu	\$ 245.00
TIA-1	604-270	Mouse	IgG1	TIA1	100 ug	IHC-P	Hu	\$ 245.00
TNF alpha	500-8614	Rat	Rat IgG1	MP6-XT3	100 ug	ELISA	Hu	\$ 245.00
TNF-a (Ms)	604-960	Rat	Rat IgG1	MP6-XT3	100 ug	IHC(P), FC	Hu	\$ 245.00
TRIM29 (Lung Squamous Cell Carcinoma Marker)	606-370	Mouse	IgG2b	TRIM29	100 ug	IHC(P), FC	Hu	\$ 245.00
Troponin T	500-3244	Mouse	IgG1	9B1	100 ug	IHC(P)	Hu	\$ 239.00
TSC1 (Hamartin)	606-380	Mouse	IgG1	5C8A12	100 ug	IHC(P), FC	Hu, Rt, Ms	\$ 245.00
TSH	600-570	Mouse	IgG1	M1A10	100 ug	IHC, WB, ELISA	Hu	\$ 220.00
TSH b-subunit	603-720	Mouse	IgG1	ABM801	100 ug	ELISA, WB, IHC	Hu	\$ 245.00
TSH b-subunit	603-750	Mouse	IgG2b	ABM802	100 ug	ELISA, WB, IHC	Hu	\$ 245.00
TTF1 (thyroid transcription factor 1)	604-870	Mouse	IgG1	SP141	100 ug	IHC(P), FC	Hu	\$ 245.00
Tubulin-a	500-6874	Mouse	IgG1	ABM359	100 ug	WB, IP, IHC-P, IF	Hu, Ms, Rt	\$ 245.00
Tubulin-b	500-6514	Mouse	IgG1	ABM323	100 ug	WB, IHC-P, IF	Hu, Ms, Rt	\$ 245.00
Tumor-Associated Glycoprotein (TAG-72)	603-880	Mouse	IgG1	B72.3	100 ug	IHC	Hu	\$ 245.00
Tyrosinase	606-390	Mouse	IgG2a	T311	100 ug	IHC(P), FC	Hu	\$ 245.00
Ubiquitin	606-400	Mouse	IgG	UBI-1	100 ug	IHC(P)	Hu, Ms, Bv, Ck	\$ 185.00
Uroplakin-2	603-940	Mouse	IgG1	ABM146	100 ug	IHC, WB	Hu	\$ 245.00
Uroplakin-3	603-950	Mouse	IgG1	ABM129	100 ug	IHC, WB	Hu	\$ 245.00
Vascular Endothelial Growth Factor(VEGF)	500-5494	Mouse	IgG1	ABM225	100 ug	WB, IHC-P	Hu	\$ 245.00
Vimentin	603-890	Mouse	IgG1	V9B1	100 ug	IHC	Hu	\$ 245.00
ZAP-70	606-410	Mouse	IgG1	1E7.2	100 ug	IHC(P), FC	Hu	\$ 245.00
ZAP-70	604-780	Mouse	IgG1	ZY184	100 ug	IHC(P), FC	Hu	\$ 245.00

## Polyclonal Antibodies - Catalog



AbboMax continuously provides a large range of polyclonal antibodies to our life science professional world widely. According to the knowledge of protein chemistry and immunogenicity index, we carefully select the host animals, antigen epitope and optimize the immunization schemes to produce high quality of the antibodies. Most of our polyclonal antibodies are produced in rabbits and have been affinity purified to guarantee the batch-to-batch consistency. With the advantage of the large pooled antisera from the continuously immunized animals, we eliminate the possibility of a single atypical antibody predominating and gives minimum batch-to-batch variation. The titer variation between batches of unconjugated polyclonal antibodies is less than 10% according to Biacore measurements. AbboMax unconjugated polyclonal antibodies are generally well-suited for a variety of techniques.

Description	Catalogue	Host	Isotyping	Size	Application	Cross Reactivity	Price
14-3-3 beta	500-2924	Rabbit	Rabbit IgG	100 ug	IHC(P), WB, IP	Hu, Ms, Rt	\$ 189.00
14-3-3 zeta	500-12604	Rabbit	Rabbit IgG	100 ug	IHC-P, WB	Hu, Ms, Rt	\$ 189.00
15-Lox-1	600-580	Rabbit	Rabbit IgG	100 ug	WB, ELISA	Hu	\$ 219.00
15-Lox-2	600-590	Rabbit	Rabbit IgG	100 ug	WB, ELISA	Hu	\$ 219.00
a-B-Crystallin	500-3764	Rabbit	Rabbit IgG	100 ug	IHC(P), WB	Hu	\$ 199.00
Actin, skeletal muscle	500-3884	Rabbit	Rabbit IgG	100 ug	IHC(P)	Hu, Rt, Rb, Gp	\$ 199.00
Actin, Smooth Muscle	600-410	Rabbit	Rabbit IgG	100 ug	IHC(P), WB	Hu, Ms, Rt	\$ 199.00
Actin-beta	500--4554	Rabbit	Rabbit IgG	100 ug	IHC(P)	Hu	\$ 245.00
ADAM10/KUZ	500-9424	Rabbit	Rabbit IgG	100 ug	WB	Hu	\$ 245.00
ADM2	620-990	Rabbit	Rabbit IgG	100ug	ELISA, WB	Hu	\$ 245.00
AEG1(C-Term)	630-100	Rabbit	Rabbit IgG	100ug	ELISA, WB	Hu, Ms, Rt, Bv	\$ 245.00
AEG1(Paired S568)	630-090	Rabbit	Rabbit IgG	100ug	ELISA, WB	Hu, Ms, Rt, Bv	\$ 245.00
AEG1(pS568)	630-080	Rabbit	Rabbit IgG	100ug	ELISA, WB	Hu, Ms, Rt, Bv	\$ 245.00
Aggrecan/AGC1	600-670	Rabbit	Rabbit IgG	100 ug	WB, ELISA	Hu, Ms, Rt	\$ 215.00
AKT1 (paried T308)	620-580	Rabbit	Rabbit IgG	100ug	ELISA, WB, IHC	Hu, Ms, Rt	\$ 245.00
AKT1/PKBa	600-200	Rabbit	Rabbit IgG	100 ug	WB, IP	Hu, Ms, Rt	\$ 199.00
AKT1/PKBa(pS473)	600-220	Rabbit	Rabbit IgG	100 ug	WB, ELISA, IP	Hu, Ms, Rt	\$ 220.00
AKT1/PKBa(pT308)	600-210	Rabbit	Rabbit IgG	100 ug	WB, ELISA, IP	Hu, Ms, Rt	\$ 245.00
AKT2/PKBb	600-230	Rabbit	Rabbit IgG	100 ug	WB, ELISA, IP	Hu, Ms, Rt	\$ 199.00
AKT3/PKBg	600-240	Rabbit	Rabbit IgG	100 ug	WB, ELISA, IP	Hu	\$ 199.00
ALDH1a1	630-690	Rabbit	Rabbit IgG	100ug	ELISA, WB	Hu, Ms, Rt,	\$ 245.00
ALK/p80	500-1094	Rabbit	Rabbit IgG	100 ug	IHC(P)	Hu	\$ 245.00
ALK/p80(Pired Y1282/12	630-810	Rabbit	Rabbit IgG	100ug	ELISA, WB	Hu, Ms, Rt,	\$ 245.00
ALK/p80(pY1282/1283	630-800	Rabbit	Rabbit IgG	100ug	ELISA, WB	Hu, Ms, Rt,	\$ 245.00
AMPKa(pS79)	600-250	Rabbit	Rabbit IgG	100 ug	WB, ELISA, IP	Hu	\$ 230.00
AMPK-alpha	620-130	Rabbit	Rabbit IgG	100 ug	WB, ELISA, IP	Hu, Rt, Ms, Bv, Ck, Dg, In	\$ 245.00

Description	Catalogue	Host	Isotyping	Size	Application	Cross Reactivity	Price
AMPK-alpha(pT172)	620-120	Rabbit	Rabbit IgG	100 ug	WB, ELISA, IP	Hu, Rt, Ms, Bv, Ck, Dg, In	\$ 245.00
Amylin Peptide	500-3404	Rabbit	Rabbit IgG	100 ug	IHC(P)	Hu	\$ 245.00
amyloid	500-11284	Rabbit	Rabbit IgG	100 ug	IHC, WB, ELISA, IP	Hu, Ms	\$ 245.00
Amyloid beta	500-3534	Rabbit	Rabbit IgG	100 ug	IHC(P), WB, IP	Hu	\$ 245.00
Amyloid-beta	600-730	Rabbit	Rabbit IgG	100 ug	WB, ELISA	Hu	\$ 225.00
Amyloid-beta (1-40)	600-740	Rabbit	Rabbit IgG	100 ug	WB, ELISA	Hu	\$ 245.00
Amyloid-beta (1-42)	600-750	Rabbit	Rabbit IgG	100 ug	WB, ELISA	Hu	\$ 245.00
Androgen Receptor (AR) (Paired S210)	602-690	Rabbit	Rabbit IgG	100 ug	ELISA, WB, IP	Hu, Ms, Rt	\$ 245.00
Androgen Receptor (AR)	600-480	Rabbit	Rabbit IgG	100 ug	WB, ELISA	Hu, Ms, Rt	\$ 199.00
Androgen Receptor (AR) (pS210)	602-680	Rabbit	Rabbit IgG	100 ug	ELISA, WB, IP	Hu, Ms, Rt	\$ 245.00
Annexin I	601-830	Rabbit	Rabbit IgG	100 ug	ELISA, IHC(P), WB	Hu	\$ 245.00
Annexin IV	500-13514	Rabbit	Rabbit IgG	100 ug	WB	Hu, Ms, Rt	\$ 245.00
Annexin VI	500-12384	Rabbit	Rabbit IgG	100 ug	IHC-P, WB	Hu, Ms, Rt	\$ 245.00
ANP (Atrial Natriuretic peptide)/BNP (CT)	601-700	Rabbit	Rabbit IgG	100 ug	Elisa, WB, IHC	Hu	\$ 245.00
ARG1	600-490	Rabbit	Rabbit IgG	100 ug	WB, ELISA	Hu	\$ 220.00
ARK1C2	620-940	Rabbit	Rabbit IgG	100ug	ELISA, WB, IHC	Hu, Ms, Rt,	\$ 245.00
AXL/UFO (Phospho)	620-970	Rabbit	Rabbit IgG	100ug	ELISA, WB	Hu, Ms, Rt,	\$ 245.00
AXL/UFO (pY770_	630-980	Rabbit	Rabbit IgG	100ug	ELISA, WB	Hu, Ms, Rt,	\$ 245.00
AXL/UFO (pY812)	630-970	Rabbit	Rabbit IgG	100ug	ELISA, WB	Hu, Ms, Rt,	\$ 245.00
AXL/UFO (pY857)	630-990	Rabbit	Rabbit IgG	100ug	ELISA, WB	Hu, Ms, Rt,	\$ 245.00
BAFF/BLys/Thank/Tall-1	500-9494	Rabbit	Rabbit IgG	100 ug	WB	Hu, Ms, Rt	\$ 245.00
Bak	500-3324	Rabbit	Rabbit IgG	100 ug	IHC(P)	Hu, Ms, Hm	\$ 245.00
BAX	500-3384	Rabbit	Rabbit IgG	100ug	ELISA, WB	Hu	\$ 245.00
BCAR3	600-100	Rabbit	Rabbit IgG	100 ug	WB, IHC	Hu, Rt, Ms	\$ 245.00
BCAR3 (Non-phospho)	600-090	Rabbit	Rabbit IgG	100 ug	WB, IHC	Hu, Rt, Ms	\$ 245.00
BCAR3 (phospho)	600-080	Rabbit	Rabbit IgG	100 ug	WB, IHC	Hu, Rt, Ms	\$ 245.00
BCL-10	500-7114	Rabbit	Rabbit IgG	100 ug	WB	Hu, Ms, Rt	\$ 245.00
BCL-2	500-4734	Rabbit	Rabbit IgG	100ug	WB	Hu	\$ 245.00
BCL-2	500-10544	Rabbit	Rabbit IgG	100 ug	WB	Hu	\$ 245.00
BCL-2 (pThr129)	500-8874	Rabbit	Rabbit IgG	100 ug	WB, IP	Hu, Ms, Rt	\$ 245.00
BCL-2(pS70)	500-11574	Rabbit	Rabbit IgG	100 ug	IHC, ELISA	Hu, Ms	\$ 245.00
BCL-2(pT56)	500-11584	Rabbit	Rabbit IgG	100 ug	IHC, ELISA	Hu, Ms	\$ 245.00

Description	Catalogue	Host	Isotyping	Size	Application	Cross Reactivity	Price
BCL-6	601-840	Rabbit	Rabbit IgG	100 ug	ELISA, IHC(P), WB	Hu	\$ 245.00
BCL-w	602-950	Rabbit	Rabbit IgG	100ug	ELISA, WB, IHC	Hu, Ms, Rt, Ck, Bv, Canis	\$ 245.00
Bcl-X	500-3374	Rabbit	Rabbit IgG	100 ug	IHC(P)	Hu, Ms	\$ 245.00
BCL-XL(pS62)	500-11594	Rabbit	Rabbit IgG	100 ug	IHC, WB, ELISA, IP	Hu, Ms	\$ 245.00
Bim	500-4364	Rabbit	Rabbit IgG	100 ug	IHC(P), WB	Hu, Ms, Rt	\$ 245.00
Blk	500-10904	Rabbit	Rabbit IgG	100 ug	WB	Hu	\$ 245.00
bNOS	500-3824	Rabbit	Rabbit IgG	100 ug	IHC(P), WB, IP	Rt, human	\$ 245.00
BNP/NPPB	601-320	Rabbit	Rabbit IgG	100 ug	ELISA, IHC(P), WB	Hu	\$ 245.00
BTC	600-140	Rabbit	Rabbit IgG	100 ug	WB, ELISA,	Hu	\$ 220.00
Cadherin (pan)	500-2364	Rabbit	Rabbit IgG	100 ug	IHC(P)	Hu	\$ 245.00
Cadherin-E	500-3464	Rabbit	Rabbit IgG	100 ug	IHC(P)	Hu	\$ 245.00
Calcitonin	500-1154	Rabbit	Rabbit IgG	100 ug	IHC(P)	Hu, Ms, Rt, Mk,Dg	\$ 245.00
Calretinin	500-1174	Rabbit	Rabbit IgG	100 ug	IHC(P)	Hu, Ms, Rt	\$ 245.00
Calumenin	600-640	Rabbit	Rabbit IgG	100 ug	WB, ELISA	Hu, Ms, Rt	\$ 245.00
CaM Kinase IV	500-10604	Rabbit	Rabbit IgG	100 ug	IHC-P, WB	Hu, Rt	\$ 245.00
CamKII(pT286)	600-270	Rabbit	Rabbit IgG	100 ug	WB, ELISA, IP	Hu	\$ 230.00
Casein (kappa)	600-830	Rabbit	Rabbit IgG	100 ug	WB, ELISA	Ms	\$ 220.00
Caspase 1	500-3914	Rabbit	Rabbit IgG	100 ug	IHC(P), WB, IP	Hu, Ms, Rt	\$ 245.00
Caspase 2	500-7174	Rabbit	Rabbit IgG	100 ug	WB	Hu, Ms, Rt, Ck	\$ 245.00
Caspase 5	500-7184	Rabbit	Rabbit IgG	100 ug	WB	Hu, Ms, Rt, Rb, Co,Ha	\$ 245.00
Caspase 6	500-7194	Rabbit	Rabbit IgG	100 ug	WB	Hu, Rt, Ms	\$ 245.00
Caspase 7	500-2274	Rabbit	Rabbit IgG	100 ug	IHC(P), WB	Hu	\$ 245.00
Caspase 8	500-2284	Rabbit	Rabbit IgG	100 ug	IHC(P), WB, IP	Hu	\$ 245.00
Caspase 9	500-2294	Rabbit	Rabbit IgG	100 ug	IHC(P), WB, IP	Hu	\$ 245.00
Caspase 10	500-10854	Rabbit	Rabbit IgG	100 ug	IHC-P	Hu	\$ 245.00
Caspase 12	500-9544	Rabbit	Rabbit IgG	100 ug	WB	Hu, Ms, Rt	\$ 245.00
Caspase 13	500-9554	Rabbit	Rabbit IgG	100 ug	WB	Hu, Ms, Rt	\$ 245.00
Catenin alpha	500-3334	Rabbit	Rabbit IgG	100 ug	IHC(P), WB	Hu, Ms	\$ 245.00
Catenin beta	500-2264	Rabbit	Rabbit IgG	100 ug	IHC(P), WB, IP	Hu, Ms, Rt	\$ 245.00
Catenin gamma	500-3684	Rabbit	Rabbit IgG	100 ug	IHC(P), WB, IP	Hu, Ms, Rt	\$ 245.00
Catenin-b (pS675)	500-8864	Rabbit	Rabbit IgG	100 ug	WB, IP	Hu, Ms, Rt	\$ 245.00
Catenin-beta (Paired 33/37)	602-590	Rabbit	Rabbit IgG	100 ug	ELISA, WB, IP	Hu, Ms, Rt	\$ 245.00

Description	Catalogue	Host	Isotyping	Size	Application	Cross Reactivity	Price
Catenin-beta (Paired S675)	630-340	Rabbit	Rabbit IgG	100 ug	ELISA, WB, IP	Hu, Ms, Rt	\$ 215.00
Catenin-beta (pS33)	601-980	Rabbit	Rabbit IgG	100 ug	ELISA, WB, IP	Hu, Ms, Rt	\$ 245.00
Catenin-beta (pS33/37)	601-990	Rabbit	Rabbit IgG	100 ug	ELISA, WB, IP	Hu, Ms, Rt	\$ 245.00
Catenin-beta (pS37)	602-600	Rabbit	Rabbit IgG	100 ug	ELISA, WB, IP	Hu, Ms, Rt	\$ 245.00
Catenin-Delta1 (Paired Y228)	602-050	Rabbit	Rabbit IgG	100 ug	ELISA, WB, IP	Hu, Ms, Rt	\$ 215.00
Catenin-Delta1 (Paired Y280)	602-070	Rabbit	Rabbit IgG	100 ug	ELISA, WB, IP	Hu, Ms, Rt	\$ 215.00
Catenin-Delta1 (Paired Y96)	602-030	Rabbit	Rabbit IgG	100 ug	ELISA, WB, IP	Hu, Ms, Rt	\$ 215.00
Catenin-Delta1 (pY228)	602-040	Rabbit	Rabbit IgG	100 ug	ELISA, WB, IP	Hu, Ms, Rt	\$ 245.00
Catenin-Delta1 (pY280)	602-060	Rabbit	Rabbit IgG	100 ug	ELISA, WB, IP	Hu, Ms, Rt	\$ 245.00
Catenin-Delta1 (pY96)	602-020	Rabbit	Rabbit IgG	100 ug	ELISA, WB, IP	Hu, Ms, Rt	\$ 245.00
Cathepsin D	500-2824	Rabbit	Rabbit IgG	100 ug	IHC(P)	Hu	\$ 245.00
CCR1	602-440	Rabbit	Rabbit IgG	100 ug	ELISA, WB, IP	Hu	\$ 220.00
CCR10	500-13544	Rabbit	Rabbit IgG	100 ug	WB	Hu	\$ 245.00
CCR5	500-9574	Rabbit	Rabbit IgG	100 ug	WB	Hu	\$ 245.00
CCR8	500-9584	Rabbit	Rabbit IgG	100 ug	IHC-P, WB	Hu	\$ 245.00
CCZ1	630-160	Rabbit	Rabbit IgG	100ug	ELISA, WB	Hu, Ms,	\$ 245.00
CD1a	500-4714	Rabbit	Rabbit IgG	100 ug	WB	Hu	\$ 245.00
CD2	500-3044	Rabbit	Rabbit IgG	100 ug	IHC(P)	Hu	\$ 245.00
CD3	500-1254	Rabbit	Rabbit IgG	100 ug	IHC(P), WB	Hu, Mk, Dg	\$ 245.00
CD3 zeta	500-3054	Rabbit	Rabbit IgG	100 ug	IHC(P), WB, IP	Hu, Ms, Rt	\$ 245.00
CD4	500-4704	Rabbit	Rabbit IgG	100 ug	WB	Hu	\$ 245.00
CD5	500-2474	Rabbit	Rabbit IgG	100 ug	IHC(P)	Hu	\$ 245.00
CD8	500-2484	Rabbit	Rabbit IgG	100 ug	IHC(P)	Hu	\$ 245.00
CD9	500-11014	Rabbit	Rabbit IgG	100 ug	IHC-P, WB	Hu	\$ 245.00
CD10	500-10454	Rabbit	Rabbit IgG	100 ug	WB	Hu	\$ 245.00
CD11b	500-10944	Rabbit	Rabbit IgG	100 ug	WB, IHC(P)	Hu	\$ 245.00
CD13	630-900	Rabbit	Rabbit IgG	100ug	ELISA, WB	Hu, Ms, Rt,	\$ 245.00
CD14	500-10554	Rabbit	Rabbit IgG	100 ug	WB	Hu	\$ 245.00
CD20	500-2564	Rabbit	Rabbit IgG	100 ug	IHC(P), WB, IP	Hu	\$ 245.00
CD23	500-3024	Rabbit	Rabbit IgG	100 ug	IHC(P)	Hu	\$ 245.00
CD25	500-13564	Rabbit	Rabbit IgG	100 ug	WB	Hu	\$ 245.00
CD29	500-13574	Rabbit	Rabbit IgG	100 ug	WB	Hu	\$ 245.00

Description	Catalogue	Host	Isotyping	Size	Application	Cross Reactivity	Price
CD30	500-13484	Rabbit	Rabbit IgG	100 ug	IHC-P, WB	Hu	\$ 245.00
CD31	500-11114	Rabbit	Rabbit IgG	100 ug	IHC-P	Hu	\$ 245.00
CD34	500-4644	Rabbit	Rabbit IgG	100 ug	WB	Hu	\$ 245.00
CD38	500-3254	Rabbit	Rabbit IgG	100 ug	IHC(P)	Hu	\$ 245.00
CD40	500-3704	Rabbit	Rabbit IgG	100 ug	IHC(P), WB, IP	Hu, Ms, Rt	\$ 245.00
CD44	630-640	Rabbit	Rabbit IgG	100ug	ELISA, WB	Hu, Ms, Rt,	\$ 245.00
CD45/LCA	500-10564	Rabbit	Rabbit IgG	100 ug	WB	Hu	\$ 245.00
CD54	500-10934	Rabbit	Rabbit IgG	100 ug	WB	Hu	\$ 245.00
CD72	500-10924	Rabbit	Rabbit IgG	100 ug	WB	Hu	\$ 245.00
CD79a	500-2494	Rabbit	Rabbit IgG	100 ug	IHC(P), WB, IF	Hu, Ms, Rt	\$ 229.00
CD81	630-910	Rabbit	Rabbit IgG	100ug	ELISA, WB, FC	Hu, Ms, Rt,	\$ 245.00
CD95	500-2504	Rabbit	Rabbit IgG	100 ug	IHC(P)	Hu	\$ 245.00
CD99	500-3394	Rabbit	Rabbit IgG	100 ug	IHC(P)	Hu	\$ 245.00
CD105	500-4234	Rabbit	Rabbit IgG	100 ug	IHC(P)	Hu	\$ 245.00
CD117 (kit)	600-970	Rabbit	Rabbit IgG	100 ug	WB, ELISA IHC(P)	Hu, Ms, Rt	\$ 225.00
CD117/Kit (IN)/c-Kit	601-290	Rabbit	Rabbit IgG	100 ug	IHC(P), WB	Hu	\$ 245.00
CD117/Kit (NT)/c-Kit	601-280	Rabbit	Rabbit IgG	100 ug	IHC(P), WB	Hu	\$ 245.00
CD133	600-190	Rabbit	Rabbit IgG	100 ug	WB, ELISA, IP; IHC	Hu, Ms, Rt	\$ 215.00
CD133 (Biotinylated)	600-19B	Rabbit	Rabbit IgG	100 ug	WB, ELISA, IP; IHC	Hu, Ms, Rt	\$ 245.00
CD136 (RON)	601-940	Rabbit	Rabbit IgG	100 ug	ELISA, WB, IP	Hu	\$ 215.00
CD136 (RON) (Nonphosphspecific)	601-930	Rabbit	Rabbit IgG	100 ug	ELISA, WB, IP	Hu	\$ 245.00
CD136 (RON) (pY1238)	601-910	Rabbit	Rabbit IgG	100 ug	ELISA, WB, IP	Hu	\$ 245.00
CD136 (RON) (pY1238/1239)	601-900	Rabbit	Rabbit IgG	100 ug	ELISA, WB, IP	Hu	\$ 245.00
CD136 (RON) (pY1239)	601-920	Rabbit	Rabbit IgG	100 ug	ELISA, WB, IP	Hu	\$ 245.00
CD138	500-4564	Rabbit	Rabbit IgG	100 ug	IHC(P)	Hu	\$ 245.00
CD146	500-11134	Rabbit	Rabbit IgG	100 ug	IHC-P	Hu	\$ 245.00
CD147/EMMPRIN	500-10534	Rabbit	Rabbit IgG	100 ug	WB	Hu	\$ 245.00
CD154	500-13554	Rabbit	Rabbit IgG	100 ug	WB	Hu	\$ 245.00
CD156b	601-270	Rabbit	Rabbit IgG	100 ug	IHC(P), WB	Hu, Ms, Rt	\$ 245.00
CD156b (IN)	600-870	Rabbit	Rabbit IgG	100 ug	WB, ELISA	Hu, Ms	\$ 220.00
CD156b (NT)	600-880	Rabbit	Rabbit IgG	100 ug	WB, ELISA	Hu, Ms	\$ 220.00
CD253/TRAIL (CT)	600-950	Rabbit	Rabbit IgG	100 ug	WB, ELISA	Hu	\$ 225.00



Description	Catalogue	Host	Isotyping	Size	Application	Cross Reactivity	Price
CD253/TRAIL (IN2)	600-940	Rabbit	Rabbit IgG	100 ug	WB, ELISA	Hu	\$ 225.00
CD253/TRAIL/ (TNFSF10) (IN1)	600-930	Rabbit	Rabbit IgG	100 ug	WB, ELISA	Hu, Ms	\$ 225.00
CDC2	602-180	Rabbit	Rabbit IgG	100 ug	ELISA, WB, IP	Hu, Ck, Bv	\$ 199.00
CDC2 (Paired Y15) (CDK1)	602-170	Rabbit	Rabbit IgG	100 ug	ELISA, WB, IP	Hu, Ck, Bv	\$ 220.00
CDC2 (pY15) (CDK1)	602-160	Rabbit	Rabbit IgG	100 ug	ELISA, WB, IP	Hu, Ck, Bv	\$ 245.00
CDC25b	601-630	Rabbit	Rabbit IgG	100 ug	Elisa, WB, IHC	Hu	\$ 245.00
CDC25b (Paired S42)	601-620	Rabbit	Rabbit IgG	100 ug	Elisa, WB, IHC	Hu	\$ 245.00
CDC25b(pS42)	601-610	Rabbit	Rabbit IgG	100 ug	Elisa, WB, IHC	Hu	\$ 245.00
CDC25C(pS216)	601-640	Rabbit	Rabbit IgG	100 ug	Elisa, WB, IHC	Hu	\$ 245.00
CDC34	500-7214	Rabbit	Rabbit IgG	100 ug	WB	Hu	\$ 245.00
CDC37	500-7224	Rabbit	Rabbit IgG	100 ug	WB	Hu,Ms	\$ 245.00
Cdk3	500-7264	Rabbit	Rabbit IgG	100 ug	WB	Hu, Ms, Rt	\$ 235.00
Cdk8	500-7304	Rabbit	Rabbit IgG	100 ug	WB, IP, IF, KA	Hu, Ms, Rt	\$ 245.00
Cdk9	602-390	Rabbit	Rabbit IgG	100 ug	ELISA, WB, IP	Hu	\$ 220.00
c-erbB-2	500-2444	Rabbit	Rabbit IgG	100 ug	IHC(P), WB, IP	Hu, Ms, Rt	\$ 245.00
c-erbB2 (pY1221/Y1222) (HER2)	500-11744	Rabbit	Rabbit IgG	100 ug	IHC, ELISA	Hu, Ms	\$ 225.00
c-erbB2 (pY877) (HER2)	500-11754	Rabbit	Rabbit IgG	100 ug	IHC, ELISA	Hu, Ms	\$ 225.00
c-erbB3	500-3434	Rabbit	Rabbit IgG	100 ug	IHC(P), IP	Hu	\$ 245.00
C-erbB3/HER3	602-540	Rabbit	Rabbit IgG	100 ug	ELISA, WB, IP	Hu	\$ 199.00
C-erbB3/HER3 (Paired Y1283)	602-530	Rabbit	Rabbit IgG	100 ug	ELISA, WB, IP	Hu	\$ 245.00
C-erbB3/HER3 (pY1283)	602-520	Rabbit	Rabbit IgG	100 ug	ELISA, WB, IP	Hu	\$ 245.00
c-erbB-4	500-2764	Rabbit	Rabbit IgG	100 ug	IHC(P), WB, IP	Hu, Ms	\$ 245.00
c-fos	500-4464	Rabbit	Rabbit IgG	100 ug	IHC(P)	Hu, Rt, Ms	\$ 245.00
c-Fos(pThr232)	620-760	Rabbit	Rabbit IgG	100ug	ELISA, WB, IHC	Hu, Ms, Rt	\$ 245.00
Chromogranin A	500-1524	Rabbit	Rabbit IgG	100 ug	IHC(P)	Hu, Rt, Mk	\$ 199.00
CIS-1	500-9594	Rabbit	Rabbit IgG	100 ug	WB	Hu	\$ 245.00
c-Jun	500-4684	Rabbit	Rabbit IgG	100 ug	WB	Hu	\$ 245.00
c-Jun (pT239)	500-11604	Rabbit	Rabbit IgG	100 ug	IHC, WB, ELISA, IP	Hu, Ms	\$ 245.00
c-Jun(pS63)	601-330	Rabbit	Rabbit IgG	100 ug	ELISA, IHC(P), WB	Hu/Rt/Ms	\$ 245.00
Claudin 1	500-3414	Rabbit	Rabbit IgG	100 ug	IHC(P)	Hu, Ms, Rt	\$ 245.00
Claudin 2	500-3924	Rabbit	Rabbit IgG	100 ug	IHC(P)	Hu, Ms	\$ 245.00
Claudin 3	500-3834	Rabbit	Rabbit IgG	100 ug	IHC(P), WB	Hu, Ms, Rt	\$ 245.00

Description	Catalogue	Host	Isotyping	Size	Application	Cross Reactivity	Price
Claudin 4	500-3984	Rabbit	Rabbit IgG	100 ug	IHC(P), WB	Hu, Ms	\$ 245.00
Claudin 5	500-3754	Rabbit	Rabbit IgG	100 ug	IHC(P), WB	Hu, Ms	\$ 245.00
Claudin 7	500-10594	Rabbit	Rabbit IgG	100 ug	IHC-P	Hu, Ms, Rt	\$ 245.00
Claudin 10	500-10244	Rabbit	Rabbit IgG	100 ug	IHC-P	Hu, Ms, Rt	\$ 245.00
Claudin 11	500-8774	Rabbit	Rabbit IgG	100 ug	IHC(P)	Hu	\$ 245.00
Claudin 12	500-10724	Rabbit	Rabbit IgG	100 ug	WB	Hu	\$ 245.00
Claudin 14	500-10484	Rabbit	Rabbit IgG	100 ug	WB	Hu	\$ 245.00
c-Met	500-10614	Rabbit	Rabbit IgG	100 ug	IHC-P, WB	Hu	\$ 245.00
c-Myc	600-510	Rabbit	Rabbit IgG	100 ug	WB, ELISA		\$ 199.00
CNPY4	630-320	Rabbit	Rabbit IgG	100ug	WB, IP	Hu, Ms, Rt,	\$ 245.00
Coagulation Factor VIII (Cleaved form, C-Term)	601-970	Rabbit	Rabbit IgG	100 ug	ELISA, WB, IP	Hu	\$ 245.00
Coagulation Factor VIII (Cleaved form, N-term)	601-960	Rabbit	Rabbit IgG	100 ug	ELISA, WB, IP	Hu	\$ 245.00
Coagulation Factor VIII (Fused form)	601-950	Rabbit	Rabbit IgG	100 ug	ELISA, WB, IP	Hu	\$ 245.00
Collagen I	500-13604	Rabbit	Rabbit IgG	100 ug	WB	Hu	\$ 245.00
Connexin 43	500-2744	Rabbit	Rabbit IgG	100 ug	IHC(P), WB, IP	Hu, Ms, Rt	\$ 245.00
Connexin 43 (pS368)	602-960	Rabbit	Rabbit IgG	100ug	ELISA, WB, IHC	Hu, Ms, Rt	\$ 245.00
Corin (CT)	602-660	Rabbit	Rabbit IgG	100 ug	ELISA, WB, IP	Hu, Ms, Rt	\$ 245.00
Corin (IN)	602-650	Rabbit	Rabbit IgG	100 ug	ELISA, WB, IP	Hu, Ms, Rt	\$ 245.00
Corin (NT)	601-470	Rabbit	Rabbit IgG	100 ug	WB, IHC, IF	Ms, Rt	\$ 245.00
CREB	500-7354	Rabbit	Rabbit IgG	100 ug	WB	Hu, Ms, Rt	\$ 245.00
CREB(pS133)	600-280	Rabbit	Rabbit IgG	100 ug	WB, ELISA, IP	Hu	\$ 230.00
CRP (IN)	600-980	Rabbit	Rabbit IgG	100 ug	WB, ELISA	Hu, Ms	\$ 225.00
CRP (NT)	600-990	Rabbit	Rabbit IgG	100 ug	WB, ELISA	Hu	\$ 199.00
CRP (NT)	601-300	Rabbit	Rabbit IgG	100 ug	IHC(P), WB	Hu, Ms, Rt	\$ 245.00
CRTC-3	630-410	Rabbit	Rabbit IgG	100 ug	ELISA, WB, IP	Hu, Ms, Rt	\$ 245.00
Crystallin(A-Beta) (pS59)	630-400	Rabbit	Rabbit IgG	100ug	ELISA, WB	Hu, Ms, Rt, Bv	\$ 245.00
CSF-1R	602-130	Rabbit	Rabbit IgG	100 ug	ELISA, WB, IP	Hu, Ms, Rt	\$ 199.00
CSF-1R (Paired Y723)	602-120	Rabbit	Rabbit IgG	100 ug	ELISA, WB, IP	Hu, Ms, Rt	\$ 220.00
CSF-1R (pY723)	602-110	Rabbit	Rabbit IgG	100 ug	ELISA, WB, IP	Hu, Ms, Rt	\$ 245.00
c-Src	500-7364	Rabbit	Rabbit IgG	100 ug	IP	Hu, Ms, Rt	\$ 245.00
Cyclin A	500-7384	Rabbit	Rabbit IgG	100 ug	IHC-P, WB, IP	Hu, Ms, Rt	\$ 245.00
Cyclin B1	500-4104	Rabbit	Rabbit IgG	100 ug	IHC(P), WB, IP	Hu, Ms, Rt	\$ 245.00

Description	Catalogue	Host	Isotyping	Size	Application	Cross Reactivity	Price
Cyclin C	500-7394	Rabbit	Rabbit IgG	100 ug	WB, IP, IF, KA	Hu, Ms, Rt, Dg	\$ 245.00
Cyclin D1	500-1544	Rabbit	Rabbit IgG	100 ug	IHC(P), WB, IP, IF, KA	Hu, Ms, Rt	\$ 240.00
Cyclin E	500-3604	Rabbit	Rabbit IgG	100 ug	IHC(P), WB, IP, IF, KA	Hu, Ms	\$ 245.00
Cyclin G1	500-10684	Rabbit	Rabbit IgG	100 ug	WB	Hu	\$ 245.00
Cytochrome C	500-12414	Rabbit	Rabbit IgG	100 ug	IHC-P	Hu	\$ 245.00
Cytokeratin 7	500-12354	Rabbit	Rabbit IgG	100 ug	IHC-P	Hu	\$ 245.00
Cytokeratin 8	500-3264	Rabbit	Rabbit IgG	100 ug	IHC(P)	Hu	\$ 199.00
Cytokeratin 14	500-2624	Rabbit	Rabbit IgG	100 ug	IHC(P), WB	Hu	\$ 209.00
Cytokeratin 18 (pS33)	630-110	Rabbit	Rabbit IgG	100ug	ELISA, WB	Hu	\$ 245.00
Cytokeratin 18(Paired S33)	630-120	Rabbit	Rabbit IgG	100ug	ELISA, WB	Hu	\$ 245.00
Cytokeratin 19 (CK-19)	602-670	Rabbit	Rabbit IgG	100 ug	ELISA, WB, IP	Hu, Ms, Rt, Bv	\$ 245.00
Cytokeratin 20	500-13674	Rabbit	Rabbit IgG	100 ug	WB	Hu	\$ 245.00
DBF4	601-710	Rabbit	Rabbit IgG	100 ug	Elisa, WB	Hu/Rt/Ms	\$ 245.00
DBF4B	601-790	Rabbit	Rabbit IgG	100 ug	ELISA., WB	Hu	\$ 245.00
DCC	601-460	Rabbit	Rabbit IgG	100 ug	WB	Hu	\$ 245.00
DCLK1	630-630	Rabbit	Rabbit IgG	100ug	ELISA, WB	Hu, Ms, Rt, Bv	\$ 245.00
DCLK1(pS30)	630-620	Rabbit	Rabbit IgG	100ug	ELISA, WB	Hu, Ms, Rt, Bv	\$ 245.00
Desmin	602-300	Rabbit	Rabbit IgG	100 ug	ELISA, WB, IP	Hu, Ms, Rt	\$ 199.00
Desmin (Paired T76/77)	602-290	Rabbit	Rabbit IgG	100 ug	ELISA, WB, IP	Hu, Ms, Rt	\$ 220.00
Desmin (pT76/77)	602-280	Rabbit	Rabbit IgG	100 ug	ELISA, WB, IP	Hu, Ms, Rt	\$ 245.00
DLL4	630-500	Rabbit	Rabbit IgG	100ug	ELISA, WB	Hu, Ms, Rt, Bv	\$ 245.00
dNK (Deoxynucleoside Kinase)	601-680	Rabbit	Rabbit IgG	100 ug	WB, IHC	Drosph	\$ 245.00
Dystrophin	630-170	Rabbit	Rabbit IgG	100ug	ELISA, WB	Hu, Ms,	\$ 245.00
E2F2	500-13614	Rabbit	Rabbit IgG	100 ug	WB	Hu, Ms, Rt	\$ 245.00
E2F5	500-7534	Rabbit	Rabbit IgG	100 ug	WB	Hu, Ms, Rt	\$ 245.00
ECRG4	630-230	Rabbit	Rabbit IgG	100ug	ELISA, WB, IHC	Hu, Rt, Ms	\$ 245.00
EGFR	500-2454	Rabbit	Rabbit IgG	100 ug	IHC(P), WB	Hu	\$ 245.00
EGFR(pS1070)	500-11684	Rabbit	Rabbit IgG	100 ug	IHC, ELISA	Hu, Ms	\$ 240.00
EGFR(pY1092)	500-12224	Rabbit	Rabbit IgG	100 ug	IHC, ELISA	Hu, Ms, Rt	\$ 235.00
EGFR(pY1173)	600-290	Rabbit	Rabbit IgG	100 ug	WB, ELISA, IP	Hu	\$ 230.00
ELK-1(pS383)	500-12234	Rabbit	Rabbit IgG	100 ug	IHC, IP ELISA	Hu, Ms, Rt	\$ 245.00
ELK1(pS389)	500-11694	Rabbit	Rabbit IgG	100 ug	IHC, ELISA, IP	Hu, Ms	\$ 245.00

Description	Catalogue	Host	Isotyping	Size	Application	Cross Reactivity	Price
ELK1(pT417)	500-11704	Rabbit	Rabbit IgG	100 ug	IHC, ELISA, IP	Hu, Ms	\$ 245.00
Endostatin	500-5004	Rabbit	Rabbit IgG	100 ug	WB, IHC-P	Hu	\$ 245.00
eNOS	500-4114	Rabbit	Rabbit IgG	100 ug	IHC(P), WB	Hu, Ms, Rt	\$ 245.00
Eotaxin	500-9714	Rabbit	Rabbit IgG	100 ug	WB	Hu	\$ 245.00
Ephrin A4	500-11154	Rabbit	Rabbit IgG	100 ug	IHC-P	Hu	\$ 245.00
Ephrin B1	500-13624	Rabbit	Rabbit IgG	100 ug	WB	Hu	\$ 245.00
Ephrin B3	500-11224	Rabbit	Rabbit IgG	100 ug	IHC-P	Hu	\$ 245.00
ER (Paired S167)	601-890	Rabbit	Rabbit IgG	100 ug	ELISA, IHC(P), WB	Hu, Ms, Rt	\$ 245.00
ER(Paired S305)	620-230	Rabbit	Rabbit IgG	100ug	IHC,ELISA	Hu, Ms	\$ 225.00
ER(pS118)	600-300	Rabbit	Rabbit IgG	100 ug	WB, ELISA, IP	Hu	\$ 230.00
ER(pS167)	600-310	Rabbit	Rabbit IgG	100 ug	WB, ELISA, IP	Hu	\$ 230.00
ER(pS305)	620-220	Rabbit	Rabbit IgG	100 ug	IHC,ELISA	Hu, Ms	\$ 245.00
ER81	602-930	Rabbit	Rabbit IgG	100 ug	ELISA, WB, IHC	Ms, Hu, Rt	\$ 245.00
ERAB	500-10324	Rabbit	Rabbit IgG	100 ug	IHC-P, WB	Hu	\$ 225.00
ERK1	500-3564	Rabbit	Rabbit IgG	100 ug	IHC(P), WB, IP	Hu, Ms, Rt	\$ 245.00
ERK1/2 (P44-MAPK)	602-330	Rabbit	Rabbit IgG	100 ug	ELISA, WB, IP	Hu, Ms, Rt, Ck, Canis	\$ 199.00
ERK1/2 (P44-MAPK) (PairedT202/Y204)	602-320	Rabbit	Rabbit IgG	100 ug	ELISA, WB, IP	Hu, Ms, Rt, Ck, Canis	\$ 220.00
ERK1/2 (P44-MAPK) (pT202/pY204)	602-310	Rabbit	Rabbit IgG	100 ug	ELISA, WB, IP	Hu, Ms, Rt, Ck	\$ 245.00
ERK2	500-3974	Rabbit	Rabbit IgG	100 ug	IHC(P), WB, IP	Hu, Ms, Rt	\$ 245.00
Estrogen Receptor (ER) (pS118)	500-12264	Rabbit	Rabbit IgG	100 ug	IHC, WB, ELISA	Hu, Ms	\$ 245.00
Estrogen Receptor (ER) (pS167)	500-8924	Rabbit	Rabbit IgG	100 ug	WB, IP	Hu	\$ 245.00
Estrogen Receptor alpha (ER-alpha)	500-1644	Rabbit	Rabbit IgG	100 ug	IHC(P), WB	Hu, Ms, Rt	\$ 245.00
Estrogen Receptor beta (ER beta)	500-4744	Rabbit	Rabbit IgG	100 ug	WB	Hu	\$ 245.00
E-Tag	600-420	Rabbit	Rabbit IgG	100 ug	WB, ELISA, IP	Tag	\$ 199.00
EWSR	600-820	Rabbit	Rabbit IgG	100 ug	WB, ELISA	Hu, Ms, Rt	\$ 225.00
FAH (Fumarylacetoacetat Hydrolase)	602-910	Rabbit	Rabbit IgG	100 ug	ELISA, WB, IHC	Ms, Hu, Rt	\$ 245.00
FAK(pY576)	600-320	Rabbit	Rabbit IgG	100 ug	WB, ELISA, IP	Hu	\$ 230.00
FGF 4 (NT)	600-890	Rabbit	Rabbit IgG	100 ug	WB, ELISA	Hu, Ms, Rt	\$ 230.00
FGF4 (IN)	600-900	Rabbit	Rabbit IgG	100 ug	WB, ELISA	Hu, Ms, Rt	\$ 230.00
FGF4 (NT1)	600-910	Rabbit	Rabbit IgG	100 ug	WB, ELISA	Hu, Ms, Rt	\$ 230.00
FGF4 (NT2)	600-920	Rabbit	Rabbit IgG	100 ug	WB, ELISA	Hu, Ms, Rt	\$ 230.00
FGFR-1	500-10584	Rabbit	Rabbit IgG	100 ug	IHC-P	Hu	\$ 245.00

Description	Catalogue	Host	Isotyping	Size	Application	Cross Reactivity	Price
FGFR-2	500-10574	Rabbit	Rabbit IgG	100 ug	IHC-P	Hu	\$ 245.00
FGFR-3	500-10234	Rabbit	Rabbit IgG	100 ug	IHC-P, WB	Hu	\$ 245.00
Fibrinogen (gamma)	600-800	Rabbit	Rabbit IgG	100 ug	WB, ELISA	Hu, Ms	\$ 215.00
Fibulin-2	600-630	Rabbit	Rabbit IgG	100 ug	WB, ELISA	Hu, Rt, Ms	\$ 235.00
FKRP	620-830	Rabbit	Rabbit IgG	100ug	ELISA, WB, IHC	hu, Ms, Rt,	\$ 245.00
FLAG-Tag (DYKDDDDK)	610-020	Rabbit	Rabbit IgG	100 ug	WB, ELISA, IP	Tag	\$ 195.00
FLK-1	601-860	Rabbit	Rabbit IgG	100 ug	ELISA, IHC(P), WB	Hu	\$ 245.00
FLT1 Peptide	602-450	Rabbit	Rabbit IgG	100 ug	ELISA, WB, IP	Hu	\$ 220.00
FOXA-1	601-570	Rabbit	Rabbit IgG	100 ug	WB	Hu	\$ 245.00
FOXA-2	601-580	Rabbit	Rabbit IgG	100 ug	WB	Hu	\$ 245.00
FOXA-3	602-700	Rabbit	Rabbit IgG	100 ug	ELISA, WB, IP	Hu, Ms, Rt	\$ 245.00
FOXP1	602-460	Rabbit	Rabbit IgG	100 ug	ELISA, WB, IP	Hu	\$ 220.00
FOXP2	602-470	Rabbit	Rabbit IgG	100 ug	ELISA, WB, IP	Hu	\$ 220.00
FOXP3	602-480	Rabbit	Rabbit IgG	100 ug	ELISA, WB, IHC	Hu, Rt, Ms	\$ 220.00
FOXP4	602-490	Rabbit	Rabbit IgG	100 ug	ELISA, WB, IP	Hu	\$ 220.00
GABA Receptor 1	500-2884	Rabbit	Rabbit IgG	100 ug	IHC(P), WB, IP	Hu, Ms, Rt	\$ 245.00
GADD153	602-430	Rabbit	Rabbit IgG	100 ug	ELISA, WB, IP	Hu	\$ 220.00
GAPDH	630-790	Rabbit	Rabbit IgG	100ug	ELISA, WB	Hu, Ms, Rt,	\$ 245.00
GATA1	500-11724	Rabbit	Rabbit IgG	100 ug	IHC, WB, ELISA, IP	Hu, Ms	\$ 245.00
GATA1(pS142)	500-11714	Rabbit	Rabbit IgG	100 ug	IHC, WB, ELISA, IP	Hu, Ms	\$ 245.00
GATA-6	601-560	Rabbit	Rabbit IgG	100 ug	WB	Hu	\$ 245.00
GDF-8	620-870	Rabbit	Rabbit IgG	100ug	ELISA, WB, IHC	Hu	\$ 245.00
GFP	610-030	Rabbit	Rabbit IgG	100 ug	WB, ELISA, IP	Tag	\$ 220.00
Glucagon	500-6944	Rabbit	Rabbit IgG	100 ug	IHC-P	Hu, Ms, Rt	\$ 210.00
GluR 2/3	500-3004	Rabbit	Rabbit IgG	100 ug	IHC(P), WB, IP	Hu, Ms, Rt	\$ 245.00
GluR1	500-3064	Rabbit	Rabbit IgG	100 ug	IHC(P), WB	Hu, Ms, Rt	\$ 245.00
GluR4	500-2904	Rabbit	Rabbit IgG	100 ug	IHC(P), WB, IP	Hu, Ms, Rt	\$ 245.00
GluR6/7	500-2934	Rabbit	Rabbit IgG	100 ug	IHC(P), WB, IP	Hu, Ms, Rt	\$ 245.00
GLUT-1	500-2844	Rabbit	Rabbit IgG	100 ug	IHC(P), WB, IF	Hu, Ms, Rt	\$ 245.00
GLUT-3	500-3274	Rabbit	Rabbit IgG	100 ug	IHC(P), WB, ELISA	Hu	\$ 245.00
Glycogen Synthase Kinase 3b (GSK3b)	500-7614	Rabbit	Rabbit IgG	100 ug	WB	Hu, Ms, Rt, Bv	\$ 245.00
GPCR119	600-710	Rabbit	Rabbit IgG	100 ug	WB, ELISA	Ms	\$ 225.00

Description	Catalogue	Host	Isotyping	Size	Application	Cross Reactivity	Price
GSK3a(pS21)	600-330	Rabbit	Rabbit IgG	100 ug	WB, ELISA, IP	Hu, Ms, Rt	\$ 230.00
GSK-3alpha	500-2914	Rabbit	Rabbit IgG	100 ug	IHC(P), WB	Hu, Ms, Rt	\$ 245.00
GSK-3b	602-210	Rabbit	Rabbit IgG	100 ug	ELISA, WB, IP	Hu, Ms, Rt	\$ 199.00
GSK-3b (Paired Y216)	602-200	Rabbit	Rabbit IgG	100 ug	ELISA, WB, IP	Hu, Ms, Rt	\$ 199.00
GSK-3b (pY216)	602-190	Rabbit	Rabbit IgG	100 ug	ELISA, WB, IP	Hu, Ms, Rt	\$ 245.00
GSK3b(Paired S9)	600-050	Rabbit	Rabbit IgG	100 ug	WB, IP, ELISA	Hu, Ms, Rt	\$ 215.00
GSK3b(pS9)	600-340	Rabbit	Rabbit IgG	100 ug	WB, ELISA, IP	Hu, Ms, Rt	\$ 230.00
GST	500-4434	Rabbit	Rabbit IgG	100 ug	WB	Tag	\$ 245.00
H1N1(CT) (Influenza A virus)	601-240	Rabbit	Rabbit IgG	100 ug	WB, ELISA	Hu	\$ 225.00
H2A(Ubiquited)	602-820	Rabbit	Rabbit IgG	100 ug	ELISA, WB, IP	Hu, Ms, Rt	\$ 245.00
H2N2 (Influenza A virus)	601-250	Rabbit	Rabbit IgG	100 ug	WB, ELISA	Hu	\$ 225.00
H5N1(NT) (Influenza A virus)	601-230	Rabbit	Rabbit IgG	100 ug	WB, ELISA	Hu	\$ 225.00
HA (Hemagglutinin) Tag	500-7644	Rabbit	Rabbit IgG	100 ug	WB, IP	Hu	\$ 220.00
Hepatitis B virus core Ag	500-1704	Rabbit	Rabbit IgG	100 ug	IHC(P)	Hu	\$ 149.00
HIF, alpha	602-510	Rabbit	Rabbit IgG	100 ug	ELISA, WB, IP	Ms, Rt, Hu	\$ 245.00
His-Tag	600-500	Rabbit	Rabbit IgG	100 ug	WB, ELISA	Tag	\$ 189.00
Histone H2A	630-200	Rabbit	Rabbit IgG	100ug	ELISA, WB, IHC	Hu, Rt, Ms, Bv , Ck, Dg	\$ 245.00
Histone H3	620-360	Rabbit	Rabbit IgG	100 ug	Wb, ELISA, IP, IHC	Hu, Ms, Rt, Ck, Bv	\$ 199.00
Histone H3 (Acetylation at K4)	620-450	Rabbit	Rabbit IgG	100ug	ELISA, WB, IHC	Hu, Ms, Rt	\$ 245.00
Histone H3 (Acetylation at K9)	620-460	Rabbit	Rabbit IgG	100ug	ELISA, WB, IHC	Hu, ms, Rt	\$ 245.00
Histone H3 (Citrulline at N-term)	630-180	Rabbit	Rabbit IgG	100ug	ELISA, WB, IHC	Hu, Rt, Ms, Bv, Ck	\$ 245.00
Histone H3 (pSer10)	602-810	Rabbit	Rabbit IgG	100 ug	ELISA, WB, IP	Hu, Ms, Rt	\$ 245.00
Histone H3(Dimethylation at Lys27)	602-790	Rabbit	Rabbit IgG	100 ug	ELISA, WB, IP	Hu, Ms, Rt	\$ 245.00
Histone H3(Dimethylation at Lys4)	602-770	Rabbit	Rabbit IgG	100 ug	ELISA, WB, IP	Hu, Ms, Rt	\$ 245.00
Histone H3(Dimethylation at Lys9)	602-780	Rabbit	Rabbit IgG	100 ug	ELISA, WB, IP	Hu, Ms, Rt	\$ 245.00
Histone H3(monomethylated Histidine at H39)	630-370	Rabbit	Rabbit IgG	100 ug	ELISA, WB, IP	Hu, Ms, Rt	\$ 245.00
Histone H3(Monomethylation at Lys27)	602-760	Rabbit	Rabbit IgG	100 ug	ELISA, WB, IP	Hu, Ms, Rt	\$ 245.00
Histone H3(Monomethylation at Lys4)	602-740	Rabbit	Rabbit IgG	100 ug	ELISA, WB, IP	Hu, Ms, Rt	\$ 245.00
Histone H3(Monomethylation at Lys9)	602-750	Rabbit	Rabbit IgG	100 ug	ELISA, WB, IP	Hu, Ms, Rt	\$ 245.00
Histone H3(Non-Methylation at H39)	630-380	Rabbit	Rabbit IgG	100 ug	ELISA, WB, IP	Hu, Ms, Rt	\$ 245.00
Histone H3(Trimethylation at Lys27)	602-730	Rabbit	Rabbit IgG	100 ug	ELISA, WB, IP	Hu, Ms, Rt	\$ 245.00
Histone H3(Trimethylation at Lys4)	602-710	Rabbit	Rabbit IgG	100 ug	ELISA, WB, IP	Hu, Ms, Rt	\$ 245.00



Description	Catalogue	Host	Isotyping	Size	Application	Cross Reactivity	Price
Histone H3(Trimethylation at Lys9)	602-720	Rabbit	Rabbit IgG	100 ug	ELISA, WB, IP	Hu, Ms, Rt	\$ 245.00
HPV (IN) (Human Papillomavirus), E7 protein	620-920	Rabbit	Rabbit IgG	100ug	ELISA, WB, IHC	hu, Ms, Rt,	\$ 245.00
HPV (NT) (Human Papillomavirus), E7 protein	620-930	Rabbit	Rabbit IgG	100ug	ELISA, WB, IHC	Hu, Ms, Rt,	\$ 245.00
HRP	500-8634	Rabbit	Rabbit IgG	100 ug	ELISA	all species	\$ 199.00
HSP84	500-5804	Rabbit	Rabbit IgG	100 ug	WB, IP, IHC-P, IF	Hu, Ms, Rt	\$ 245.00
HSP86	500-5794	Rabbit	Rabbit IgG	100 ug	WB, IP, IHC-P, IF	Hu, Ms, Rt	\$ 245.00
HYOU1	600-620	Rabbit	Rabbit IgG	100 ug	WB, ELISA	Hu, Ms, Rt	\$ 240.00
Id3	602-380	Rabbit	Rabbit IgG	100 ug	ELISA, WB, IP	Hu	\$ 220.00
IgA	500-1744	Rabbit	Rabbit IgG	100 ug	IHC(P)	Hu	\$ 119.00
IGF-1R (pY1161)	500-12304	Rabbit	Rabbit IgG	100 ug	IHC, ELISA	Hu, Ms, Rt	\$ 245.00
IGF-I	500-3724	Rabbit	Rabbit IgG	100 ug	IHC(P)	Hu, Ms, Rt	\$ 245.00
IgG	500-1754	Rabbit	Rabbit IgG	100 ug	IHC(P)	Hu	\$ 119.00
IGHA1	601-730	Rabbit	Rabbit IgG	100 ug	ELISA., WB	Hu	\$ 245.00
IGHA2	601-740	Rabbit	Rabbit IgG	100 ug	ELISA., WB	Hu	\$ 245.00
IgM	500-1764	Rabbit	Rabbit IgG	100 ug	IHC(P)	Hu	\$ 119.00
I-Kappa-B Kinase b (IKKb)	500-7714	Rabbit	Rabbit IgG	100 ug	WB, IP	Hu, Ms, Rt	\$ 245.00
IkBα (NFKB1A)	602-240	Rabbit	Rabbit IgG	100 ug	ELISA, WB, IP	Hu, Ms, Rt	\$ 199.00
IkBα (Paired S32/36) (NFKB1A)	602-230	Rabbit	Rabbit IgG	100 ug	ELISA, WB, IP	Hu, Ms, Rt	\$ 220.00
IkBα (pS32/36) (NFKB1A)	602-220	Rabbit	Rabbit IgG	100 ug	ELISA, WB, IP	Hu, Ms, Rt	\$ 245.00
IKK-α (Paired 176/180)	620-860	Rabbit	Rabbit IgG	100ug	ELISA, WB, IHC	hu, Ms, Rt,	\$ 245.00
IKK-α	601-100	Rabbit	Rabbit IgG	100 ug	WB, ELISA, IHC	Hu	\$ 245.00
IKK-β (CT)	620-850	Rabbit	Rabbit IgG	100ug	ELISA, WB, IHC	hu, Ms, Rt,	\$ 245.00
IKK-β (pY199)	620-840	Rabbit	Rabbit IgG	100ug	ELISA, WB, IHC	hu, Ms, Rt,	\$ 245.00
IKK-α (pS176/180)	620-820	Rabbit	Rabbit IgG	100ug	ELISA, WB, IHC	hu, Ms, Rt,	\$ 245.00
iNOS	500-3744	Rabbit	Rabbit IgG	100 ug	IHC(P), WB	Hu, Ms, Rt	\$ 245.00
IRAK	500-7744	Rabbit	Rabbit IgG	100 ug	WB	Hu, Ms, Rt	\$ 245.00
IRAK-2	500-9834	Rabbit	Rabbit IgG	100 ug	WB	Hu	\$ 245.00
IRAK-M	500-9844	Rabbit	Rabbit IgG	100 ug	WB	Hu, Ms, Rt	\$ 245.00
IRS-1	500-12594	Rabbit	Rabbit IgG	100 ug	IHC-P	Hu	\$ 245.00
IRS-1 (pS312)	500-8984	Rabbit	Rabbit IgG	100 ug	WB, IP	Hu/Rt/Ms	\$ 245.00
IRS-1(Paired S312)	602-620	Rabbit	Rabbit IgG	100 ug	ELISA, WB, IP	Hu, Ms, Rt	\$ 245.00
IRS1(pY612)	601-600	Rabbit	Rabbit IgG	100 ug	Elisa, WB, IHC	Hu, Rt, Ms, Ck, canis,	\$ 245.00

Description	Catalogue	Host	Isotyping	Size	Application	Cross Reactivity	Price
IRS-2	602-640	Rabbit	Rabbit IgG	100 ug	ELISA, WB, IP	Hu, Ms, Rt	\$ 225.00
IRS-2 (Paired S731)	602-630	Rabbit	Rabbit IgG	100 ug	ELISA, WB, IP	Hu, Ms, Rt	\$ 245.00
IRS-2 (pS731)	500-9004	Rabbit	Rabbit IgG	100 ug	WB, IP	Hu/Rt/Ms	\$ 245.00
IRS2(pS1001)	600-720	Rabbit	Rabbit IgG	100 ug	WB, IP	Hu	\$ 245.00
JAK1	600-350	Rabbit	Rabbit IgG	100 ug	WB, ELISA, IP	Hu, Ms, Rt	\$ 189.00
JAK2	600-360	Rabbit	Rabbit IgG	100 ug	WB, ELISA, IP	Hu, Ms, Rt	\$ 189.00
JAK2 (Paired Y1007/1008)	601-670	Rabbit	Rabbit IgG	100 ug	WB, ELISA,	Hu	\$ 245.00
JAK2(pY1007/Y1008)	620-150	Rabbit	Rabbit IgG	100 ug	WB, IP	Hu	\$ 245.00
JAK2(pY1007/Y1008)(Biotinylated)	620-151	Rabbit	Rabbit IgG	100 ug	WB, IP	Hu	\$ 245.00
JAK3	600-370	Rabbit	Rabbit IgG	100 ug	WB, ELISA, IP	Hu, Ms, Rt	\$ 189.00
JM4	602-410	Rabbit	Rabbit IgG	100 ug	ELISA, WB, IP	Hu	\$ 220.00
JNK Activating kinase (JNK1)	500-7764	Rabbit	Rabbit IgG	100 ug	WB	Hu, Ms, Rt	\$ 245.00
JNK/SAPK1(pT183/pY185)	600-380	Rabbit	Rabbit IgG	100 ug	WB, ELISA, IP	Hu, Rt	\$ 245.00
JunB (pS259)	500-11764	Rabbit	Rabbit IgG	100 ug	IHC, WB, ELISA, IP	Hu, Ms	\$ 245.00
JunB (pS79)	500-11774	Rabbit	Rabbit IgG	100 ug	IHC, ELISA, IP	Hu, Ms	\$ 245.00
JunD (pS255)	500-11784	Rabbit	Rabbit IgG	100 ug	IHC, ELISA, IP	Hu, Ms	\$ 245.00
Kappa Light Chain (B-Cell Marker)	500-1784	Rabbit	Rabbit IgG	100 ug	IHC(P)	Hu	\$ 199.00
KCNA3	630-520	Rabbit	Rabbit IgG	100ug	ELISA, WB	Hu, Ms, Rt, Bv	\$ 245.00
Ki-67	500-1874	Rabbit	Rabbit IgG	100 ug	IHC(P), WB	Hu, Rt	\$ 245.00
KIF6	620-880	Rabbit	Rabbit IgG	100ug	ELISA, WB	Hu	\$ 245.00
L1CAM	630-220	Rabbit	Rabbit IgG	100ug	ELISA, WB, IHC	Hu, Rt, Ms, Bv, Ck, Dg	\$ 245.00
L1CAM(pS1152)	630-210	Rabbit	Rabbit IgG	100ug	ELISA, WB, IHC	Hu, Rt, Ms, Bv, Ck, Dg	\$ 245.00
Lambda Light chain	500-1884	Rabbit	Rabbit IgG	100 ug	IHC(P)	Hu	\$ 199.00
Lamin B	500-13494	Rabbit	Rabbit IgG	100 ug	IHC-P, WB	Hu	\$ 245.00
Legumain	600-650	Rabbit	Rabbit IgG	100 ug	WB, ELISA	Hu, Ms, Rt	\$ 245.00
L-Plastin	600-760	Rabbit	Rabbit IgG	100 ug	WB, ELISA	Hu, Ms, Rt	\$ 245.00
LRP5 (Non-phospho)	601-020	Rabbit	Rabbit IgG	100 ug	ELISA, WB	Hu/Rt/Ms	\$ 245.00
LRP5 (phospho)	601-010	Rabbit	Rabbit IgG	100 ug	ELISA, WB	Hu/Rt/Ms	\$ 245.00
LRP6 (Non-phospho)	601-130	Rabbit	Rabbit IgG	100 ug	ELISA, WB	Hu/Rt/Ms	\$ 245.00
LRP6 (phospho)	601-060	Rabbit	Rabbit IgG	100 ug	ELISA, WB	Hu/Rt/Ms	\$ 245.00
LRRK2	602-570	Rabbit	Rabbit IgG	100 ug	ELISA, WB, IP, IHC	HU	\$ 245.00
LRRK2(Paired S1124)	620-960	Rabbit	Rabbit IgG	100ug	ELISA, WB, IHC	Hu, Ms, Rt,	\$ 245.00

Description	Catalogue	Host	Isotyping	Size	Application	Cross Reactivity	Price
LRRK2(paired S955)	630-260	Rabbit	Rabbit IgG	100ug	ELISA, WB	Hu, Ms, Rt, Bv	\$ 245.00
LRRK2(paired S973)	630-280	Rabbit	Rabbit IgG	100ug	ELISA, WB	Hu, Ms, Rt, Bv	\$ 245.00
LRRK2(Paired T1491)	630-050	Rabbit	Rabbit IgG	100ug	ELISA, WB	Hu, Ms, Rt, Bv	\$ 245.00
LRRK2(paired T1503)	630-070	Rabbit	Rabbit IgG	100ug	ELISA, WB	Hu, Ms, Rt, Bv	\$ 245.00
LRRK2(pS1124)	620-950	Rabbit	Rabbit IgG	100ug	ELISA, WB, IHC	Hu, Ms, Rt,	\$ 245.00
LRRK2(pS955)	630-250	Rabbit	Rabbit IgG	100ug	ELISA, WB	Hu, Ms, Rt, Bv	\$ 245.00
LRRK2(pS973)	630-270	Rabbit	Rabbit IgG	100ug	ELISA, WB	Hu, Ms, Rt, Bv	\$ 245.00
LRRK2(pT1491)	630-040	Rabbit	Rabbit IgG	100ug	ELISA, WB	Hu, Ms, Rt, Bv	\$ 245.00
LRRK2(pT1503)	630-060	Rabbit	Rabbit IgG	100ug	ELISA, WB	Hu, Ms, Rt, Bv	\$ 245.00
LSP	602-270	Rabbit	Rabbit IgG	100 ug	ELISA, WB, IP	Hu, Ms, Rt	\$ 199.00
LSP (Paired S190)	602-260	Rabbit	Rabbit IgG	100 ug	ELISA, WB, IP	Hu, Ms, Rt	\$ 220.00
LSP (pS190)	602-250	Rabbit	Rabbit IgG	100 ug	ELISA, WB, IP	Hu, Ms, Rt	\$ 245.00
Lysozyme	601-780	Rabbit	Rabbit IgG	100 ug	ELISA., WB	Hu	\$ 245.00
MAF	630-530	Rabbit	Rabbit IgG	100ug	ELISA, WB	Hu, Ms, Rt, Bv	\$ 245.00
Mammaglobin	602-500	Rabbit	Rabbit IgG	100 ug	ELISA, WB, IP	Hu	\$ 220.00
MARCH8	630-880	Rabbit	Rabbit IgG	100ug	ELISA, WB	Hu, Ms, Rt,	\$ 245.00
MBP	601-870	Rabbit	Rabbit IgG	100 ug	ELISA, IHC(P), WB	Hu, Ms, Rt	\$ 245.00
MBP (Paired T98)	601-880	Rabbit	Rabbit IgG	100 ug	ELISA, IHC(P), WB	Hu, Ms, Rt	\$ 245.00
MBP(pT98)	620-200	Rabbit	Rabbit IgG	100 ug	Wb, ELISA, IP	Hu, Ms, Rt	\$ 245.00
MCM5	602-400	Rabbit	Rabbit IgG	100 ug	ELISA, WB, IP	Hu	\$ 220.00
Mek1	500-7854	Rabbit	Rabbit IgG	100 ug	WB	Hu, Ms, Rt	\$ 245.00
MEK1/2 (paired S218/S222)	620-180	Rabbit	Rabbit IgG	100 ug	Wb, ELISA, IP	Hu, Ms, Rt	\$ 245.00
MEK1/2(pS218/S222)	620-190	Rabbit	Rabbit IgG	100 ug	Wb, ELISA, IP	Hu, Ms, Rt	\$ 245.00
Mek2	500-7864	Rabbit	Rabbit IgG	100 ug	WB	Hu, Ms, Rt	\$ 245.00
MEK5 (MAPKK5)	620-320	Rabbit	Rabbit IgG	100 ug	Wb, ELISA, IP	Hu, Ms, Rt	\$ 245.00
MEK5 (MAPKK5) (Paired S311/T315)	620-310	Rabbit	Rabbit IgG	100 ug	Wb, ELISA, IP	Hu, Ms, Rt	\$ 245.00
MEK5 (MAPKK5) (pS311/pT315)	620-300	Rabbit	Rabbit IgG	100 ug	Wb, ELISA, IP	Hu, Ms, Rt	\$ 245.00
Mek6	500-7874	Rabbit	Rabbit IgG	100 ug	WB, IP	Hu, Ms, Rt	\$ 245.00
Mekk-1	500-7884	Rabbit	Rabbit IgG	100 ug	WB	Hu, Ms, Rt	\$ 245.00
Meteorin(CT)	600-450	Rabbit	Rabbit IgG	100 ug	IHC, WB, ELISA	Hu, Ms, Rt	\$ 220.00
Meteorin(IN)	600-440	Rabbit	Rabbit IgG	100 ug	IHC, WB, ELISA	Hu, Ms, Rt	\$ 220.00
Meteorin(NT)	600-430	Rabbit	Rabbit IgG	100 ug	IHC, WB, ELISA	Hu, Ms, Rt	\$ 220.00

Description	Catalogue	Host	Isotyping	Size	Application	Cross Reactivity	Price
mGluR1	500-2894	Rabbit	Rabbit IgG	100 ug	IHC(P), WB, IP	Hu, Ms, Rt	\$ 245.00
mGluR5	500-2874	Rabbit	Rabbit IgG	100 ug	IHC(P), WB, IP	Hu, Rt, Rb	\$ 245.00
Midkine	600-110	Rabbit	Rabbit IgG	100 ug	WB, ELISA, IP	Hu	\$ 210.00
Midkine (Biotinylated)	600-111	Rabbit	Rabbit IgG	100 ug	WB, ELISA, IP	Hu	\$ 245.00
MIG 7	602-920	Rabbit	Rabbit IgG	100 ug	ELISA, WB, IHC	Hu	\$ 245.00
MKK3	500-12974	Rabbit	Rabbit IgG	100 ug	IHC-P, WB, ELISA	Hu, Rt	\$ 245.00
MKK6	500-13064	Rabbit	Rabbit IgG	100 ug	IHC-P, WB, ELISA	Hu, Rt	\$ 245.00
MLH1	630-830	Rabbit	Rabbit IgG	100ug	ELISA, WB	Hu, Ms, Rt,	\$ 245.00
MMP-1 (Collagenase-I)	500-7964	Rabbit	Rabbit IgG	100 ug	WB	Hu	\$ 245.00
MMP-2	500-3654	Rabbit	Rabbit IgG	100 ug	IHC(P), WB	Hu	\$ 245.00
MMP-3 (MMP-10)	500-12674	Rabbit	Rabbit IgG	100 ug	IHC-P	Hu	\$ 245.00
MMP-7 (Matrilysin)	602-830	Rabbit	Rabbit IgG	100 ug	ELISA, WB, IP	Hu	\$ 245.00
MMP-8	500-9884	Rabbit	Rabbit IgG	100 ug	WB	Hu	\$ 245.00
MMP-9	500-3664	Rabbit	Rabbit IgG	100 ug	IHC(P), WB	Hu	\$ 245.00
MMP-10	500-3674	Rabbit	Rabbit IgG	100 ug	IHC(P), WB	Hu	\$ 245.00
MMP-12	601-400	Rabbit	Rabbit IgG	100 ug	WB, ELISA	Hu	\$ 245.00
MMP-13	602-840	Rabbit	Rabbit IgG	100 ug	ELISA, WB, IP	Hu	\$ 245.00
MMP-14	500-3864	Rabbit	Rabbit IgG	100 ug	IHC(P), WB	Hu	\$ 245.00
MMP-15	500-4124	Rabbit	Rabbit IgG	100 ug	IHC(P), WB	Hu, Ms	\$ 245.00
MMP-16 / MT3-MMP	500-5224	Rabbit	Rabbit IgG	100 ug	IHC-P	Hu, Ms, Rt	\$ 245.00
MMP-17(MT4-MMP; MT-MMP-4)	601-410	Rabbit	Rabbit IgG	100 ug	WB	Hu, Ms, Rt	\$ 245.00
MMP-19	500-4034	Rabbit	Rabbit IgG	100 ug	IHC(P), WB	Hu	\$ 245.00
MMP-20	601-420	Rabbit	Rabbit IgG	100 ug	WB	Hu	\$ 245.00
MMP-21	601-430	Rabbit	Rabbit IgG	100 ug	WB	Hu	\$ 245.00
MMP-23	500-4044	Rabbit	Rabbit IgG	100 ug	IHC(P), WB	Hu	\$ 245.00
MMP-24/MT5-MMP	601-370	Rabbit	Rabbit IgG	100 ug	WB	Hu	\$ 245.00
MMP-26	601-380	Rabbit	Rabbit IgG	100 ug	WB	Hu	\$ 245.00
MMP-27	601-390	Rabbit	Rabbit IgG	100 ug	WB	Hu	\$ 245.00
MMP-28	600-690	Rabbit	Rabbit IgG	100 ug	WB	Hu	\$ 245.00
MSH2	630-840	Rabbit	Rabbit IgG	100ug	ELISA, WB	Hu, Ms, Rt,	\$ 245.00
MSH6	630-850	Rabbit	Rabbit IgG	100ug	ELISA, WB	Hu, Ms, Rt,	\$ 245.00
mTOR	600-400	Rabbit	Rabbit IgG	100 ug	WB, ELISA, IP	Hu, Ms, Rt	\$ 199.00

Description	Catalogue	Host	Isotyping	Size	Application	Cross Reactivity	Price
Myc(pT358)	500-11824	Rabbit	Rabbit IgG	100 ug	IHC, ELISA, IP	Hu, Ms	\$ 245.00
Myc(pT58)	500-11834	Rabbit	Rabbit IgG	100 ug	IHC, WB, ELISA, IP	Hu, Ms	\$ 245.00
Myc-Tag	610-010	Rabbit	Rabbit IgG	100 ug	WB, ELISA, IP		\$ 195.00
MyD88	500-7984	Rabbit	Rabbit IgG	100 ug	WB, ELISA, IP	Hu, Ms, Rt	\$ 225.00
Myelin Basic Protein	500-1944	Rabbit	Rabbit IgG	100 ug	IHC(P)	Hu	\$ 240.00
MyoD1	630-700	Rabbit	Rabbit IgG	100ug	ELISA, WB		\$ 245.00
Myoglobin	500-2994	Rabbit	Rabbit IgG	100 ug	IHC(P), WB	Hu	\$ 149.00
Nanog	620-510	Rabbit	Rabbit IgG	100ug	WB, IHC, IF	Hu	\$ 245.00
NAPRT	630-510	Rabbit	Rabbit IgG	100ug	ELISA, WB	Hu, Ms, Rt, Bv	\$ 245.00
NCK2	500-11044	Rabbit	Rabbit IgG	100 ug	IHC-P	Hu	\$ 245.00
NEFA/NUCB2	600-660	Rabbit	Rabbit IgG	100 ug	WB, ELISA	Ms, Rt	\$ 235.00
Neurofibromin	620-260	Rabbit	Rabbit IgG	100 ug	Wb, ELISA, IP	Hu	\$ 245.00
Neurofibromin(paired S2741)	620-250	Rabbit	Rabbit IgG	100 ug	Wb, ELISA, IP	Hu	\$ 245.00
Neurofibromin(pS2741)	620-240	Rabbit	Rabbit IgG	100 ug	Wb, ELISA, IP	Hu	\$ 245.00
Neuropilin-1 (CT)	620-350	Rabbit	Rabbit IgG	100 ug	Wb, ELISA, IP, IHC	Hu, Bv	\$ 245.00
Neuropilin-1 (Paired T916)	620-340	Rabbit	Rabbit IgG	100 ug	Wb, ELISA, IP, IHC	Hu, Bv	\$ 245.00
Neuropilin-1 (pT916)	620-330	Rabbit	Rabbit IgG	100 ug	Wb, ELISA, IP, IHC	Hu, Bv	\$ 245.00
Neuropilin-1(paired Y297)	630-580	Rabbit	Rabbit IgG	100ug	ELISA, WB	Hu, Ms, Rt,	\$ 245.00
Neuropilin-1(pY297)	630-570	Rabbit	Rabbit IgG	100ug	ELISA, WB	Hu, Ms, Rt,	\$ 245.00
Neuropilin-2	630-610	Rabbit	Rabbit IgG	100ug	ELISA, WB	Hu, Ms, Rt,	\$ 245.00
Neuropilin-2(PairedY39)	630-600	Rabbit	Rabbit IgG	100ug	ELISA, WB	Hu, Ms, Rt,	\$ 245.00
Neuropilin-2(pY39)	630-590	Rabbit	Rabbit IgG	100ug	ELISA, WB	Hu, Ms, Rt,	\$ 245.00
NFkB p50	500-3634	Rabbit	Rabbit IgG	100 ug	IHC(P)	Hu	\$ 245.00
NFkB p65	500-2754	Rabbit	Rabbit IgG	100 ug	IHC(P), WB	Hu, Rt, Rb	\$ 245.00
NFkBp65 (pS276)	500-9064	Rabbit	Rabbit IgG	100 ug	WB, IHC, ELISA, IP	Hu/Rt/Ms	\$ 245.00
NFkBp65(PairedS276)	620-640	Rabbit	Rabbit IgG	100ug	ELISA, WB, IHC	Hu, Ms, Rt	\$ 245.00
NFkBp65(PairedT254)	620-620	Rabbit	Rabbit IgG	100ug	ELISA, WB, IHC	Hu, Ms, Rt	\$ 245.00
NFkB-p100/p52(pS869)	500-11844	Rabbit	Rabbit IgG	100 ug	IHC, WB, ELISA	Hu, Ms	\$ 245.00
NFkB-p65(pS468)	500-11854	Rabbit	Rabbit IgG	100 ug	IHC, WB, ELISA	Hu, Ms	\$ 245.00
NFkB-p65(pT435)	500-11864	Rabbit	Rabbit IgG	100 ug	IHC, WB, ELISA	Hu, Ms	\$ 245.00
NF-κB p100/p52	500-11454	Rabbit	Rabbit IgG	100 ug	IHC, WB, ELISA, IP	Hu, Ms	\$ 245.00
NF-κB p100/p52(pS865)	500-11874	Rabbit	Rabbit IgG	100 ug	IHC, WB, ELISA, IP	Hu, Ms	\$ 245.00

Description	Catalogue	Host	Isotyping	Size	Application	Cross Reactivity	Price
NF-κB p105/p50	500-11464	Rabbit	Rabbit IgG	100 ug	IHC, WB, ELISA	Hu, Ms	\$ 245.00
NF-κB p105/p50(pS337)	500-11884	Rabbit	Rabbit IgG	100 ug	IHC, WB, ELISA	Hu, Ms	\$ 245.00
NF-κB p105/p50(pS893)	500-11894	Rabbit	Rabbit IgG	100 ug	IHC, ELISA	Hu, Ms	\$ 245.00
NF-κB p105/p50(pS907)	500-11904	Rabbit	Rabbit IgG	100 ug	IHC, WB, ELISA, IP	Hu, Ms	\$ 245.00
NF-κB p65(pS276)	500-11914	Rabbit	Rabbit IgG	100 ug	IHC, ELISA, WB, IP	Hu, Ms	\$ 245.00
NF-κB p65(pS536)	500-11924	Rabbit	Rabbit IgG	100 ug	IHC, ELISA, IP	Hu, Ms	\$ 245.00
NF-κB p65(pT254)	500-11934	Rabbit	Rabbit IgG	100 ug	IHC, WB, ELISA, IP	Hu, Ms	\$ 245.00
NKX3.1	602-420	Rabbit	Rabbit IgG	100 ug	ELISA, WB, IP	Hu	\$ 220.00
Notch 1	620-600	Rabbit	Rabbit IgG	100ug	ELISA, WB, IHC	Hu	\$ 245.00
Notch 2	620-610	Rabbit	Rabbit IgG	100ug	ELISA, WB, IHC	Hu,	\$ 245.00
NPPB	602-560	Rabbit	Rabbit IgG	100 ug	ELISA, WB, IP	Hu, Ms, Rt	\$ 245.00
Nucleophosmin (NPM)	630-560	Rabbit	Rabbit IgG	100ug	ELISA, WB	Hu, Ms, Rt, Bv	\$ 245.00
Nucleophosmin (NPM) (pS70)	630-540	Rabbit	Rabbit IgG	100ug	ELISA, WB	Hu, Ms, Rt, Bv	\$ 245.00
Nucleophosmin (NPM)Paired S70	630-550	Rabbit	Rabbit IgG	100ug	ELISA, WB	Hu, Ms, Rt, Bv	\$ 245.00
OCT-1	601-440	Rabbit	Rabbit IgG	100 ug	WB	Hu	\$ 245.00
OCT-2	500-4304	Rabbit	Rabbit IgG	100 ug	IHC(P), WB, IP	Hu, Ms, Rt	\$ 195.00
OCT-4	601-450	Rabbit	Rabbit IgG	100 ug	WB	Hu, Ms, Rt	\$ 245.00
Osteopontin	500-3284	Rabbit	Rabbit IgG	100 ug	IHC(P), WB	Hu, Pg, Dg	\$ 245.00
Osteopontin(SPP1)	600-600	Rabbit	Rabbit IgG	100 ug	WB, ELISA	Rt, Ms, Hu	\$ 245.00
Ovalbumin	601-750	Rabbit	Rabbit IgG	100 ug	ELISA., WB	Hu	\$ 245.00
Ovomucoid	601-770	Rabbit	Rabbit IgG	100 ug	ELISA., WB	Chick	\$ 245.00
Ovotransferrin	601-760	Rabbit	Rabbit IgG	100 ug	ELISA., WB	Hu	\$ 245.00
p130cas	500-13724	Rabbit	Rabbit IgG	100 ug	WB	Hu	\$ 245.00
p14ARF	500-4354	Rabbit	Rabbit IgG	100 ug	IHC(P), WB	Hu, Ms, Rt	\$ 245.00
p15INK4b	620-540	Rabbit	Rabbit IgG	100ug	ELISA, WB, IHC	Hu, Ms, Rt	\$ 245.00
p16INK4a (CT)	500-6314R	Rabbit	Rabbit IgG	100 ug	WB, IP, IHC-P	Hu,	\$ 245.00
P170/p-Glycoprotein	500-13734	Rabbit	Rabbit IgG	100 ug	WB	Hu	\$ 245.00
p18/INK4C	500-13744	Rabbit	Rabbit IgG	100 ug	WB	Hu, Ms, Rt	\$ 245.00
p19/INK4d	500-8054	Rabbit	Rabbit IgG	100 ug	WB, IP	Hu,Ms, Rt	\$ 245.00
p27/Kip	500-2604	Rabbit	Rabbit IgG	100 ug	IHC(P), WB, IP	Hu, Ms, Rt	\$ 245.00
P38	500-10004	Rabbit	Rabbit IgG	100 ug	WB, IHC	Hu, Ms, Rt	\$ 245.00
p53	500-2014	Rabbit	Rabbit IgG	100 ug	IHC(P), WB	Hu, Ms, Rt	\$ 199.00



Description	Catalogue	Host	Isotyping	Size	Application	Cross Reactivity	Price
P53(pS15)	600-550	Rabbit	Rabbit IgG	100 ug	WB, ELISA	Hu, Ms, Rt	\$ 220.00
P53(pS37)	601-260	Rabbit	Rabbit IgG	100 ug	ELISA, IHC(P), WB	Hu/Rt/Ms	\$ 245.00
p56-LCK (LSK)	602-360	Rabbit	Rabbit IgG	100 ug	ELISA, WB, IP	Hu, Ms, Rt	\$ 199.00
p56-LCK (LSK) (Paired Y505)	602-350	Rabbit	Rabbit IgG	100 ug	ELISA, WB, IP	Hu, Ms, Rt	\$ 220.00
p56-LCK (LSK) (pY505)	602-340	Rabbit	Rabbit IgG	100 ug	ELISA, WB, IP	Hu, Ms, Rt, Ck, Bv, Canis	\$ 245.00
p63	500-4574	Rabbit	Rabbit IgG	100 ug	IHC(P), WB	Hu	\$ 245.00
p70S6K	601-310	Rabbit	Rabbit IgG	100 ug	ELISA, WB	Hu, Rt, Ms	\$ 215.00
p73	500-8074	Rabbit	Rabbit IgG	100 ug	WB	Hu	\$ 245.00
PAK4	600-040	Rabbit	Rabbit IgG	100 ug	WB, IP, ELISA	Hu, Ms, Rt	\$ 245.00
PAK4(pS474)	600-030	Rabbit	Rabbit IgG	100 ug	WB, IP, ELISA	Hu, Ms, Rt	\$ 245.00
Parathyroid Hormone (PTH)	500-2784	Rabbit	Rabbit IgG	100 ug	IHC(P)	Hu	\$ 245.00
Parkin	630-440	Rabbit	Rabbit IgG	100 ug	ELISA, WB, IP	Hu, Ms, Rt	\$ 245.00
Parkin (Paired S56)	630-430	Rabbit	Rabbit IgG	100ug	ELISA, WB	Hu, Ms, Rt, Bv	\$ 245.00
Parkin (pS56)	630-420	Rabbit	Rabbit IgG	100ug	ELISA, WB	Hu, Ms, Rt, Bv	\$ 245.00
PAX8	620-590	Rabbit	Rabbit IgG	100ug	ELISA, WB, IHC	Hu, Ms, Rt	\$ 245.00
Paxillin	602-370	Rabbit	Rabbit IgG	100 ug	ELISA, WB, IP, IHC	Hu, Ms, Rt	\$ 220.00
PCNA	500-2854	Rabbit	Rabbit IgG	100 ug	IHC(P), WB	Hu	\$ 245.00
PCSK9	601-650	Rabbit	Rabbit IgG	100 ug	Elisa, WB, IHC	Hu, Rt, Ms	\$ 245.00
PD-1	630-870	Rabbit	Rabbit IgG	100ug	ELISA, WB	Hu, Ms, Rt,	\$ 245.00
PDGF	500-3894	Rabbit	Rabbit IgG	100 ug	IHC(P), WB, IF	Hu, Rt, Ms	\$ 245.00
PDGFR-alpha	500-2694	Rabbit	Rabbit IgG	100 ug	IHC(P)	Hu, Rt	\$ 245.00
Pdia 4	600-810	Rabbit	Rabbit IgG	100 ug	WB, ELISA	Hu, Ms, Rt, Bv, Dg	\$ 245.00
PDX-1	601-590	Rabbit	Rabbit IgG	100 ug	WB	Hu	\$ 245.00
Phosphoserine (pSer)	620-680	Rabbit	Rabbit IgG	100ug	ELISA, WB	all species	\$ 245.00
Phosphothreonine(pThr)	620-670	Rabbit	Rabbit IgG	100ug	ELISA, WB	all species	\$ 245.00
Phosphotyrosine (pTyr)	620-690	Rabbit	Rabbit IgG	100ug	ELISA, WB	all species	\$ 245.00
PID/MTA2	500-10034	Rabbit	Rabbit IgG	100 ug	WB	Hu, Ms, Rt	\$ 245.00
PINK1	630-470	Rabbit	Rabbit IgG	100ug	ELISA, WB	Hu, Ms, Rt, Bv	\$ 245.00
PINK1 (pT257)	630-450	Rabbit	Rabbit IgG	100ug	ELISA, WB	Hu, Ms, Rt, Bv	\$ 245.00
PINK1(Paired T257)	630-460	Rabbit	Rabbit IgG	100ug	ELISA, WB	Hu, Ms, Rt, Bv	\$ 245.00
PKC	500-9234	Rabbit	Rabbit IgG	100 ug	WB, IP	Hu, Ms, Rt	\$ 245.00
PKC (pS345)	500-9244	Rabbit	Rabbit IgG	100 ug	WB, IP	Hu, Ms, Rt	\$ 245.00

Description	Catalogue	Host	Isotyping	Size	Application	Cross Reactivity	Price
PKC epsilon	500-3584	Rabbit	Rabbit IgG	100 ug	IHC(P), WB, IP	Hu, Ms, Rt	\$ 245.00
PKN	500-13764	Rabbit	Rabbit IgG	100 ug	WB	Hu, Ms, Rt	\$ 245.00
PLAC1	602-980	Rabbit	Rabbit IgG	100ug	ELISA, WB, IHC	Hu, Ms, Rt	\$ 245.00
PLAC1 (Paired S121)	620-440	Rabbit	Rabbit IgG	100ug	ELISA, WB, IHC	Hu	\$ 245.00
PLAC1 (Phosphospecific)	602-990	Rabbit	Rabbit IgG	100ug	ELISA, WB, IHC	Hu, Ms, Rt	\$ 245.00
PLAC1(Hu)	620-390	Rabbit	Rabbit IgG	100ug	ELISA, WB, IHC	Hu	\$ 245.00
PLAC1(Paired Y147)	620-410	Rabbit	Rabbit IgG	100ug	ELISA, WB, IHC	Hu	\$ 245.00
PLAC1(PairedS156)	620-430	Rabbit	Rabbit IgG	100ug	ELISA, WB, IHC	Hu	\$ 245.00
PLAC1(pS156)	620-420	Rabbit	Rabbit IgG	100ug	ELISA, WB, IHC	Hu	\$ 245.00
PLAC1(pY147)	620-400	Rabbit	Rabbit IgG	100ug	ELISA, WB, IHC	Hu,	\$ 245.00
PLAP	500-2044	Rabbit	Rabbit IgG	100 ug	IHC(P)	Hu	\$ 199.00
PLC gamma 1	500-8164	Rabbit	Rabbit IgG	100 ug	WB, IP	Hu, Rt, Cw	\$ 245.00
PLC gamma2	500-12474	Rabbit	Rabbit IgG	100 ug	IHC-P, WB	Hu, Ms, Rt	\$ 245.00
Plectin	600-770	Rabbit	Rabbit IgG	100 ug	WB, ELISA	Hu, Ms, Rt	\$ 235.00
PMS2	630-860	Rabbit	Rabbit IgG	100ug	ELISA, WB	Hu, Ms, Rt,	\$ 245.00
PPARa	600-150	Rabbit	Rabbit IgG	100 ug	WB, ELISA, IP	Hu	\$ 195.00
PPARb	600-160	Rabbit	Rabbit IgG	100 ug	WB, ELISA, IP	Hu	\$ 195.00
PPARd	600-180	Rabbit	Rabbit IgG	100 ug	WB, ELISA, IP	Hu	\$ 195.00
PPARg	600-170	Rabbit	Rabbit IgG	100 ug	WB, ELISA, IP	Hu	\$ 195.00
Presenillin	500-3484	Rabbit	Rabbit IgG	100 ug	IHC(P)	Hu	\$ 245.00
Progesterone Receptor (PR)	500-2074	Rabbit	Rabbit IgG	100 ug	IHC(P), WB	Hu, Ms, Rt, Bv	\$ 245.00
PSA	600-700	Rabbit	Rabbit IgG	100 ug	WB, ELISA	Hu	\$ 195.00
PSA/Kallikrein 3(NT)	600-860	Rabbit	Rabbit IgG	100 ug	WB, ELISA	Hu	\$ 245.00
PSA/Kallikrein3 (IN)	600-960	Rabbit	Rabbit IgG	100 ug	WB, ELISA	Hu	\$ 245.00
pTEN	601-850	Rabbit	Rabbit IgG	100 ug	ELISA, IHC(P), WB	Hu	\$ 225.00
pTEN (Paired S380)	602-150	Rabbit	Rabbit IgG	100 ug	ELISA, WB, IP	Hu, Ms, Rt	\$ 220.00
pTEN(pS380)	601-170	Rabbit	Rabbit IgG	100 ug	WB, ELISA	Hu, Ms, Rt	\$ 245.00
Raf -A	500-7074	Rabbit	Rabbit IgG	100 ug	WB	Hu, Ms, Rt	\$ 245.00
Raf-1	500-8214	Rabbit	Rabbit IgG	100 ug	WB, IP	Hu, Ms, Rt	\$ 245.00
Raf-1 (pS259)	500-12014	Rabbit	Rabbit IgG	100 ug	IHC, ELISA	Hu, Ms	\$ 240.00
Raf-A (pS186)	630-390	Rabbit	Rabbit IgG	100ug	ELISA, WB	Hu, Ms, Rt, Bv	\$ 245.00
RaIA (Paired S196)	620-780	Rabbit	Rabbit IgG	100ug	ELISA, WB, IHC	hu, Ms, Rt	\$ 245.00

Description	Catalogue	Host	Isotyping	Size	Application	Cross Reactivity	Price
RaIA (pS196)	620-770	Rabbit	Rabbit IgG	100ug	ELISA, WB, IHC	hu, Ms, Rt	\$ 245.00
Ras18	500-8234	Rabbit	Rabbit IgG	100 ug	WB	Hu	\$ 245.00
RCAS1	602-610	Rabbit	Rabbit IgG	100 ug	ELISA, WB, IP	Hu, Ms, Rt	\$ 245.00
Rel (pS503)	500-12024	Rabbit	Rabbit IgG	100 ug	IHC, ELISA	Hu, Ms	\$ 245.00
RESP18	630-310	Rabbit	Rabbit IgG	100ug	WB, IP	Ms, Rt,	\$ 245.00
Retinoblastoma (RB)	500-4314	Rabbit	Rabbit IgG	100 ug	IHC(P), WB	Hu, Ms, Rt	\$ 245.00
Rho	500-10054	Rabbit	Rabbit IgG	100 ug	WB	Hu, Ms, Rt	\$ 245.00
Rho Kinase/ROCKII (IN)	602-860	Rabbit	Rabbit IgG	100 ug	ELISA, WB, IP	Hu, Ms, Rt, Ck, Bv, Canis	\$ 245.00
Rho Kinase/ROCKII (Paired T249)	602-880	Rabbit	Rabbit IgG	100 ug	ELISA, WB, IP	Hu, Ms, Rt, Ck, Bv, Canis	\$ 245.00
Rho Kinase/ROCKII (Paired T396)	602-850	Rabbit	Rabbit IgG	100 ug	ELISA, WB, IP	Hu, Ms, Rt, Ck, Bv, Canis	\$ 245.00
Rho Kinase/ROCKII (pT249)	602-870	Rabbit	Rabbit IgG	100 ug	ELISA, WB, IP	Hu, Ms, Rt, Ck, Bv, Canis	\$ 245.00
Rho Kinase/ROCKII (pT396)	500-9284	Rabbit	Rabbit IgG	100 ug	WB	Hu, Ms, Rt, Ck, Bv, Canis	\$ 245.00
Rho(pS188)	602-580	Rabbit	Rabbit IgG	100 ug	ELISA, WB, IP, IHC	Hu, Rt, Ms, Ck, canis,	\$ 245.00
RhoGDI	620-560	Rabbit	Rabbit IgG	100ug	ELISA, WB, IHC	Hu, Ms, Rt	\$ 245.00
RhoGDI (pY156)	620-550	Rabbit	Rabbit IgG	100ug	ELISA, WB, IHC	Hu, Ms, Rt	\$ 245.00
RIC8	620-570	Rabbit	Rabbit IgG	100ug	ELISA, WB, IHC	Hu, Ms, Rt	\$ 245.00
S100	500-2144	Rabbit	Rabbit IgG	100 ug	IHC(P)	Hu, Ms, Rt, Bv	\$ 199.00
S6K(pS434)	601-030	Rabbit	Rabbit IgG	100 ug	WB	Hu, Ms, Rt	\$ 215.00
SAND1 (Mona)	630-140	Rabbit	Rabbit IgG	100ug	ELISA, WB	Hu, Ms,	\$ 245.00
SAND2 (Mon1b)	630-150	Rabbit	Rabbit IgG	100ug	ELISA, WB	Hu, Ms,	\$ 245.00
SAPOSIN(PSAP)	600-470	Rabbit	Rabbit IgG	100 ug	WB, ELISA	Hu	\$ 220.00
SARS-CoV2(N1)	630-940	Rabbit	Rabbit IgG	100ug	ELISA, WB, FC	Hu, Ms, Rt,	\$ 245.00
SARS-CoV2(N2)	630-950	Rabbit	Rabbit IgG	100ug	ELISA, WB, FC	Hu, Ms, Rt,	\$ 245.00
SARS-CoV2(S1)	630-920	Rabbit	Rabbit IgG	100ug	ELISA, WB, FC	Hu, Ms, Rt,	\$ 245.00
SARS-CoV2(S2)	630-930	Rabbit	Rabbit IgG	100ug	ELISA, WB, FC	Hu, Ms, Rt,	\$ 245.00
SCG2 (Secretogranin II)	630-330	Rabbit	Rabbit IgG	100ug	WB, IP	Ms, Rt,	\$ 245.00
Selectin E (IN)	600-850	Rabbit	Rabbit IgG	100 ug	WB, ELISA	Hu, Ms, Rt	\$ 225.00
Selectin E (N term)	600-840	Rabbit	Rabbit IgG	100 ug	WB, ELISA	Hu, , Rt;, Ms	\$ 220.00
SERPINC1/AT3(Antithrombin 3)	630-130	Rabbit	Rabbit IgG	100ug	ELISA, WB	Hu, Ms,	\$ 245.00
SH3BP5	630-490	Rabbit	Rabbit IgG	100ug	ELISA, WB	Hu, Ms, Rt, Bv	\$ 245.00
Shaker	602-890	Rabbit	Rabbit IgG	100 ug	ELISA, WB, IP	Hu, Dros	\$ 245.00
Shaker (Biotinylated)	602-89B	Rabbit	Rabbit IgG	100 ug	ELISA, WB, IP	Hu, Dros	\$ 245.00

Description	Catalogue	Host	Isotyping	Size	Application	Cross Reactivity	Price
Sialyltransferase	602-900	Rabbit	Rabbit IgG	100 ug	ELISA, WB, IP	Hu, Dros	\$ 245.00
Sialyltransferase (Biotinylated)	602-90B	Rabbit	Rabbit IgG	100 ug	ELISA, WB, IP	Hu, Dros	\$ 245.00
SirT1	630-650	Rabbit	Rabbit IgG	100ug	ELISA, WB	Hu, Ms, Rt,	\$ 245.00
SirT1(pS47)	630-660	Rabbit	Rabbit IgG	100ug	ELISA, WB	Hu, Ms, Rt,	\$ 245.00
SirT2	630-670	Rabbit	Rabbit IgG	100ug	ELISA, WB	Hu, Ms, Rt,	\$ 245.00
SirT3	630-680	Rabbit	Rabbit IgG	100ug	ELISA, WB	Hu, Ms, Rt,	\$ 245.00
SLC10a4	600-070	Rabbit	Rabbit IgG	100 ug	Elisa, WB	Ms/Rt	\$ 245.00
SMN (Survival of motor neuron)	601-720	Rabbit	Rabbit IgG	100 ug	ELISA., WB	Hu	\$ 245.00
SNAI-1	630-710	Rabbit	Rabbit IgG	100ug	ELISA, WB	Hu, Ms, Rt,	\$ 245.00
SNAI-2	630-720	Rabbit	Rabbit IgG	100ug	ELISA, WB	Hu, Ms, Rt,	\$ 245.00
SNAI-3	630-730	Rabbit	Rabbit IgG	100ug	ELISA, WB	Hu, Ms, Rt,	\$ 245.00
SNAIL-1, 2, 3	630-740	Rabbit	Rabbit IgG	100ug	ELISA, WB	Hu, Ms, Rt,	\$ 245.00
SOCS1	600-520	Rabbit	Rabbit IgG	100 ug	WB, ELISA	Hu, Ms, Rt	\$ 199.00
SOCS2	600-530	Rabbit	Rabbit IgG	100 ug	WB, ELISA	Hu, Ms, Rt	\$ 199.00
SOCS3	600-540	Rabbit	Rabbit IgG	100 ug	WB, ELISA	Hu, Ms, Rt	\$ 199.00
SOCS-4	500-10164	Rabbit	Rabbit IgG	100 ug	WB	Hu	\$ 215.00
SOCS-5	500-10174	Rabbit	Rabbit IgG	100 ug	WB	Hu, Ms	\$ 219.00
Somatostatin	500-2164	Rabbit	Rabbit IgG	100 ug	IHC(P)	Hu	\$ 245.00
Somatostatin Receptor 1	500-4094	Rabbit	Rabbit IgG	100 ug	IHC(P)	Hu, Ms, Rt	\$ 245.00
SOX-1	601-480	Rabbit	Rabbit IgG	100 ug	WB	Hu, Ms	\$ 245.00
SOX-2	601-490	Rabbit	Rabbit IgG	100 ug	WB	Hu, Ms, Rt, Ck, Bv, Canis	\$ 245.00
SOX-3	601-500	Rabbit	Rabbit IgG	100 ug	WB	Hu	\$ 245.00
SOX-4	601-510	Rabbit	Rabbit IgG	100 ug	WB	Hu	\$ 245.00
SOX-6	601-520	Rabbit	Rabbit IgG	100 ug	WB, IHC(P)	Hu, Rt, Ms	\$ 245.00
SOX-9	620-290	Rabbit	Rabbit IgG	100 ug	Wb, ELISA, IP	Hu, Ms, Rt	\$ 245.00
SOX-9 (paired S181)	620-280	Rabbit	Rabbit IgG	100 ug	Wb, ELISA, IP	Hu, Ms, Rt	\$ 245.00
SOX-9 (pS181)	620-270	Rabbit	Rabbit IgG	100 ug	Wb, ELISA, IP	Hu, Ms, Rt	\$ 245.00
SOX-14	601-540	Rabbit	Rabbit IgG	100 ug	WB	Hu, Rt, Ms	\$ 245.00
SOX-17	601-550	Rabbit	Rabbit IgG	100 ug	WB	Hu	\$ 245.00
SPHK1	600-120	Rabbit	Rabbit IgG	100 ug	WB, ELISA,	Hu	\$ 199.00
SPHK2	601-660	Rabbit	Rabbit IgG	100 ug	WB, ELISA,	Hu	\$ 199.00
SSEA1(CD15)	620-470	Rabbit	Rabbit IgG	100ug	ELISA, WB, IHC	Hu	\$ 245.00

Description	Catalogue	Host	Isotyping	Size	Application	Cross Reactivity	Price
SSEA2	620-480	Rabbit	Rabbit IgG	100ug	ELISA, WB, IHC	Hu	\$ 245.00
SSEA3	620-490	Rabbit	Rabbit IgG	100ug	ELISA, WB, IHC	Hu	\$ 245.00
SSEA4	620-500	Rabbit	Rabbit IgG	100ug	ELISA, WB, IHC	Hu	\$ 245.00
STAP1	630-820	Rabbit	Rabbit IgG	100ug	ELISA, WB	Hu, Ms, Rt,	\$ 245.00
STAT1	500-9314	Rabbit	Rabbit IgG	100 ug	WB, IP	Hu, Ms, Rt	\$ 235.00
STAT1 (Paired Y701)	620-170	Rabbit	Rabbit IgG	100 ug	WB, IP	Hu, Ms, Rt	\$ 235.00
STAT1 (pY701)	620-160	Rabbit	Rabbit IgG	100 ug	WB, IP	Hu, Ms, Rt	\$ 245.00
STAT2	500-12374	Rabbit	Rabbit IgG	100 ug	IHC-P, WB	Hu	\$ 245.00
STAT3	500-3694	Rabbit	Rabbit IgG	100 ug	IHC(P), WB, IP	Hu, Ms, Rt	\$ 220.00
STAT3 (pS727)	500-12044	Rabbit	Rabbit IgG	100 ug	IHC, WB, ELISA, IP	Hu, Ms, Rt	\$ 240.00
STAT3 (pY705)	500-12054	Rabbit	Rabbit IgG	100 ug	IHC, ELISA, IP	Hu, Ms	\$ 245.00
STAT4	500-12194	Rabbit	Rabbit IgG	100 ug	IHC, WB, ELISA, IP	Hu, Ms	\$ 225.00
STAT4(pY693)	500-12064	Rabbit	Rabbit IgG	100 ug	IHC, ELISA, IP	Hu, Ms	\$ 245.00
STAT5	500-8364	Rabbit	Rabbit IgG	100 ug	WB	Hu	\$ 225.00
STAT5 (Paired Y694)	602-140	Rabbit	Rabbit IgG	100 ug	ELISA, WB, IP	Hu, Ms, Rt	\$ 220.00
STAT5 (pY694)	500-9334	Rabbit	Rabbit IgG	100 ug	WB, IP	Hu, Ms, Rt	\$ 245.00
STAT5a	500-3594	Rabbit	Rabbit IgG	100 ug	IHC(P), WB, GS	Hu, Ms, Rt	\$ 215.00
STAT5A (pS780)	500-12074	Rabbit	Rabbit IgG	100 ug	IHC, WB, ELISA, IP	Hu, Ms	\$ 245.00
STAT5A (pY694)	500-12084	Rabbit	Rabbit IgG	100 ug	IHC, WB, ELISA	Hu, Ms	\$ 225.00
STAT5b	500-8374	Rabbit	Rabbit IgG	100 ug	WB, GSA	Hu, Ms, Rt	\$ 219.00
STAT6	500-4294	Rabbit	Rabbit IgG	100 ug	IHC(P), WB, IP	Hu, Ms, Rt	\$ 215.00
STAT6 (pT645)	500-12094	Rabbit	Rabbit IgG	100 ug	IHC, ELISA, IP	Hu, Ms	\$ 245.00
STAT6 (pY641)	500-12104	Rabbit	Rabbit IgG	100 ug	IHC, ELISA, IP	Hu, Ms	\$ 245.00
STK17b	630-360	Rabbit	Rabbit IgG	100 ug	ELISA, WB, IP	Hu, Ms, Rt	\$ 245.00
STK17b(pS11)	630-350	Rabbit	Rabbit IgG	100 ug	ELISA, WB, IP	Hu, Ms, Rt	\$ 245.00
SUMO-1/Sentrin-1	500-10994	Rabbit	Rabbit IgG	100 ug	WB	Hu	\$ 245.00
SUMO-2/Sentrin-2	500-10504	Rabbit	Rabbit IgG	100 ug	WB	Hu	\$ 245.00
SUMO-3/Sentrin-3	500-10514	Rabbit	Rabbit IgG	100 ug	WB	Hu	\$ 245.00
Synaptophysin	500-2174	Rabbit	Rabbit IgG	100 ug	IHC(P), WB	Hu	\$ 199.00
Synuclein alpha	500-2684	Rabbit	Rabbit IgG	100 ug	IHC(P)	Hu, Rt	\$ 245.00
Synuclein Alpha (pS129)	630-240	Rabbit	Rabbit IgG	100ug	ELISA, WB, IHC	Hu, Rt, Ms	\$ 245.00
Synuclein beta	500-2774	Rabbit	Rabbit IgG	100 ug	IHC(P)	Hu, Rt	\$ 245.00

Description	Catalogue	Host	Isotyping	Size	Application	Cross Reactivity	Price
TAF2	600-460	Rabbit	Rabbit IgG	100 ug	IHC, WB, ELISA	Hu, Ms, Rt	\$ 220.00
Tau	620-790	Rabbit	Rabbit IgG	100ug	ELISA, WB, IHC	hu, Ms, Rt	\$ 245.00
Tau (Paired 199)	620-710	Rabbit	Rabbit IgG	100ug	ELISA, WB, IHC	Hu, Ms, Rt	\$ 245.00
Tau (Paired 202)	620-700	Rabbit	Rabbit IgG	100ug	ELISA, WB, IHC	Hu, Ms, Rt	\$ 245.00
Tau (paired S384)	620-740	Rabbit	Rabbit IgG	100ug	ELISA, WB, IHC	Hu, Ms, Rt	\$ 245.00
Tau (pS199)	620-660	Rabbit	Rabbit IgG	100ug	ELISA, WB, IHC	Hu, Ms, Rt	\$ 245.00
Tau (pS202)	620-650	Rabbit	Rabbit IgG	100ug	ELISA, WB, IHC	Hu, Ms, Rt	\$ 245.00
Tau(pS384)	620-730	Rabbit	Rabbit IgG	100ug	ELISA, WB, IHC	Hu, Ms, Rt	\$ 245.00
Telomerase	500-11034	Rabbit	Rabbit IgG	100 ug	IHC-P	Hu	\$ 245.00
Tenascin C	600-780	Rabbit	Rabbit IgG	100 ug	WB, ELISA	Ms, Rt, Hu	\$ 240.00
TGF beta	500-3944	Rabbit	Rabbit IgG	100 ug	IHC(P), WB, IP	Hu, Ms, Rt	\$ 245.00
TGF beta 1	500-11264	Rabbit	Rabbit IgG	100 ug	IHC-P	Hu	\$ 245.00
TGF beta R1	500-12344	Rabbit	Rabbit IgG	100ug	ELISA, WB, IHC	hu, Ms, Rt,	\$ 245.00
TGF beta Receptor II	500-11244	Rabbit	Rabbit IgG	100 ug	IHC-P	Hu	\$ 245.00
TGF beta Receptor III	500-11234	Rabbit	Rabbit IgG	100 ug	IHC-P	Hu	\$ 245.00
TGF-alpha	500-3734	Rabbit	Rabbit IgG	100 ug	IHC(P)	Hu	\$ 245.00
TGF-beta 2	500-3784	Rabbit	Rabbit IgG	100 ug	IHC(P), WB, IP	Hu, Ms, Rt	\$ 245.00
TGFBR1(Nonphospho)	630-290	Rabbit	Rabbit IgG	100ug	ELISA, WB, IHC	hu, Ms, Rt,	\$ 245.00
TGFBR1(Phospho)	620-900	Rabbit	Rabbit IgG	100ug	ELISA, WB, IHC	hu, Ms, Rt,	\$ 245.00
TGFBR1(pS165)	620-910	Rabbit	Rabbit IgG	100ug	ELISA, WB, IHC	hu, Ms, Rt,	\$ 245.00
TIMP-4	630-190	Rabbit	Rabbit IgG	100ug	ELISA, WB, IHC	Hu, Rt, Ms, Bv	\$ 245.00
TK1 (Thymidine Kinase)	601-690	Rabbit	Rabbit IgG	100 ug	Elisa, WB, IHC	Drosph	\$ 245.00
TOR2A	630-300	Rabbit	Rabbit IgG	100ug	WB, IP	Hu, Ms, Rt,	\$ 245.00
Tpd52 (Tumor Protein D52)	600-610	Rabbit	Rabbit IgG	100 ug	WB, ELISA	Ms, Rt, Hu, Ck, Bv	\$ 230.00
Troponin I	600-680	Rabbit	Rabbit IgG	100 ug	WB, ELISA	Hu, Ms, Rt	\$ 220.00
Troponin T	601-820	Rabbit	Rabbit IgG	100 ug	ELISA, IHC(P), WB	Hu, Ms, Rt	\$ 245.00
TTK	620-890	Rabbit	Rabbit IgG	100ug	ELISA, WB, IHC	Hu	\$ 245.00
Tubulin alpha	500-4134	Rabbit	Rabbit IgG	100 ug	IHC(P), WB, IP	Hu, Ms, Rt	\$ 245.00
Tubulin beta	500-3814	Rabbit	Rabbit IgG	100 ug	IHC(P), WB, IP	Hu, Ms, Rt	\$ 245.00
Tubulin gamma	500-10334	Rabbit	Rabbit IgG	100 ug	IHC-P, WB	Hu, Ms, Rt	\$ 245.00
TWIST1/2	630-770	Rabbit	Rabbit IgG	100ug	ELISA, WB	Hu, Ms, Rt,	\$ 245.00
TWIST2	630-780	Rabbit	Rabbit IgG	100ug	ELISA, WB	Hu, Ms, Rt,	\$ 245.00

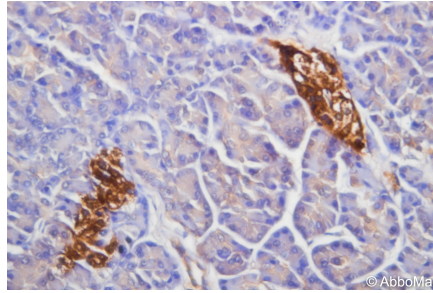


Description	Catalogue	Host	Isotyping	Size	Application	Cross Reactivity	Price
Ubiquitin	500-3354	Rabbit	Rabbit IgG	100 ug	IHC(P)	Hu	\$ 185.00
uNOS	500-3934	Rabbit	Rabbit IgG	100 ug	IHC(P), WB	Hu, Ms, Rt	\$ 199.00
V1bR (pY338)	620-530	Rabbit	Rabbit IgG	100ug	ELISA, WB, IHC	Hu	\$ 245.00
VASA	601-360	Rabbit	Rabbit IgG	100 ug	ELISA, WB, IHC	Hu	\$ 245.00
VASA (Paired 43)	601-350	Rabbit	Rabbit IgG	100 ug	ELISA, WB, IHC	Hu	\$ 245.00
VASA (pS43)	601-340	Rabbit	Rabbit IgG	100 ug	ELISA, WB, IHC	Hu	\$ 245.00
Vasopressin V1b Receptor	500-10214	Rabbit	Rabbit IgG	100 ug	WB	Hu	\$ 245.00
VEGFR-2 (CD309)	602-100	Rabbit	Rabbit IgG	100 ug	ELISA, WB, IP	Hu, Ms, Rt	\$ 199.00
VEGFR-2 (pY951) (CD309)	602-080	Rabbit	Rabbit IgG	100 ug	ELISA, WB, IP	Hu, Ms, Rt	\$ 245.00
VEGFR-2(Paired Y951) (CD309)	602-090	Rabbit	Rabbit IgG	100 ug	ELISA, WB, IP	Hu, Ms, Rt	\$ 220.00
Villin 2/ezrin/p80	600-790	Rabbit	Rabbit IgG	100 ug	WB, ELISA, IHC	Hu, Ms, Rt	\$ 245.00
VIR	620-520	Rabbit	Rabbit IgG	100ug	ELISA, WB, IHC	Hu	\$ 245.00
WDR19	602-550	Rabbit	Rabbit IgG	100 ug	ELISA, WB, IP	Hu, Ms, Rt	\$ 245.00
ZBTB4-CT	620-810	Rabbit	Rabbit IgG	100ug	ELISA, WB, IHC	hu, Ms, Rt, Bv	\$ 245.00
ZBTB4-NT	620-800	Rabbit	Rabbit IgG	100ug	ELISA, WB, IHC	Hu, Ms, Rt, Bv	\$ 245.00
ZEB1 (46aa-70aa)	630-750	Rabbit	Rabbit IgG	100ug	ELISA, WB	Hu, Ms, Rt,	\$ 245.00
ZO-1	630-010	Rabbit	Rabbit IgG	100ug	ELISA, WB	hu, Ms, Rt,	\$ 245.00
ZO-2	630-020	Rabbit	Rabbit IgG	100ug	ELISA, WB	hu, Ms, Rt,	\$ 245.00
ZO-3	630-030	Rabbit	Rabbit IgG	100ug	ELISA, WB	hu, Ms, Rt,	\$ 245.00

## Immunohistochemistry (IHC)

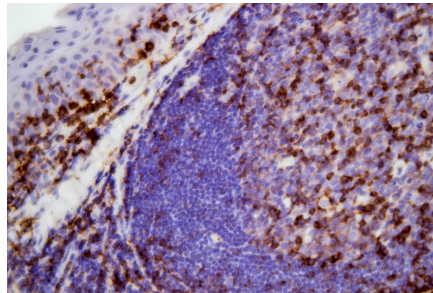
### Mouse anti PAX-6 Monoclonal Antibody (#604-230)

Clone: 1A6D8  
 Isotype: Mouse IgG1  
 Immunogen: Human PAX-6  
 Specificity: PAX-6 Antigen  
 Localization: Cytoplasm/Nucleus  
 Positive Ctrl: Pancreas  
 Dilution: 1:500



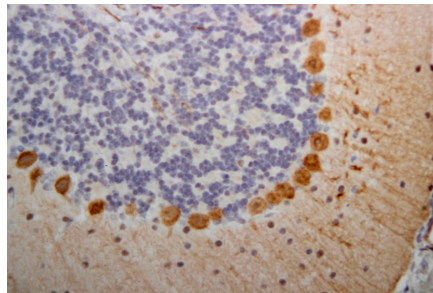
### Mouse anti CD43 Monoclonal Antibody (#603-990)

Clone:  
 Isotype: Mouse IgG1  
 Immunogen: Human CD43  
 Specificity: CD43 Antigen  
 Localization: Membrane  
 Positive Ctrl: Tonsil  
 Dilution: 1:500



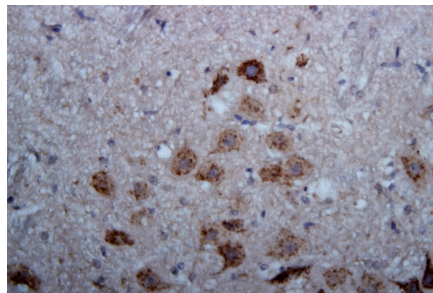
### Rabbit anti PINK(pT257) Antibody (#603-450)

Clone: N/A  
 Isotype: Rabbit IgG  
 Immunogen: Human PINK  
 Specificity: Phospho-PINK  
 Localization: Cytoplasm  
 Positive Ctrl: Brain  
 Dilution: 1:500



### Rabbit anti PARKIN (pS65) Antibody (#603-420)

Clone: N/A  
 Isotype: Rabbit IgG  
 Immunogen: Human PARKIN  
 Specificity: Phospho-PARKIN  
 Localization: Cytoplasm/Nucleus  
 Positive Ctrl: Brain  
 Dilution: 1:800



## Phosphospecific Antibodies - Catalog

Cellular decisions rely on intracellular signaling mechanisms that are dependent on the coordinated interaction of many proteins. It is well understood that phosphorylation via kinases plays a crucial role in signaling for many cellular events. Methodologies to investigate cellular signaling mechanisms have routinely relied on preparation of cellular lysates for in vitro biochemical analysis. The generation of phosphorylated state-specific antibodies that distinguish a phosphorylated from a non-phosphorylated form of a protein have greatly expanded the assessment of signaling. This has been standardly employed in immunoblot analysis, immunoprecipitation or fluorescent microscopy. AbboMax provides variety of cell lysates as well as the phosphospecific antibodies to expedite your research.



Description	Catalogue	Host	Isotyping	Size	Application	Cross Reactivity	Price
<b>AEG1(pS568)</b>	630-080	Rabbit	Rabbit IgG	100µg	ELISA, WB	Hu, Ms, Rt	\$345.00
<b>ALK/p80(pY1282/12)</b>	630-800	Rabbit	Rabbit IgG	100µg	ELISA, WB	Hu, Ms, Rt	\$299.00
<b>Androgen Receptor (AR) (pS210)</b>	602-680	Rabbit	Rabbit IgG	100µg	ELISA, WB, IP	Hu, Ms, Rt	\$355.00
<b>AXL/UFO (Phospho)</b>	620-970	Rabbit	Rabbit IgG	100µg	ELISA, WB	Hu, Ms, Rt	\$365.00
<b>BCL-2 (pThr129)</b>	500-8874	Rabbit	Rabbit IgG	100µg	WB, IP	Hu, Ms, Rt	\$245.00
<b>BCL-2(pT56)</b>	500-11584	Rabbit	Rabbit IgG	100µg	IHC, ELISA	Hu, Ms	\$255.00
<b>BCL-2(pS70)</b>	500-11574	Rabbit	Rabbit IgG	100µg	IHC, ELISA	Hu, Ms	\$250.00
<b>CDC2 (pY15) (CDK1)</b>	602-160	Rabbit	Rabbit IgG	100µg	ELISA, WB, IP	Hu	\$315.00
<b>CDC25b(pS42)</b>	601-610	Rabbit	Rabbit IgG	100µg	Elisa, WB, IHC	Hu	\$375.00
<b>CDC25C(pS216)</b>	601-640	Rabbit	Rabbit IgG	100µg	Elisa, WB, IHC	Hu	\$345.00
<b>c-erbB2 (pY1221/Y1222) (HER2)</b>	500-11744	Rabbit	Rabbit IgG	100µg	IHC, ELISA	Hu, Ms	\$225.00
<b>c-erbB2 (pY877) (HER2)</b>	500-11754	Rabbit	Rabbit IgG	100µg	IHC, ELISA	Hu, Ms	\$225.00
<b>C-erbB3/HER3 (pY1283)</b>	602-520	Rabbit	Rabbit IgG	100µg	ELISA, WB, IP	Hu	\$330.00
<b>CK-18 (pS33)</b>	630-110	Rabbit	Rabbit IgG	100µg	ELISA, WB	Hu	\$345.00
<b>Crystallin(A-Beta) (pS59)</b>	630-400	Rabbit	Rabbit IgG	100µg	ELISA, WB	Hu, Ms, Rt	\$325.00
<b>CSF-1R (pY723)</b>	602-110	Rabbit	Rabbit IgG	100µg	ELISA, WB, IP	Hu, Ms, Rt	\$295.00
<b>DCLK1(pY30)</b>	630-620	Rabbit	Rabbit IgG	100µg	ELISA, WB	Hu, Ms, Rt	\$325.00
<b>Desmin (pT76/77)</b>	602-280	Rabbit	Rabbit IgG	100µg	ELISA, WB, IP	Hu, Ms, Rt	\$360.00
<b>EGFR(pY1092)</b>	500-12224	Rabbit	Rabbit IgG	100µg	IHC, ELISA	Hu, Ms, Rt	\$235.00
<b>ELK-1(pS383)</b>	500-12234	Rabbit	Rabbit IgG	100µg	IHC, IP ELISA	Hu, Ms, Rt	\$245.00
<b>ER (pS118)</b>	500-12264	Rabbit	Rabbit IgG	100µg	IHC, WB, ELISA	Hu, Ms	\$319.00
<b>GSK-3b (pY216)</b>	602-190	Rabbit	Rabbit IgG	100µg	ELISA, WB, IP	Hu, Ms, Rt	\$299.00
<b>IGF-1R (pY1161)</b>	500-12304	Rabbit	Rabbit IgG	100µg	IHC, ELISA	Hu, Ms, Rt	\$290.00
<b>IRAK4(pT345)</b>	600-560	Mouse	Mouse IgG1	100µg	WB, ELISA	Hu, Ms	\$230.00
<b>IRS-1 (pS312)</b>	500-8984	Rabbit	Rabbit IgG	100µg	WB, IP	Hu, Rt, Ms	\$295.00
<b>IRS1(pY612)</b>	601-600	Rabbit	Rabbit IgG	100µg	Elisa, WB, IHC	Hu, Rt, Ms	\$345.00
<b>IRS-2 (pS731)</b>	500-9004	Rabbit	Rabbit IgG	100µg	WB, IP	Hu, Rt, Ms	\$290.00
<b>JNK/SAPK1(pT183/pY185)</b>	600-380	Rabbit	Rabbit IgG	100µg	WB, ELISA, IP	Hu, Rt	\$340.00
<b>L1CAM(pS1152)</b>	630-210	Rabbit	Rabbit IgG	100µg	ELISA, WB, IHC	Hu, Rt, Ms	\$245.00
<b>LRP5 (phospho)</b>	601-010	Rabbit	Rabbit IgG	100µg	ELISA, WB	Hu/Rt/Ms	\$245.00
<b>LRP6 (phospho)</b>	601-060	Rabbit	Rabbit IgG	100µg	ELISA, WB	Hu/Rt/Ms	\$245.00
<b>LRRK2(pS1124)</b>	620-950	Rabbit	Rabbit IgG	100µg	ELISA, WB, IHC	Hu, Ms, Rt	\$355.00
<b>LRRK2(pS955)</b>	630-250	Rabbit	Rabbit IgG	100µg	ELISA, WB	Hu, Ms, Rt	\$325.00
<b>LRRK2(pS973)</b>	630-270	Rabbit	Rabbit IgG	100µg	ELISA, WB	Hu, Ms, Rt	\$325.00
<b>LRRK2(pT1491)</b>	630-040	Rabbit	Rabbit IgG	100µg	ELISA, WB	Hu, Ms, Rt	\$355.00
<b>LRRK2(pT1503)</b>	630-060	Rabbit	Rabbit IgG	100µg	ELISA, WB	Hu, Ms, Rt	\$325.00
<b>Neuropilin-1(pY297)</b>	630-570	Rabbit	Rabbit IgG	100µg	ELISA, WB	Hu, Ms	\$325.00
<b>Neuropilin-2(pY39)</b>	630-590	Rabbit	Rabbit IgG	100µg	ELISA, WB	Hu, Ms	\$325.00
<b>NFκBp65 (pS276)</b>	500-9064	Rabbit	Rabbit IgG	100µg	WB, IHC, ELISA	Hu, Ms, Rt	\$285.00
<b>NF-κB p65(pS536)</b>	500-11924	Rabbit	Rabbit IgG	100µg	IHC, ELISA, IP	Hu, Ms	\$270.00
<b>NF-κB p65(pT254)</b>	500-11934	Rabbit	Rabbit IgG	100µg	IHC, WB, ELISA	Hu, Ms	\$250.00
<b>Nucleophosmin (NPM) (pS70)</b>	630-540	Rabbit	Rabbit IgG	100µg	ELISA, WB	Hu, Ms, Rt	\$325.00
<b>PAK4(pS474)</b>	600-030	Rabbit	Rabbit IgG	100µg	WB, IP, ELISA	Hu, Ms, Rt	\$365.00
<b>Parkin (pS56)</b>	630-420	Rabbit	Rabbit IgG	100µg	ELISA, WB	Hu, Ms, Rt	\$325.00
<b>PINK1 (pT257)</b>	630-450	Rabbit	Rabbit IgG	100µg	ELISA, WB	Hu, Ms, Rt	\$325.00

Description	Catalogue	Host	Isotyping	Size	Application	Cross Reactivity	Price
<b>Raf-1 (pS259)</b>	500-12014	Rabbit	Rabbit IgG	100µg	IHC, ELISA	Hu, Ms	\$240.00
<b>Raf-A (pS186)</b>	630-390	Rabbit	Rabbit IgG	100µg	ELISA, WB	Hu, Ms, Rt	\$325.00
<b>Rel (pS503)</b>	500-12024	Rabbit	Rabbit IgG	100µg	IHC, ELISA	Hu, Ms	\$245.00
<b>Rho Kinase/ROCKII (pT396)</b>	500-9284	Rabbit	Rabbit IgG	100µg	WB	Hu, Ms, Rt	\$295.00
<b>SirT1(pS47)</b>	630-660	Rabbit	Rabbit IgG	100µg	ELISA, WB	Hu, Ms, Rt	\$325.00
<b>STAT3 (pY705)</b>	500-12054	Rabbit	Rabbit IgG	100µg	IHC, ELISA, IP	Hu, Ms	\$255.00
<b>STAT4(pY693)</b>	500-12064	Rabbit	Rabbit IgG	100µg	IHC, ELISA, IP	Hu, Ms	\$255.00
<b>STAT5 (pY694)</b>	500-9334	Rabbit	Rabbit IgG	100µg	WB, IP	Hu, Ms, Rt	\$255.00
<b>STAT5A (pS780)</b>	500-12074	Rabbit	Rabbit IgG	100µg	IHC, WB, ELISA	Hu, Ms	\$250.00
<b>STAT5A (pY694)</b>	500-12084	Rabbit	Rabbit IgG	100µg	IHC, WB, ELISA	Hu, Ms	\$225.00
<b>STAT6 (pT645)</b>	500-12094	Rabbit	Rabbit IgG	100µg	IHC, ELISA, IP	Hu, Ms	\$245.00
<b>STAT6 (pY641)</b>	500-12104	Rabbit	Rabbit IgG	100µg	IHC, ELISA, IP	Hu, Ms	\$245.00
<b>Synuclein Alpha (pS129)</b>	630-240	Rabbit	Rabbit IgG	100µg	ELISA, WB, IHC	Hu, Rt, Ms	\$299.00
<b>TGFBR1(Phospho)</b>	620-900	Rabbit	Rabbit IgG	100µg	ELISA, WB, IHC	hu, Ms, Rt	\$299.00
<b>TGFBR1(pS165)</b>	620-910	Rabbit	Rabbit IgG	100µg	ELISA, WB, IHC	hu, Ms, Rt	\$299.00
<b>VEGFR-2 (pY951) (CD309)</b>	602-080	Rabbit	Rabbit IgG	100µg	ELISA, WB, IP	Hu, Ms, Rt	\$299.00
<b>STK17b(pS11)</b>	630-350	Rabbit	Rabbit IgG	100µg	ELISA, WB, IP	Hu, Ms, Rt	\$245.00

## Custom Antibody Development Service

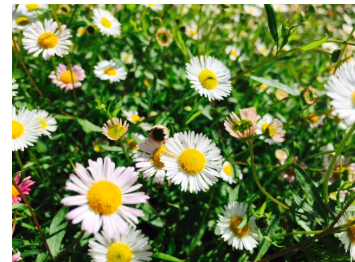


AbboMax also offers custom site-modification antibody services to our customers, including phosphorylation, methylation, citrullination, glycosylation, etc. We develop the highest and unparalleled standard of quality and high performance as its catalogue antibodies. Please contact us for the services.

AbboMax custom antibody development services are based on the same ability to routinely and successfully deliver antibodies of exceptional specificity and performance. Our in-depth scientific knowledge and our rigorous standards of immunoassay validation ensure optimal performance in applications specified by our services clients.

## Features and highlights

- Access to AbboMax proprietary site-directed modified antibody technology platform.
- Integrated cell and tissue-based high throughput screening.
- Start-to-finish service to deliver the final products with fully validation.
- A scientific collaboration ensures an understanding of your assay objectives and the delivery of antibodies that meet or exceed your expectations.





## Secondary Antibodies - Catalog



AbboMax offers secondary antibodies to researchers. All affinity-purified antibodies are isolated from antisera by immune-affinity chromatography. A proprietary, sequential elution and adsorption process are used to guarantee the specificity and high signal vs. low background. All unconjugated, affinity-purified antibodies are supplied as sterile liquids without stabilizer or preservatives except the conjugated, affinity-purified antibodies.

Description	Catalogue	Size	Host	Application	Price
Goat anti mouse IgG (H+L) (unconjugated)	511-010	500µg	Goat	ELISA, WB, IHC, IF	\$59
Goat anti mouse IgG (H+L) (unconjugated)	511-010-1	200µg	Goat	ELISA, WB, IHC, IF	\$40
Goat anti mouse IgG (H+L) (Biotinylated)	511-011	500µg	Goat	ELISA, WB, IHC, IF	\$69
Goat anti mouse IgG (H+L) (Biotinylated)	511-011-1	200µg	Goat	ELISA, WB, IHC, IF	\$45
Goat anti mouse IgG (H+L) (HRP-Linked)	511-012	500µg	Goat	ELISA, WB, IHC, IF	\$69
Goat anti mouse IgG (H+L) (HRP-Linked)	511-012-1	200µg	Goat	ELISA, WB, IHC, IF	\$42
Goat anti mouse IgG (H+L) (AP-linked)	511-013	500µg	Goat	ELISA, WB, IHC, IF	\$79
Goat anti mouse IgG (H+L) (AP-linked)	511-013-1	200µg	Goat	ELISA, WB, IHC, IF	\$49
Goat anti mouse IgG (H+L) (FITC-linked)	511-014	500µg	Goat	ELISA, WB, IHC, IF	\$129
Goat anti mouse IgG (H+L) (FITC-linked)	511-014-1	200µg	Goat	ELISA, WB, IHC, IF	\$89
Goat anti mouse IgG (H+L) (PE-linked)	511-015	500µg	Goat	ELISA, WB, IHC, IF	\$149
Goat anti mouse IgG (H+L) (PE-linked)	511-015-1	200µg	Goat	ELISA, WB, IHC, IF	\$149
Goat anti mouse IgG (H+L) (APC-linked)	511-016	500µg	Goat	ELISA, WB, IHC, IF	\$149
Goat anti mouse IgG (H+L) (APC-linked)	511-016-1	200µg	Goat	ELISA, WB, IHC, IF	\$149
Goat anti mouse IgG (H+L) (Cy5-linked)	511-017	500µg	Goat	ELISA, WB, IHC, IF	\$149
Goat anti mouse IgG (H+L) (Cy5-linked)	511-017-1	200µg	Goat	ELISA, WB, IHC, IF	\$149
Goat anti rabbit IgG (H+L) (unconjugated)	511-020	500µg	Goat	ELISA, WB, IHC, IF	\$59
Goat anti rabbit IgG (H+L) (unconjugated)	511-020-1	200µg	Goat	ELISA, WB, IHC, IF	\$59
Goat anti rabbit IgG (H+L) (Biotinylated)	511-021	500µg	Goat	ELISA, WB, IHC, IF	\$69
Goat anti rabbit IgG (H+L) (Biotinylated)	511-021-1	200µg	Goat	ELISA, WB, IHC, IF	\$69
Goat anti rabbit IgG (H+L) (HRP-Linked)	511-022	500µg	Goat	ELISA, WB, IHC, IF	\$69
Goat anti rabbit IgG (H+L) (HRP-Linked)	511-022-1	200µg	Goat	ELISA, WB, IHC, IF	\$69
Goat anti rabbit IgG (H+L) (AP-linked)	511-023	500µg	Goat	ELISA, WB, IHC, IF	\$79
Goat anti rabbit IgG (H+L) (AP-linked)	511-023-1	200µg	Goat	ELISA, WB, IHC, IF	\$79
Goat anti rabbit IgG (H+L) (FITC-linked)	511-024	500µg	Goat	ELISA, WB, IHC, IF	\$129
Goat anti rabbit IgG (H+L) (FITC-linked)	511-024-1	200µg	Goat	ELISA, WB, IHC, IF	\$89
Goat anti rabbit IgG (H+L) (PE-linked)	511-025	500µg	Goat	ELISA, WB, IHC, IF	\$149
Goat anti rabbit IgG (H+L) (PE-linked)	511-025-1	500µg	Goat	ELISA, WB, IHC, IF	\$95
Goat anti rabbit IgG (H+L) (APC-linked)	511-026	500µg	Goat	ELISA, WB, IHC, IF	\$149
Goat anti rabbit IgG (H+L) (APC-linked)	511-026-1	200µg	Goat	ELISA, WB, IHC, IF	\$95
Goat anti rabbit IgG (H+L) (Cy5-linked)	511-027	500µg	Goat	ELISA, WB, IHC, IF	\$149
Goat anti rabbit IgG (H+L) (Cy5-linked)	511-027-1	200µg	Goat	ELISA, WB, IHC, IF	\$95
Goat anti chicken IgY (H+L) (unconjugated)	511-030	500µg	Goat	ELISA, WB, IHC, IF	\$59
Goat anti chicken IgY (H+L) (unconjugated)	511-030-1	200µg	Goat	ELISA, WB, IHC, IF	\$59
Goat anti chicken IgY (H+L) (Biotinylated)	511-031	500µg	Goat	ELISA, WB, IHC, IF	\$69
Goat anti chicken IgY (H+L) (Biotinylated)	511-031-1	200µg	Goat	ELISA, WB, IHC, IF	\$69
Goat anti chicken IgY (H+L) (HRP-Linked)	511-032	500µg	Goat	ELISA, WB, IHC, IF	\$69
Goat anti chicken IgY (H+L) (HRP-Linked)	511-032-1	200µg	Goat	ELISA, WB, IHC, IF	\$69
Goat anti chicken IgY (H+L) (AP-linked)	511-033	500µg	Goat	ELISA, WB, IHC, IF	\$79
Goat anti chicken IgY (H+L) (AP-linked)	511-033-1	200µg	Goat	ELISA, WB, IHC, IF	\$79
Goat anti chicken IgY (H+L) (FITC-linked)	511-034	500µg	Goat	ELISA, WB, IHC, IF	\$129
Goat anti chicken IgY (H+L) (FITC-linked)	511-034-1	200µg	Goat	ELISA, WB, IHC, IF	\$89
Goat anti chicken IgY (H+L) (PE-linked)	511-035	500µg	Goat	ELISA, WB, IHC, IF	\$149
Goat anti chicken IgY (H+L) (PE-linked)	511-035-1	200µg	Goat	ELISA, WB, IHC, IF	\$95
Goat anti chicken IgY (H+L) (APC-linked)	511-036	500µg	Goat	ELISA, WB, IHC, IF	\$149
Goat anti chicken IgY (H+L) (APC-linked)	511-036-1	200µg	Goat	ELISA, WB, IHC, IF	\$95
Goat anti chicken IgY (H+L) (Cy5-linked)	511-037	500µg	Goat	ELISA, WB, IHC, IF	\$149

Description	Catalogue	Size	Host	Application	Price
Goat anti chicken IgY (H+L) (Cy5-linked)	511-037-1	200µg	Goat	ELISA, WB, IHC, IF	\$95
Rabbit anti Mouse IgG (H+L) (Unconjugated)	511-040	500µg	Rabbit	ELISA, WB, IHC, IF	\$59
Rabbit anti Mouse IgG (H+L) (Unconjugated)	511-040-1	200µg	Rabbit	ELISA, WB, IHC, IF	\$45
Rabbit anti mouse IgG (H+L) (Biotinylated)	511-041	500µg	Rabbit	ELISA, WB, IHC, IF	\$69
Rabbit anti mouse IgG (H+L) (Biotinylated)	511-041-1	200µg	Rabbit	ELISA, WB, IHC, IF	\$49
Rabbit anti mouse IgG (H+L) (HRP-Linked)	511-042	500µg	Rabbit	ELISA, WB, IHC, IF	\$69
Rabbit anti mouse IgG (H+L) (HRP-Linked)	511-042-1	200µg	Rabbit	ELISA, WB, IHC, IF	\$49
Rabbit anti mouse IgG (H+L) (AP-linked)	511-043	500µg	Rabbit	ELISA, WB, IHC, IF	\$79
Rabbit anti mouse IgG (H+L) (AP-linked)	511-043-1	200µg	Rabbit	ELISA, WB, IHC, IF	\$55
Rabbit anti mouse IgG (H+L) (FITC-linked)	511-044	500µg	Rabbit	ELISA, WB, IHC, IF	\$129
Rabbit anti mouse IgG (H+L) (FITC-linked)	511-044-1	200µg	Rabbit	ELISA, WB, IHC, IF	\$89
Rabbit anti mouse IgG (H+L) (PE-linked)	511-045	500µg	Rabbit	ELISA, WB, IHC, IF	\$149
Rabbit anti mouse IgG (H+L) (PE-linked)	511-045-1	200µg	Rabbit	ELISA, WB, IHC, IF	\$95
Rabbit anti mouse IgG (H+L) (APC-linked)	511-046	500µg	Rabbit	ELISA, WB, IHC, IF	\$149
Rabbit anti mouse IgG (H+L) (APC-linked)	511-046-1	200µg	Rabbit	ELISA, WB, IHC, IF	\$95
Rabbit anti mouse IgG (H+L) (Cy5-linked)	511-047	500µg	Rabbit	ELISA, WB, IHC, IF	\$149
Rabbit anti mouse IgG (H+L) (Cy5-linked)	511-047-1	200µg	Rabbit	ELISA, WB, IHC, IF	\$95
Rabbit anti chicken IgY (H+L) (unconjugated)	511-050	500µg	Rabbit	ELISA, WB, IHC, IF	\$59
Rabbit anti chicken IgY (H+L) (unconjugated)	511-050-1	200µg	Rabbit	ELISA, WB, IHC, IF	\$45
Rabbit anti chicken IgY (H+L) (Biotinylated)	511-051	500µg	Rabbit	ELISA, WB, IHC, IF	\$69
Rabbit anti chicken IgY (H+L) (Biotinylated)	511-051-1	200µg	Rabbit	ELISA, WB, IHC, IF	\$55
Rabbit anti chicken IgY (H+L) (HRP-Linked)	511-052	500µg	Rabbit	ELISA, WB, IHC, IF	\$69
Rabbit anti chicken IgY (H+L) (HRP-Linked)	511-052-1	200µg	Rabbit	ELISA, WB, IHC, IF	\$55
Rabbit anti chicken IgY (H+L) (AP-linked)	511-053	500µg	Rabbit	ELISA, WB, IHC, IF	\$79
Rabbit anti chicken IgY (H+L) (AP-linked)	511-053-1	200µg	Rabbit	ELISA, WB, IHC, IF	\$59
Rabbit anti chicken IgY (H+L) (FITC-linked)	511-054	500µg	Rabbit	ELISA, WB, IHC, IF	\$129
Rabbit anti chicken IgY (H+L) (FITC-linked)	511-054-1	200µg	Rabbit	ELISA, WB, IHC, IF	\$89
Rabbit anti chicken IgY (H+L) (PE-linked)	511-055	500µg	Rabbit	ELISA, WB, IHC, IF	\$149
Rabbit anti chicken IgY (H+L) (PE-linked)	511-055-1	200µg	Rabbit	ELISA, WB, IHC, IF	\$95
Rabbit anti chicken IgY (H+L) (APC-linked)	511-056	500µg	Rabbit	ELISA, WB, IHC, IF	\$149
Rabbit anti chicken IgY (H+L) (APC-linked)	511-056-1	200µg	Rabbit	ELISA, WB, IHC, IF	\$95
Rabbit anti chicken IgY (H+L) (Cy5-linked)	511-057	500µg	Rabbit	ELISA, WB, IHC, IF	\$149
Rabbit anti chicken IgY (H+L) (Cy5-linked)	511-057-1	200µg	Rabbit	ELISA, WB, IHC, IF	\$95
Rabbit anti goat IgG (H+L) (unconjugated)	511-060	500µg	Rabbit	ELISA, WB, IHC, IF	\$59
Rabbit anti goat IgG (H+L) (unconjugated)	511-060-1	200µg	Rabbit	ELISA, WB, IHC, IF	\$45
Rabbit anti goat IgG (H+L) (Biotinylated)	511-061	500µg	Rabbit	ELISA, WB, IHC, IF	\$69
Rabbit anti goat IgG (H+L) (Biotinylated)	511-061-1	200µg	Rabbit	ELISA, WB, IHC, IF	\$55
Rabbit anti goat IgG (H+L) (HRP-Linked)	511-062	500µg	Rabbit	ELISA, WB, IHC, IF	\$69
Rabbit anti goat IgG (H+L) (HRP-Linked)	511-062-1	200µg	Rabbit	ELISA, WB, IHC, IF	\$55
Rabbit anti goat IgG (H+L) (AP-linked)	511-063	500µg	Rabbit	ELISA, WB, IHC, IF	\$79
Rabbit anti goat IgG (H+L) (AP-linked)	511-063-1	200µg	Rabbit	ELISA, WB, IHC, IF	\$59
Rabbit anti goat IgG (H+L) (FITC-linked)	511-064	500µg	Rabbit	ELISA, WB, IHC, IF	\$129
Rabbit anti goat IgG (H+L) (FITC-linked)	511-064-1	200µg	Rabbit	ELISA, WB, IHC, IF	\$89
Rabbit anti goat IgG (H+L) (PE-linked)	511-065	500µg	Rabbit	ELISA, WB, IHC, IF	\$149
Rabbit anti goat IgG (H+L) (PE-linked)	511-065-1	200µg	Rabbit	ELISA, WB, IHC, IF	\$95
Rabbit anti goat IgG (H+L) (APC-linked)	511-066	500µg	Rabbit	ELISA, WB, IHC, IF	\$149
Rabbit anti goat IgG (H+L) (APC-linked)	511-066-1	200µg	Rabbit	ELISA, WB, IHC, IF	\$95
Rabbit anti goat IgG (H+L) (Cy5-linked)	511-067	500µg	Rabbit	ELISA, WB, IHC, IF	\$149
Rabbit anti goat IgG (H+L) (Cy5-linked)	511-067-1	200µg	Rabbit	ELISA, WB, IHC, IF	\$95
Goat anti Human IgG (H+L) (unconjugated)	511-070	500µg	Goat	ELISA, WB, IHC, IF	\$59
Goat anti Human IgG (H+L) (unconjugated)	511-070-1	200µg	Goat	ELISA, WB, IHC, IF	\$45
Goat anti Human IgG (H+L) (Biotin-linked)	511-071	500µg	Goat	ELISA, WB, IHC, IF	\$69
Goat anti Human IgG (H+L) (Biotin-linked)	511-071-1	200µg	Goat	ELISA, WB, IHC, IF	\$50
Goat anti Human IgG (H+L) (HRP-linked)	511-072	500µg	Goat	ELISA, WB, IHC, IF	\$69
Goat anti Human IgG (H+L) (HRP-linked)	511-072-1	200µg	Goat	ELISA, WB, IHC, IF	\$45
Goat anti Human IgG (H+L) (AP-linked)	511-073	500µg	Goat	ELISA, WB, IHC, IF	\$79
Goat anti Human IgG (H+L) (AP-linked)	511-073-1	200µg	Goat	ELISA, WB, IHC, IF	\$60

Description	Catalogue	Size	Host	Application	Price
Goat anti Human IgG (H+L) (FITC-linked)	511-074	500µg	Goat	ELISA, WB, IHC, IF	\$129
Goat anti Human IgG (H+L) (FITC-linked)	511-074-1	200µg	Goat	ELISA, WB, IHC, IF	\$89
Goat anti Human IgG (H+L) (PE-linked)	511-075	500µg	Goat	ELISA, WB, IHC, IF	\$149
Goat anti Human IgG (H+L) (PE-linked)	511-075-1	200µg	Goat	ELISA, WB, IHC, IF	\$95
Goat anti Human IgG (H+L) (APC-linked)	511-076	500µg	Goat	ELISA, WB, IHC, IF	\$149
Goat anti Human IgG (H+L) (APC-linked)	511-076-1	200µg	Goat	ELISA, WB, IHC, IF	\$95
Goat anti Human IgG (H+L) (Cy5-linked)	511-077	500µg	Goat	ELISA, WB, IHC, IF	\$149
Goat anti Human IgG (H+L) (Cy5-linked)	511-077-1	200µg	Goat	ELISA, WB, IHC, IF	\$95
Streptavidin (HRP-linked)	511-092	500µg		ELISA, WB, IHC, IF	\$149
Streptavidin (HRP-linked)	511-092-1	200µg		ELISA, WB, IHC, IF	\$95
Streptavidin (AP-linked)	511-093	500µg		ELISA, WB, IHC, IF	\$159
Streptavidin (AP-linked)	511-093-1	200µg		ELISA, WB, IHC, IF	\$105
Streptavidin (FITC-linked)	511-094	500µg		ELISA, WB, IHC, IF	\$179
Streptavidin (FITC-linked)	511-094-1	200µg		ELISA, WB, IHC, IF	\$125
Goat anti Rat IgG (H+L) (unconjugated)	511-110	500µg	Goat	ELISA, WB, IHC, IF	\$59
Goat anti Rat IgG (H+L) (unconjugated)	511-110-1	200µg	Goat	ELISA, WB, IHC, IF	\$40
Goat anti Rat IgG (H+L) (Biotin-linked)	511-111	500µg	Goat	ELISA, WB, IHC, IF	\$69
Goat anti Rat IgG (H+L) (Biotin-linked)	511-111-1	200µg	Goat	ELISA, WB, IHC, IF	\$49
Goat anti Rat IgG (H+L) (HRP-Linked)	511-112	500µg	Goat	ELISA, WB, IHC, IF	\$69
Goat anti Rat IgG (H+L) (HRP-Linked)	511-112-1	200µg	Goat	ELISA, WB, IHC, IF	\$49
Goat anti Rat IgG (H+L) (AP-linked)	511-113	500µg	Goat	ELISA, WB, IHC, IF	\$79
Goat anti Rat IgG (H+L) (AP-linked)	511-113-1	200µg	Goat	ELISA, WB, IHC, IF	\$49
Goat anti Rat IgG (H+L) (FITC-linked)	511-114	500µg	Goat	ELISA, WB, IHC, IF	\$129
Goat anti Rat IgG (H+L) (FITC-linked)	511-114-1	200µg	Goat	ELISA, WB, IHC, IF	\$89
Goat anti Rat IgG (H+L) (PE-linked)	511-115	500µg	Goat	ELISA, WB, IHC, IF	\$149
Goat anti Rat IgG (H+L) (PE-linked)	511-115-1	200µg	Goat	ELISA, WB, IHC, IF	\$105
Goat anti Rat IgG (H+L) (APC-linked)	511-116	500µg	Goat	ELISA, WB, IHC, IF	\$149
Goat anti Rat IgG (H+L) (APC-linked)	511-116-1	200µg	Goat	ELISA, WB, IHC, IF	\$105
Goat anti Rat IgG (H+L) (Cy5-linked)	511-117	500µg	Goat	ELISA, WB, IHC, IF	\$149
Goat anti Rat IgG (H+L) (Cy5-linked)	511-117-1	200µg	Goat	ELISA, WB, IHC, IF	\$105



## General Information

AbboMax scientific professionals have been involved in researching, developing and manufacturing high performance immunoassays reagents for many years. We are delivering high quality products to scientists in the life science field. We are the trusted and dependable supplier to many of the international leading research institutes and clinical diagnostic companies. With original manufacturing of more than 90% of our products at our own Silicon Valley Core Facility, we are able to provide bulk quantities of most of our products at an economical price. Please contact us for bulk price quote.

### Contact Information:

#### AbboMax, Inc

2528 Qume Drive, Suite 8

San Jose, California, 95131. USA

Tel: 408-573-1898

Toll Free: 1-866-628-9898 (USA)

Fax: 408-573-1858

Email: [info@abbomax.com](mailto:info@abbomax.com)

Website: [www.abbomax.com](http://www.abbomax.com)

### Order Information

Please place order by phone, fax, email or website

### Shipping:

All shipping and handling charges are prepaid by AbboMax and added to the invoice along with the shipment. If you would like to use your own carrier, please supply the account number when the order is placed. Orders are taken before 12:00PM (Pacific Time) can be shipped same day for the next day delivery domestically. All international orders will be shipped international priority using FedEx.



### Product Warranty:

AbboMax Inc. warrants its services and products to original purchaser against defects in material and workmanship under normal use and application for a period of one year from date of purchase. AbboMax sole obligation under this warranty shall be to replace defective products that do not perform to our stated specifications. In no case shall AbboMax be liable for incidental or consequential damages. This warranty applies only to products in the original container that have been handled and stored in accordance with AbboMax recommendations. This warranty is in lieu of all other warranties, express or implied, including warranties of merchantability and fitness for a particular purpose.

### Collaborating Partnership Opportunities:

AbboMax Inc. is always interested in discovering innovative technology that will be useful to our customers. If you are a researcher and have new technology or good idea, please contact us. We would love to translate your innovation and discoveries to a successful commercialization. Please contact us at [info@abbomax.com](mailto:info@abbomax.com)