



Mouse anti AID Monoclonal Antibody

Alternative Name(s): AID

Order Information

- **Description:** AID
- **Catalogue:** 604-040
- **Lot:** See label
- **Size:** 100ug/200ul
- **Host:** Mouse
- **Clone:** ZY201
- **Application:** IHC(P), WB
- **Reactivity:** Hu

ANTIGEN PREPARATION

A recombinant protein of full length human AID.

BACKGROUND

AID, also known as Activation-induced cytidine deaminase, an RNA-editing deaminase, is a 24 kDa enzyme that is a member of the cytidine deaminase family. The protein is involved in somatic hypermutation, gene conversion (in chickens, pigs, etc.), and class-switch recombination of immunoglobulin genes. It creates mutations in DNA by deamination of cytosine base, which turns it into uracil which is recognized as a thymine. AID plays a critical role during B cell development. Protein is normally expressed in germinal center B cells, its forced expression in B cells at the wrong stage of differentiation, in non-B cells, and in Escherichia coli results in enhanced mutagenesis and mutational spectra mimicking somatic hypermutation (SHM). Defects in this gene are the cause of autosomal recessive hyper-IgM immunodeficiency syndrome type 2 (HIGM2). Overexpression correlates with poor prognosis in chronic lymphocytic leukemia and lymphoma

PURIFICATION

The mouse IgG is purified by Protein A-Affinity Chromatography according to Isotyping

FORMULATION

This affinity purified antibody is supplied in sterile Phosphatebuffered saline (pH7.2) containing antibody stabilizer

SPECIFICITY

This antibody recognizes human AID protein. The other species are not tested.

STORAGE

The antibodies are stable for 24 months from date of receipt when stored at -20°C to -70°C . The antibodies can be stored at 2°C - 8°C for three month without detectable loss of activity. Avoid repeated freezing-thawing cycles.

APPLICATIONS/SUGGESTED WORKING DILUTIONS*

- Western Blot: 0.1-1 $\mu\text{g/ml}$
- ELISA: 0.01-0.1 $\mu\text{g/ml}$
- Immunoprecipitation: 2-5 $\mu\text{g/ml}$
- IHC: 2-10 $\mu\text{g/ml}$
- Flow cytometry: Not tested
- Molecular Weight: 22.0
- Positive Control: Kidney Tissue
- Cellular Location: Cell Membrane

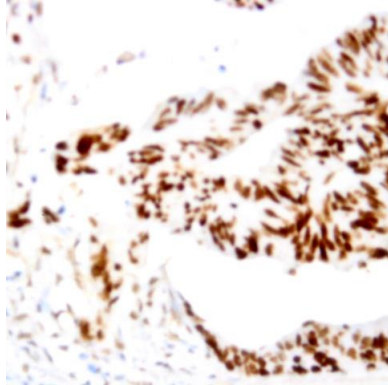
*Optimal dilutions should be determined by researchers for the specific applications.

FOR RESEARCH USE ONLY.

AbboMax, Inc 2528 Qume Drive, Suite 8, San Jose, California 95131, USA
1 408-573-1898 (Tel). 1 408-573-1858 (Fax). www.abbomax.com info@abbomax.com



DATA ATTACHMENTS



Immunohistochemistry: Human colon carcinoma (FFPE) stained with Mouse anti-AID antibody (Cat# 604-040) at 1:200 for 10 min @ RT. Staining of formalin-fixed tissue requires boiling tissue sections in 10 mM Citrate Buffer, pH 6.0 for 10 min followed by cooling at RT for 20 min.

REFERENCES

FOR RESEARCH USE ONLY.

AbboMax, Inc 2528 Qume Drive, Suite 8, San Jose, California 95131, USA
1 408-573-1898 (Tel). 1 408-573-1858 (Fax). www.abbomax.com info@abbomax.com