



Rabbit anti 15-Lox-1 Polyclonal Antibody

Alternative Name(s): 15-Lipoxygenase 1

Order Information

- **Description:** 15-Lox-1
- **Catalogue:** 600-580
- **Lot:** See label
- **Size:** 100ug/200ul
- **Host:** Rabbit
- **Clone:** nan
- **Application:** IHC(P), WB
- **Reactivity:** Hu, Ms, Rt

ANTIGEN PREPARATION

A synthetic peptide of PY EYL RPS VVE NSV AI corresponding to the internal portion of human LOX1 protein sequence. It is identical among human, rat and mice.

BACKGROUND

Lipoxygenases constitute a family of enzymes which are implicated in a variety of inflammatory disorders including asthma. The 15-lipoxygenase has been identified as the major route of arachidonic acid metabolism in human lung, airway epithelial cells, eosinophils, and developing red cells, the localization of the enzyme within lung has not been clearly defined. The different isoforms of 15-lipoxygenase exist in different tissues in basal and ciliated cells of the trachea, bronchi and bronchioles of lungs. The 15-lipoxygenase of human lung is identical to that of the reticulocyte enzyme and is preferentially expressed in airway epithelium.

PURIFICATION

The Rabbit IgG is purified by Epitope Affinity Purification

FORMULATION

This affinity purified antibody is supplied in sterile Phosphatebuffered saline (pH7.2) containing antibody stabilizer

SPECIFICITY

This antibody recognizes 15-Lox-1 protein. It reacts to human, mice and rat.

STORAGE

The antibodies are stable for 24 months from date of receipt when stored at -20°C to -70°C . The antibodies can be stored at 2°C - 8°C for three month without detectable loss of activity. Avoid repeated freezing-thawing cycles.

APPLICATIONS/SUGGESTED WORKING DILUTIONS*

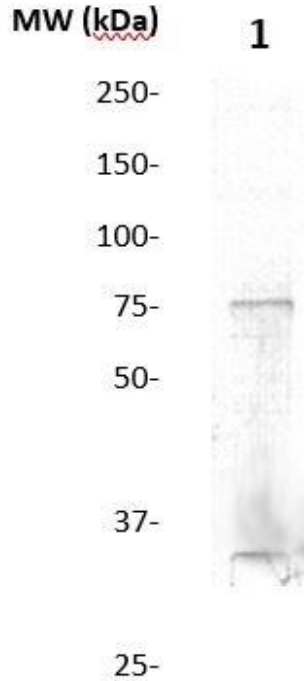
- Western Blot: 0.1-1 $\mu\text{g/ml}$
- ELISA: 0.01-0.1 $\mu\text{g/ml}$
- Immunoprecipitation: 2-5 $\mu\text{g/ml}$
- IHC: 2-10 $\mu\text{g/ml}$
- Flow cytometry: Not tested
- Molecular Weight: 75.0
- Positive Control: Kidney Tissue
- Cellular Location: Cell Membrane

*Optimal dilutions should be determined by researchers for the specific applications.

FOR RESEARCH USE ONLY.

AbboMax, Inc 2528 Qume Drive, Suite 8, San Jose, California 95131, USA
1 408-573-1898 (Tel). 1 408-573-1858 (Fax). www.abbomax.com info@abbomax.com

DATA ATTACHMENTS



Western Blot: The whole lysate derived from HT29 (20 ug/lane) immunoblotted by Rabbit anti – 15-LOX-1 (Cat# 600-580) at 1:500. Observed a major immunoreactive band at molecular weight ~75kDa.

REFERENCES

FOR RESEARCH USE ONLY.