



Rabbit anti AKT1/PKBa(pS473) Polyclonal Antibody

Alternative Name(s): v-akt murine thymoma viral oncogene homolog 1; AKT, PKB, PKB-ALPHA, PRKBA, RAC, RAC-ALPHA

Order Information

- **Description:** AKT1/PKBa(pS473)
- **Catalogue:** 600-220
- **Lot:** See label
- **Size:** 100ug/200ul
- **Host:** Rabbit
- **Clone:** nan
- **Application:** IHC(P), WB
- **Reactivity:** Hu, Ms, Rt

ANTIGEN PREPARATION

A synthetic peptide corresponding to the close to C-term of human AKT1 protein.

BACKGROUND

Akt [also known as PKB (Protein kinase B) is a family of serine/threonine kinases that plays an important role in signal transduction. There are three known isoforms of Akt in mammalian cells [Akt1 (α), Akt2 (β) and Akt3 (γ)]; Akt is activated by insulin and growth and survival factors. Akt1 is phosphorylated within the activation loop at threonine 308 and the C-terminus at serine 473 (S473). Additionally, Akt has been referred to as an oncogene because it has increased activity in a number of tumors.

PURIFICATION

The Rabbit IgG is purified by site-modified Epitope Affinity Purification.

FORMULATION

This affinity purified antibody is supplied in sterile Tris-buffered saline (pH7.2) containing antibody stabilizer

SPECIFICITY

The motif corresponding to the major autophosphorylation site of the human AKT1 kinase protein. This antibody does not cross react to the non-phosphorylated AKT1 or with other unrelated phosphorylated serine. Ser473 corresponds to QFSYS in human, rat, mouse, chicken and canis of AKT/PKB proteins

STORAGE

The antibodies are stable for 24 months from date of receipt when stored at -20°C to -70°C . The antibodies can be stored at 2°C - 8°C for three month without detectable loss of activity. Avoid repeated freezing-thawing cycles.

APPLICATIONS/SUGGESTED WORKING DILUTIONS*

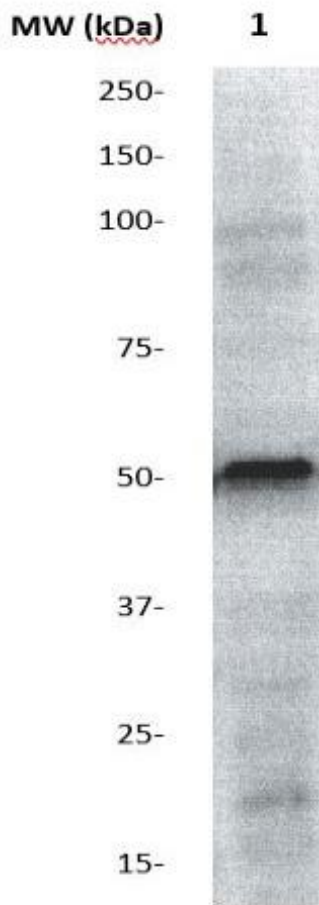
- Western Blot: 0.1-1 $\mu\text{g/ml}$
- ELISA: 0.01-0.1 $\mu\text{g/ml}$
- Immunoprecipitation: 2-5 $\mu\text{g/ml}$
- IHC: 2-10 $\mu\text{g/ml}$
- Flow cytometry: Not tested
- Molecular Weight: 65.0
- Positive Control: Kidney Tissue
- Cellular Location: Cell Membrane

*Optimal dilutions should be determined by researchers for the specific applications.

FOR RESEARCH USE ONLY.

AbboMax, Inc 2528 Qume Drive, Suite 8, San Jose, California 95131, USA
1 408-573-1898 (Tel). 1 408-573-1858 (Fax). www.abbomax.com info@abbomax.com

DATA ATTACHMENTS



Western Blot: The whole celllysate derived from PDGF stimulated 3T3 was immunoprobed by Rabbit anti-AKT1(pS473) (Cat#600-220) at 1:1000. An immunoreactive band was observed around ~60 kDa.

REFERENCES

FOR RESEARCH USE ONLY.