



## Rabbit anti Actin-beta Polyclonal Antibody

Alternative Name(s): ACTB

### Order Information

- **Description:** Actin-beta
- **Catalogue:** 500-4554
- **Lot:** See label
- **Size:** 100ug/200ul
- **Host:** Rabbit
- **Clone:** nan
- **Application:** IHC(P), WB
- **Reactivity:** Hu

### **ANTIGEN PREPARATION**

A synthetic peptide corresponding to N-term of human beta-Actin protein. This sequence is identical in human, mouse, rat, bovine and chicken.

### **BACKGROUND**

The two major cytoskeletal proteins implicated in cell motility are actin and myosin. There are three  $\alpha$ -actin (skeletal, cardiac, and smooth muscle), one  $\beta$ -actin ( $\beta$  non-muscle), and two  $\gamma$ -actins ( $\gamma$ -smooth muscle and  $\gamma$ -non-muscle). Antibody to  $\beta$ -actin provides a specific and useful tool in studying the intracellular distribution of  $\beta$ -actin and the static and dynamic aspects of the cytoskeleton. Actins are highly conserved proteins that are involved in cell motility, structure, and integrity. This beta-actin is a major constituent of the contractile apparatus and one of the two non-muscle cytoskeletal actins.

### **PURIFICATION**

The Rabbit IgG is purified by Epitope Affinity Purification

### **FORMULATION**

This affinity purified antibody is supplied in sterile Phosphatebuffered saline (pH7.2) containing antibody stabilizer

### **SPECIFICITY**

This antibody recognizes actin protein. It cross-reacts to human, mouse, rat, chicken, bovine etc.

### **STORAGE**

The antibodies are stable for 24 months from date of receipt when stored at  $-20^{\circ}\text{C}$  to  $-70^{\circ}\text{C}$ . The antibodies can be stored at  $2^{\circ}\text{C}$ - $8^{\circ}\text{C}$  for three month without detectable loss of activity. Avoid repeated freezing-thawing cycles.

### **APPLICATIONS/SUGGESTED WORKING DILUTIONS\***

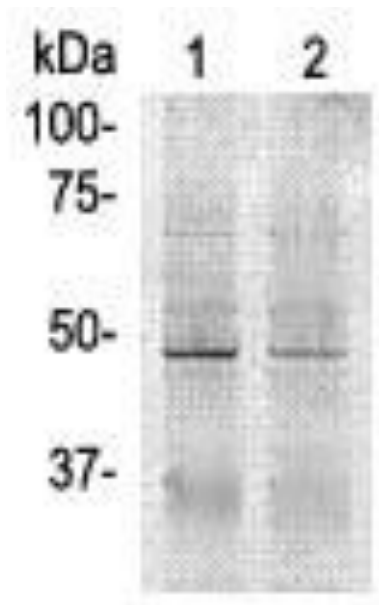
- Western Blot: 0.1-1  $\mu\text{g/ml}$
- ELISA: 0.01-0.1  $\mu\text{g/ml}$
- Immunoprecipitation: 2-5  $\mu\text{g/ml}$
- IHC: 2-10  $\mu\text{g/ml}$
- Flow cytometry: Not tested
- Molecular Weight: 42.0
- Positive Control: Kidney Tissue
- Cellular Location: Cell Membrane

\*Optimal dilutions should be determined by researchers for the specific applications.

### **FOR RESEARCH USE ONLY.**

AbboMax, Inc 2528 Qume Drive, Suite 8, San Jose, California 95131, USA  
1 408-573-1898 (Tel). 1 408-573-1858 (Fax). [www.abbomax.com](http://www.abbomax.com) [info@abbomax.com](mailto:info@abbomax.com)

**DATA ATTACHMENTS**



Western Blot: Cell lysate from A431 (lane1) and HEK293 (Lane 2) was resolved onto 12% SDS-PAGE and transferred onto NC Membrane, then probed by Anti-beta-Actin antibody, (Cat# 500-4554) at 1:500. An immune-reactive band around 42-kDa is observed.

**REFERENCES**

**FOR RESEARCH USE ONLY.**